

# Hunters Wood, the Hooke and Great Home Wood

A lovely, varied, circular walk to the north east of Plumpton Green, starting and finishing at the village hall. Passing through woods and over open pastures, it uses well marked paths and few roads, with no steep inclines.

FOOTPATH  
TO PLUMPTON



PLUMPTON

This leaflet is one of 16 produced by the Plumpton Village Action Plan Footpaths Team. Copies can be downloaded free from [www.plumptonvap.co.uk](http://www.plumptonvap.co.uk)

Plumpton parish includes the villages of Plumpton and Plumpton Green. The parish lies at the foot of the South Downs, near Brighton and Lewes, in East Sussex. The southern part of the parish is within the South Downs National Park.

## Public transport

Plumpton is served by two bus services (166 and 824, Monday to Saturday) and a frequent train service (London Victoria to Eastbourne, Hastings and Ore, daily including Sundays). There is also a daily train service from Brighton via Lewes.

For information about bus times telephone **0844 477 1623** or visit [www.countryliner-coaches.co.uk](http://www.countryliner-coaches.co.uk) For train times telephone **0845 127 2920** or visit [www.southernrailway.com](http://www.southernrailway.com)

## Pubs and shop

Plumpton has four pubs: the Half Moon at the south end of the village, beneath the Downs; the Winning Post and Fountain Inn, both in the centre of the village, and the Plough, at the north end of the village. There is also a pub, the Jolly Sportsman, in East Chilmington. The Plumpton village shop is open daily and has a delicatessen.

## Please follow the Countryside Code

- Be safe, plan ahead and follow any signs
- Leave gates and property as you find them
- Protect plants and animals and take your litter home
- Keep dogs under close control
- Consider other people



OS map: Reproduced by permission of Ordnance Survey on behalf of HMSO © Crown copyright 2010. All rights reserved. Ordnance Survey licence number 100022021

With thanks to all those who contributed to these leaflets. In particular, thanks to the Plumpton Footpaths Society, who showed us the way; the Plumpton Wildlife & Habitat Group for their commentaries; Kate Gold, for walks and photos; Bob Doran, for photos, and Lyndsey Smith for her lovely wildlife illustrations. This walk was correct at June 2010. Any comments and subsequent corrections should be emailed to [footpaths@plumptonvap.co.uk](mailto:footpaths@plumptonvap.co.uk). Walkers should take due care when following this walk and do so at their own risk. No liability is accepted by the authors, the Village Action Plan Footpath Team or any other party.

Designed by Phipps Design  
[www.phippsdesign.co.uk](http://www.phippsdesign.co.uk)

Printed by Quentin Press Ltd on FSC certified paper using alcohol-free printing presses and vegetable-based inks.  
[www.quentinpress.co.uk](http://www.quentinpress.co.uk)



19

Cross this stile and continue through the hedgerow/ small wood to the next stile, leading to an open field. Keep straight on, with the hedge to your left, until you reach a stile leading into Beresford Lane.

20

Turn left here and follow the road for a short distance, passing Elm Cottage and Lombards on your left. Immediately after Lombards, opposite the driveway to Old Gurr's Farm, take the footpath up to the left.

21

Follow this path leading first into Polecat Wood, then into Great Home Wood, which stretches away to your left. Ignoring a fingerpost to the right, the path becomes a wider bridleway passing through the wood crossing three wide plank bridges at intervals along the way. Eventually the path crosses a large wooden bridge and emerges into South Road. This is a busy section of South Road, so be aware of traffic.

22

Turn right up South Road and continue for a short distance, passing a house on your right. Very shortly after, cross a stile in the hedgerow leading into a field on your left.



23

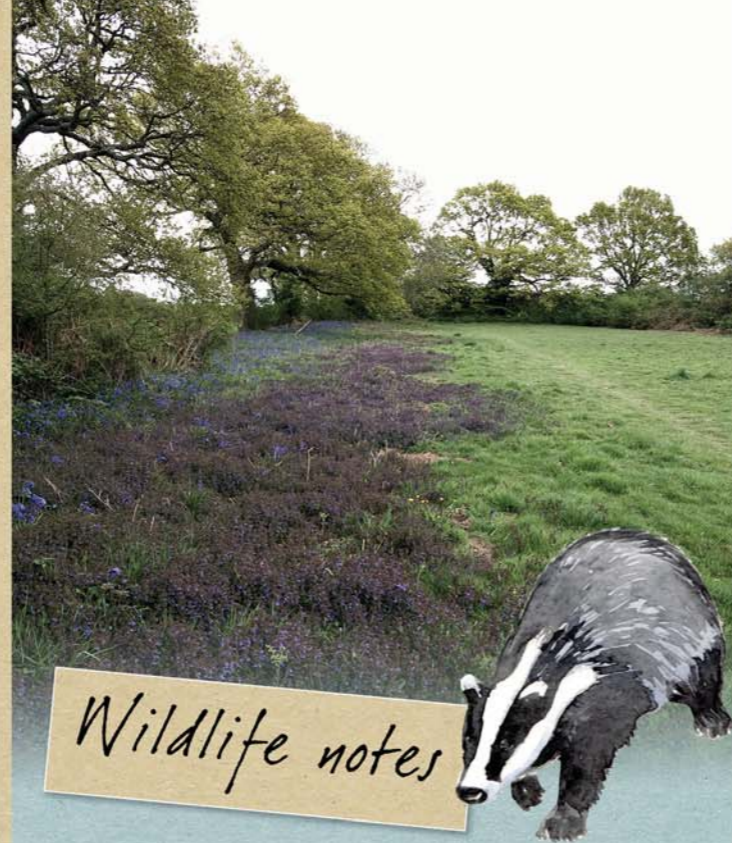
With the hedge on your left, head towards an open gate straight ahead. There are no waymarkers in this section, but at the open gateway you will see two further open gateways ahead, across the next field. Head towards the one on your left, following the faintly marked footpath. At this next gateway, follow the hedge around to the right, towards a metal gate in the far right corner of the field.

24

Pass through the metal gate and turn right towards the clump of four poplars in the corner of a private garden. Follow the hedge along the edge of the garden for a short distance up to a stile leading into Station Road, just north of Lentrige Farm.

25

At Station Road, turn left and follow the road back down into the village, passing the Fountain Inn on your right and All Saints Church on your left, to return to the village hall.



## Wildlife notes

*In cold periods of winter the fields between Strawlands and Novington Lane (points 4 to 6) can provide feeding grounds for flocks of lapwings and sometimes golden plover, or flocks of thrushes or skylarks.*

*The track at point 12 is part of an old drove road that passed down through Hurst Barn and Warningore Woods and on to the Downs.*

*From point 15 the route takes you through a rich diversity of habitats, with old tree-lined tracks, woodland patches and a range of pasture and meadow. An incredibly detailed history of the land belonging to the Hooke Estate exists in the County Archives.*

*Polecat Wood (to the west at point 21) and Great Home Wood (to the east) are registered ancient woodland and have an impressive display of bluebells in spring. Great Home Wood has a diverse structure, even including a rather out of place coniferous plantation.*





Map: OS Explorer 122  
START: TQ 362166

## The route

**1** Leave the village hall car park and return to Station Road. With the village hall behind you, turn left up Station Road.



**2** Pass All Saints Church on your right, and then the turning to Wells Close. Take the next right turning off Station Road into an unmade, unmarked road (known as Strawlands), marked by a small concrete footpath sign.



**3** Follow the track past houses on your left until it turns into a footpath leading past some garages on your left with a post and wire fence on your right. Pass over a plank bridge, through a small wood and into a field.



**4** Continue on the path along the edge of this field with the hedge on your left, over a ditch via a stile and onto a farm track beside a large field.

**5** Continue in the same direction along this track for some way with the hedge now on your right, ignoring a turning to your right down to North Barnes Farm where the track meets the hedgerow.

**6** The footpath continues straight ahead in an easterly direction still following the hedgerow on your right until you reach Novington Lane, through a squeeze stile and over a plank bridge.

**7** Turn right and walk along the road. Pass a brick farm building on the left and a bungalow and a house on your right, and a large white house set back from the road on your left. You then come to a house on your right. Immediately opposite this house take the footpath on your left, passing through a gate and into a field.

**8** Follow the fence on your left and continue in an easterly direction along the edge of this field to the next hedgerow, where the path curves through the hedge and emerges into a cultivated field. The footpath crosses this field diagonally north east, towards the corner of Hunters Wood opposite – although crops may obscure the route.

**9** On reaching the corner of the wood, continue along its edge, following the path, heading roughly north east to a stile, then through a short hedgerow over another stile and into a grass field.

**10** Keep to the edge of this pasture, following the edge of the wood on your left. Where the wood swings round to the left, follow the direction of the fingerpost and turn right across the pasture to another stile, near to a metal cattle trough.



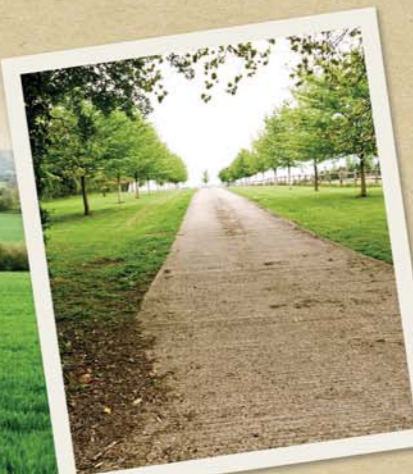
**11** Go over this stile, turn left up the grass farm track between two hedges and cross over a stile beside a metal gate onto the concrete drive leading to Drapers Farm on your left.

**12** Turn right here, following the concrete drive. Ignoring the entrance to Yokehurst Place immediately on your left, and two other marked footpaths straight ahead and to your right, follow the concrete drive round to the left, continuing along it until you reach Honeypot Lane, by the South Chailey Surgery on your right.

**13** Turn right and follow the pavement along Honeypot Lane until the road bends sharply to your right, at the far end of Chailey School buildings on your right.

**14** Take the farm track on your left, towards Broomfield Farm, marked by a sign for Broomfield Farm Cottage. Where the track forks, take the track to the right leading towards and into a wood.

**15** Continue to follow the track through the wood until you emerge on the other side, with a half timbered house on your left. Continue to follow the main track until the path forks left, with a private drive leading right to the Hooke. Take the left fork, which passes around the house and stable yard, before swinging to the left, with a large pond on your left and the remains of a brick walled garden.



**16** The track continues left, marked by a fingerpost, through a small wood for some distance, and ends at a gateway leading to a cultivated field. Ignore a path to the right and proceed through the gateway. Head for a dilapidated bridge immediately opposite you. Do not attempt to cross the bridge, but turn left at the bridge and follow the stream. Turn right where the footpath crosses the stream and continue up the left side of a hedge, immediately in front of you.

**17** Follow the hedge to a stile leading into Popjoy Wood and follow the path straight ahead through the wood, over a stile into an open field and straight ahead along a faintly marked footpath towards the stile directly ahead on the far side of the field.

**18** Cross this stile, ignoring the track running left and right. Keeping close to the edge of Toll Wood on your right, continue on in the same direction through the field. You will shortly reach another stile.