

21

Turn right up Beresford Lane and take the bridleway to the left immediately after the house on the left, opposite the driveway to Old Gurr's Farm.

22

Follow this path first into Polecat Wood, then into Great Home Wood. Continue through the wood, crossing three wide plank bridges at intervals along the way. Eventually the path crosses a large wooden bridge and emerges into South Road. This is a busy section of South Road, so be aware of traffic.

23

Turn right up South Road and continue for about 170 yards to a stile in the hedgerow on the opposite (left) side of the road, just after a house on your right.

24

Cross the stile into the field and, keeping the hedge on your left, head towards a gateway straight ahead. There are no waymarkers in this section, but at the open gateway you will see two more open gateways ahead, on the far side of the next field. Head towards the one on the left. Go through this gateway and follow the hedge on your right, past a large oak tree, to a field gate in the corner of the field ahead.

25

Go through the gate and continue diagonally right towards a clump of four poplars in the corner of a garden ahead. Follow the hedge along the edge of the garden for a short distance to a stile leading into Station Road, where you emerge just north of Lentrige Farm.

26

On Station Road, turn left and follow the road back down into the village, passing the Fountain inn on your right and All Saints Church on your left, to return to the village hall.

Wildlife notes



The wood to the right of the bridleway at point 5 is carpeted with bluebells in spring and there are wood anemones too. Look out for tree creepers and green woodpeckers. The track is an old drove road from the Downs to pastures in the Weald.

As you approach the cross roads at point 10, the path you come to is the parish boundary. Look to your left (south) and you will see a very old gnarled oak. This is an old boundary marker tree. Other boundary marker trees occur along the stretch you travel to the north, but are not so distinctive.

The last field before the road at point 12 is quite rich in flowers.

Look out for buzzards at point 14.

At points 17/18 is an area of small patches of old woodland, broad shaws and meadows. The woods and shaws are good for spring flowers up until bluebell time. The fields are varied, some being very wet and marshy, and many very flower-rich. The final broad shaw runs alongside the Longford Stream. Stop here for a chance to see kingfisher or grey wagtail, or even trout or water shrew.

Polecat Wood (point 22) and Great Home Wood are registered ancient woodland and have an impressive display of bluebells in spring. Great Home Wood has a diverse structure, including a rather out of place coniferous plantation.

This leaflet is one of 16 produced by the Plumpton Village Action Plan Footpaths Team. Copies can be downloaded free from www.plumptonvap.co.uk

Plumpton parish includes the villages of Plumpton and Plumpton Green. The parish lies at the foot of the South Downs, near Brighton and Lewes, in East Sussex. The southern part of the parish is within the South Downs National Park.

Public transport

Plumpton is served by two bus services (166 and 824, Monday to Saturday) and a frequent train service (London Victoria to Eastbourne, Hastings and Ore, daily including Sundays). There is also a daily train service from Brighton via Lewes.

For information about bus times telephone 0844 477 1623 or visit www.countryliner-coaches.co.uk For train times telephone 0845 127 2920 or visit www.southernrailway.com

Pubs and shop

Plumpton has four pubs: the Half Moon at the south end of the village, beneath the Downs; the Winning Post and Fountain Inn, both in the centre of the village, and the Plough, at the north end of the village. There is also a pub, the Jolly Sportsman, in East Chiltington. The Plumpton village shop is open daily and has a delicatessen.

Please follow the Countryside Code

- Be safe, plan ahead and follow any signs
- Leave gates and property as you find them
- Protect plants and animals and take your litter home
- Keep dogs under close control
- Consider other people



OS map: Reproduced by permission of Ordnance Survey on behalf of HMSO © Crown copyright 2010. All rights reserved. Ordnance Survey licence number 100022021

With thanks to all those who contributed to these leaflets. In particular, thanks to the Plumpton Footpaths Society, who showed us the way; the Plumpton Wildlife & Habitat Group for their commentaries; Kate Gold, for walks and photos; Bob Doran, for photos, and Lyndsey Smith for her lovely wildlife illustrations. This walk was correct at June 2010. Any comments and subsequent corrections should be emailed to footpaths@plumptonvap.co.uk. Walkers should take due care when following this walk and do so at their own risk. No liability is accepted by the authors, the Village Action Plan Footpath Team or any other party.

Designed by Phipps Design
www.phippsdesign.co.uk

Printed by Quentin Press Ltd on FSC certified paper using alcohol-free printing presses and vegetable-based inks.
www.quentinpress.co.uk



St Helena Lane, Wivelsfield Green and the Hospice

A circular walk to the north of Plumpton Green, starting and finishing at the village hall. Passing near the Plough inn and St Peter and St James Hospice at Wivelsfield Green, it returns via Great Home Wood and is a rich and varied walk, mostly across fields, with a few stretches along roads.

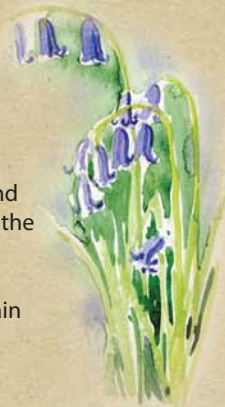
FOOTPATH
TO PLUMPTON

PLUMPTON





The route



1 Leave the village hall car park and return to Station Road. Turn left and head north, past the church on your right, until you reach the Fountain inn on your left.

5 Cross this stile into a wood, where the footpath joins a bridleway. Turn right, heading north, and continue along the bridleway as it passes through the wood and eventually turns into a hardcore track, passing a bungalow on your left.

4 Pass through the hedgerow and continue to follow the hedgerow on your right towards a stile at the far side of the next field.

3 Continue straight ahead to a set of double stiles with a plank bridge between. Cross these, and head diagonally right across the field towards the gap in the hedge in the far right corner.

2 Immediately after the Fountain Inn car park, take the marked footpath on your left and follow it to a high stile. Cross this stile into the field.

8 Follow the private driveway (it is a right of way) across the front of the cottage on your right. The route turns sharply to the right immediately after the cottage and is marked by a waymark on the gate in front of you. Continue round to the left, and on over a plank bridge.

7 Turn left along the footpath, into the driveway of Challoners (do not take the entrance into Plumpton Green Studios, signed ahead along the road).

6 When the track joins the road, turn right and follow the road for a short distance to a point where a footpath crosses the road.



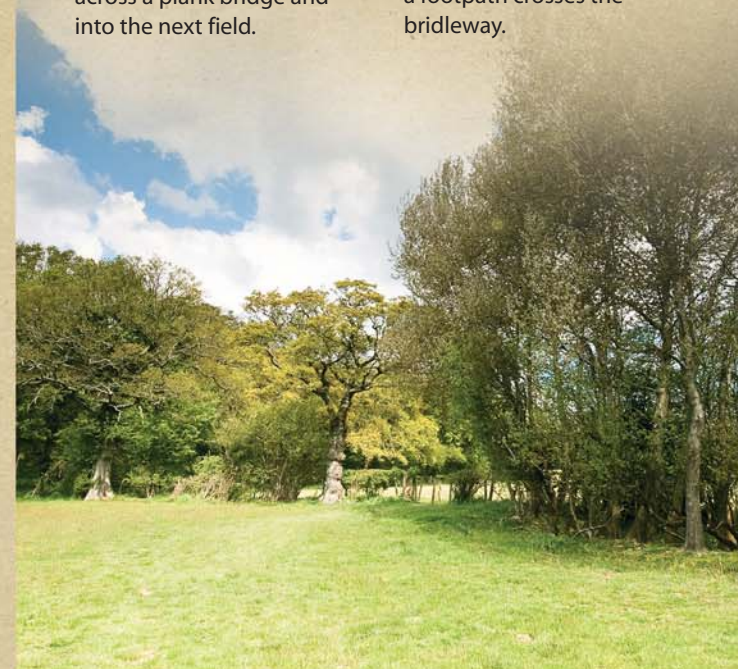
11 At the end of this field, follow the footpath as it turns right over a stile, across a plank bridge and into the next field.

10 Cross another stile into the next field, where you will see a waymark indicating a footpath crossroads. Turn right here and follow the hedgerow on your right. Cross another stile into the next field and continue straight on with the hedge still on your right.

9 Follow the post and rail fence on your right, past a house on your left, over another stile and into a meadow. Continue along the edge of the field, keeping to the hedgerow, which becomes a post and wire fence, on your right.

13 Immediately after the next house on your right, turn right on the marked bridleway, through a pedestrian gate. After about 20 yards the path turns sharply left and leads into Grassy Wood. Continue to follow the path through the wood, passing over two plank bridges, until you come to a waymark where a footpath crosses the bridleway.

12 Cross the field to another stile in the hedgerow opposite, leading into South Road, and turn left to follow the road as it passes Lambourn Farm on your left and a set of barns and then the sign for Wivelsfield Green. Pass a white house on your right and keep following the road around a right bend.



17 Go over this stile and continue downhill, with the houses on your left, round a vegetable patch and chicken run on your left, to a pedestrian gate. Go through the gate and follow the waymarked path across the field to a gap in the hedge in the far left corner of the field.

16 Follow the fence to a stile and cross it into a paddock with some stables on your right. Cross the paddock to a second stile, with two houses ahead of you.

15 Cross the stile and follow the hedgerow on your left uphill for about 40 yards. Where the hedge turns away to your left, continue diagonally right across the field towards the corner of a post and rail fence surrounding the garden of the building (St Peter and St James Hospice) on your left.

14 Turn right along the footpath, cross over a stile and follow the post and wire fence on your left up towards a set of metal gates. Go through the first gate, and then take the marked footpath on your right (not the farm track) between two post and wire fences, which leads to a stile in the hedgerow ahead.

20 Follow the hedgerow on your left to a stile, and continue along the edge of another densely wooded area and over another stile into Beresford Lane, where you emerge immediately opposite Elm Cottage.

19 Continue across the field to a stile just to the left of a clump of large trees in the hedgerow on the far side. Cross the stile into a plantation of young trees surrounding Old Gurr's Farm, which you can just see through the trees on your right.

18 Follow the path through the gap, crossing a small stream, and turn left. Follow the edge of the field round to its far corner (ignoring the first path into the wood on your left) until you come to a waymark directing you left, through a patch of woodland, over a stream via a wooden footbridge, and on to another stile. Cross this stile into a large field, which was once used as an emergency air field during the Second World War.