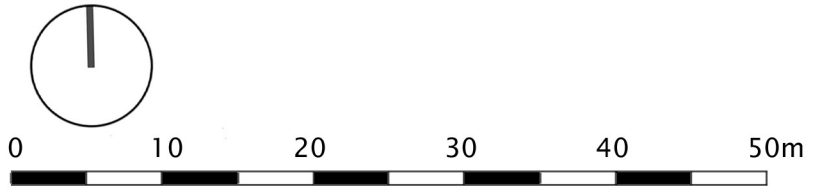




NOTE: THE SITE LAYOUT ILLUSTRATED IS PRELIMINARY SHOWING A MIX OF HOUSE SIZES RANGING FROM ONE TO FOUR BEDROOMS

FUTURE HOUSING DEVELOPMENT SITE (CALA HOMES)



PLUMPTON GLEBE & RECTORY
 Preliminary sketch site layout
 Residential development scheme (20 dwellings)
 Drawing No: 1504/SK02
 Scale: 1/500@A2. Date: 14/06/17

John Whiting • Architect
 14 Bates Road, Brighton, BN1 6PG
 M: 07818 443753
 www.johnwhiting.co.uk