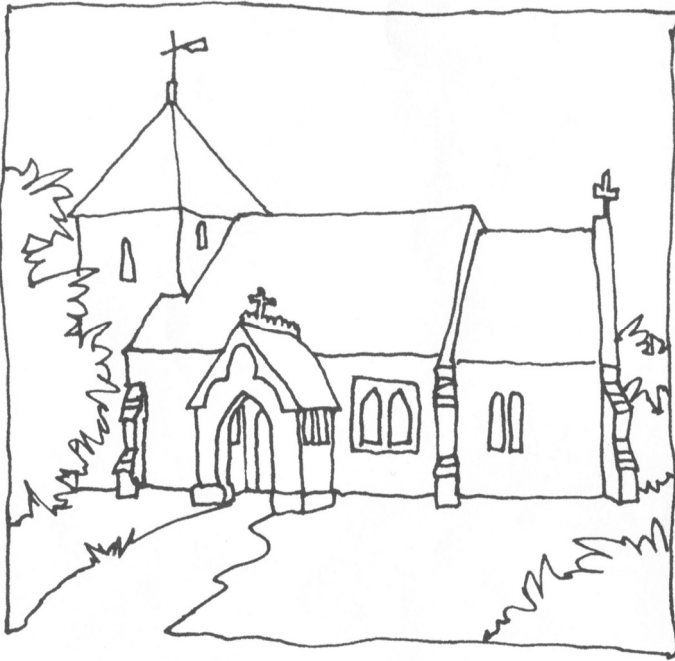


Plumpton & East Chiltington News

May 2024



Z. R. LANDSCAPES

Landscaping
Fencing
Hedge Cutting and Treework
Turf Laying
Driveways
Patos
And More

Zac Robins

07949 220721

landscape@nsza.co.uk

CONTACT FOR A FREE ESTIMATE

HILLS

OF PLUMPTON

DRIVER TRAINING CAR, LGV, PCV, FLT, HIAB

40 East View Fields
Plumpton Green BN7 3EF
Tel: 01273 890410
www.hillsofplumpton.co.uk

Eastwood Heating & Plumbing

Keep your energy bills low by making sure your boiler is serviced regularly. A well serviced boiler keeps your energy consumption low and can Identify faults early, avoiding expensive breakdown cost.

Plumpton Green based Heating Engineer
for all Oil and Gas appliances

please call James on 07876 294262 or 01273 890526



104339 528262

Plumpton Stores & Post Office

Your local village store is now open:

6.00am to 7.30pm Monday to Friday

7.00am to 7.00pm Saturday

7.00am to 1.00pm Sunday

8.00am to 1.00pm Bank Holidays

01273 890229

P.A. Brooks SON

INDEPENDENT FAMILY FUNERAL SERVICES

Ravenoak, 46 Allington Road, Newick
East Sussex, BN8 4NB
Tel (01825) 722895 (By Appointment)
35 Wivelsfield Road, Haywards Heath,
West Sussex, RH16 4EN
Tel (01444) 454391



FUNERAL PLANS FROM
Golden Charter



info@brooksfunerals.co.uk | www.brooksfunerals.co.uk



RICHARD SOAN ROOFING SERVICES

Flat & Pitched Roofing

Award Winning • Domestic • Heritage • Commercial • Education • Industrial

All advice free and without obligation

Tel: 01273 486110

Email: enquiries@richardsoan.co.uk

www.richardsoan.co.uk



PLUMPTON & EAST CHILTINGTON NEWS

May 2024

Page

Plumpton Parish Council	2	Arts Society	19
East Chiltington Parish Council	4	Plumpton Flower Club	19
Maria Caulfield	5	Plumpton School	19
Daniel Stewart-Roberts	5	Chailey Repair Café	20
RAF Chailey Memorial Service	7	Plumpton & East Chiltington Good Neighbours	20
Weald to Waves	9	The Rude Mechanicals	22
DR's Diary	10	Plumpton & East Chiltington Wildlife	24
Strawberry Fair	12	Footpath Detective	27
Farewell to Mick	14	Birds	28
Foot Path Soc.	14	Chailey Commons Society	31
Rev. Anne Dunlop	15	Citizen's Advice	32
Church Services	16	Clubs & Societies	33
Events Calendar	17	Citizens Advice	34
Happy Circle 70th Birthday	18		

Happy Circle

Thursday 9th May

2 - 4pm

Annexe

Jenny's Baking Skills

For more details contact:

Cherie 01273891592

JUMBLE SALE

Raising Funds for the Village Hall

SATURDAY

25th May

2.00 pm – 4.00 pm

Refreshments and Tombola

PLEASE BRING JUMBLE TO THE HALL BEFORE 10.00

NO large items of furniture, electrical items or duvets will be accepted.

Help is always appreciated on the day and any items for the Tombola can be delivered to 30 West Gate.

COPY DEADLINES

17th May for June

15th June for July



**Copy to The Poplars, Station Road
or email: pecncopy@gmail.com or Telephone: 01273 891 427**



Plumpton Parish Council

www.plumptonpc.co.uk

Annual Parish Meeting

This year our Annual Parish Meeting will be hosted by Plumpton Racecourse. The Racecourse management will be giving a short talk on the Plumpton Racecourse operation. With its aging facilities, a constant program of reinvestment is required to remain compliant with regulations and to remain an attractive proposition for racegoers. Find out more by coming along on May 21st, 19:30 start. Refreshments will be provided.

Housing Need Survey

Thank you to those who responded to the Housing Needs Survey. We had a 32% response rate which we are told is a good result for these surveys. The responses are now being analysed by Action in Rural Sussex and we hope to have their report in time for the Annual Parish Meeting on the 21st May.

New Pavilion Project

The working group have started to meet with architects and providers to explore the possibilities for a new pavilion. Fundamental decisions need to be made such as, do we demolish the old pavilion and build new, or do we renovate what we have? If a new build, then should we include a facility for Honeybees within the same building or provide a separate structure but in close proximity? Soon the Parish Council will be consulting with residents and sports users on these issues to gather views and ideas. The consultation will be in the form of a short online questionnaire but if you'd prefer a paper copy please contact our Clerk, Anita Emery.

PARISH COUNCIL VACANCIES

If you want to contribute and have a say in how your village runs and engage with the community then why not sit on the Parish Council. Please contact our Clerk Anita Emery if interested. anita.emery@plumptonpc.co.uk
The date of the next Parish Council meeting is **May 14th, 19:45hrs** at the Village Hall. Members of the public are welcome to attend.

CAN YOU SPARE AN HOUR OF YOUR TIME FOR PLUMPTON?

Plumpton Village Society are looking for new volunteers to help run village events.

To register your interest, please email plumptonvillagesociety@gmail.com

Plumpton Activity Scheme

is a charity which provides affordable summer activities for local children in our lovely village.



The Activity Scheme is open for children who have started at Primary school, for Summer holiday after reception year to the Summer holidays after Year 6.

Activity sessions run from 9am - 3pm three days a week throughout the Summer holidays and are held at the Plumpton Pavilion Hall.

Bookings link will be available shortly and advertised via the school and throughout the village.

Station Partnership Team

We hope you have enjoyed our winter displays at the station, especially our 'host of golden daffodils.'

It's that time of the year when we are once again planning our summer planters at the station. This is only possible if we are able to secure sponsorship for our planters.

Anyone who may be interested in being a sponsor or who would like information about joining our team of 'watering' volunteers, please contact me.

To sponsor a large planter is : £45

A small one is : £25



**Floral Art
by
Nichola Massingale**

Weddings
Funerals
Hospitality
Special Occasions

Tel. 07970 462337

Email: nichola@massingale.co.uk
www.plumptonflowers.co.uk

Rupert Thacker
Furniture Restoration Services

*Including Furniture repairs, Polishing etc. of
Antique, Contemporary, and Reproduction
Furniture*

Fletching, E Sussex, TN22 3TQ

Tel : 01825-713111 (Workshop)
Mobile: 07950-035044
Email: sales@rupert-thacker.com
Website: www.rupert-thacker.com



- All aspects of tree work
- Hedge maintenance
- Planting
- Fruit tree pruning
- Traditional hedge laying
- Woodchip supplies

Contact Oliver Marlow
07507 523748 / 01273 891702
oliver@newleaffreesurgery.co.uk

newleaffreesurgery.co.uk

**A clean carpet isn't all we
ServiceMaster Clean guarantee.....**

- Carpet Cleaning & Repairs, retuffing & reweaving
- Upholstery Cleaning
- Rug Cleaning including Wool & Silk
- Curtain Dry Cleaning on-site-at-the-window
- Carpet Moth Treatment Service
- Fire & Flood Clean-Up Service

Now celebrating 24 years of providing 1st class service in Plumpton, Plumpton Green, East Chiltington, Lewes & Brighton.

Call Paul or Liz on 01273 733339

For a free no-obligation quotation
Or email paul@servicemasterbrighton.co.uk

See our website for special offers
www.servicemasterclean.co.uk/plumpton-green

Treats by Post - Brownies - Gift Boxes
Hand Painted Cookies - Cupcakes
Celebration Cakes
Wedding Cakes

The Crafty Cake Lady
We Bake with Love

www.thecraftycakelady.co.uk
FREE LOCAL DELIVERY
07725979297 / 01273 891067




The Greenhouse

B&B in the heart of Plumpton Green

Separate annex, sleeps 4

Previously known as 'Edgington Cottage'

To book please call Clare

07747 036049



Annual Parish Meeting

The Annual meeting for East Chiltington residents is on May 21st at 7pm in Beechwood Hall, Cooksbridge. This is a chance for residents to hear about the work of their parish councillors and raise any items they may have.

This meeting will be followed by the annual meeting of the parish council and residents may raise issues in the first 15 minutes of that meeting and are welcome to stay and view proceedings.

Novington Lane protected verge

The protected wildflower verge between the B2166 and the entrance to Warnigore Farm has been seriously eroded over the course of the winter by vehicles passing one another by driving up on to the verge, some of the protecting bollards having been lost or damaged. Following pressure from the Parish Council and from ESCC Councillor Matthew Milligan, the Highway Steward has inspected the verge and missing bollards should be replaced during April.

Website

A reminder that the East Chiltington website is now live. You can find it at www.eastchiltington.net. Please register on the site if you would like to receive news updates.

Digital Switchover - Changes to telephone landlines

The UK's telephone network is changing. Between now and 2025 most telephone providers will be moving their customers from old analogue landlines over to new upgraded landline services using digital technology.

This means services that rely on the old landline system such as home phones and healthcare devices will be switched over.

How will it affect me and what do I need

to do?

The good news is your landline isn't going anywhere and for most consumers and businesses this change will be straightforward. In fact, many customers are already making the switch when they upgrade to full fibre broadband.

Your telecoms provider such as Virgin Media, O2 or BT should contact you before the switchover to check in and discuss what you need to do to make sure your service isn't affected. However, we're encouraging everyone to know what to expect.

If you have an internet connection, the change may be as simple as plugging your phone into your broadband router rather than the socket on the wall.

If you have other devices connected to your phone line, such as alarm systems, your alarm service provider might need to upgrade your device to make sure it is compatible.

If you are unsure about how a device in your home or business might be affected, it is recommended you contact the equipment supplier or device manufacturer to find out whether it will still work on a digital phone line.

In an emergency

Digital landlines cannot carry a power connection, so in the event of a power cut they will not work. If you have a mobile phone this can still be used, but if you've no other means of calling the emergency services your telecoms provider will offer a solution to allow calls to be made to emergency services.

If you're worried about your devices that depend on the old landline, please contact the company who provide them. They will be able to give you more information.

You should tell your telecoms provider now if you have no other way of making emergency calls.

[Digital Switchover factsheet \(PDF\) \[582KB\]](#)



Maria Caulfield

Local News – Royal Mail Update

Many of you will be aware of issues with Royal Mail letter deliveries over the past few months. I have heard from many concerned residents about delays, which has had a severe impact on people including missed medical appointments and prescriptions.

I am keen to hear from residents if this is improving as I am picking up that in some parts of the constituency a good service is returning but in others it is still very hit and miss. I have met with local posties regularly and been to the Lewes sorting office to see first hand the pressures they are under. Before Christmas staff were not being replaced to cover sickness or leave and vans were being taken away from routine walk routes. I met with local managers to raise concerns from residents and to ask them to urgently look at the situation of staffing and resources.

When things did not improve after Christmas, as a group of Sussex MPs we met in Parliament with senior representatives from Royal Mail so we could discuss the continuing local issues with the service.

Since then Royal Mail have confirmed that they have ended their recruitment freeze and so more posties are now working in each area so residents should start seeing improvements. They have also started hiring more vans so that posties, particularly in rural parts, should again notice the difference.

Since this meeting a few weeks ago there does seem to have been improvements in the service. With most areas in the constituency seeming to have returned to a normal service.

I would encourage anyone who is still experiencing issues with their post to please report it to me at maria.caulfield.mp@parliament.uk so that I can make sure Royal Mail are aware of the situation and can rectify it.

Daniel Stewart-Roberts - District Councillor

It was good to see a healthy level of participation in the recent Local Plan consultation. A significant number of individuals, groups and organisations submitted formal comments between November and February. There was also a good turnout at the roadshow events, even though the communication around these wasn't ideal: I am told that lessons will be learned. There is another round of consultation to come soon. This will include early engagement with all town and parish councils and will also focus on getting more young people involved in the process – perhaps inevitably they have been underrepresented so far.

The wheelie bin rollout in our part of the district is now complete but it's not too late to change your mind about your bin size. If you have been given the larger (240l) sized bin and would prefer the smaller (140l) one or vice versa you can arrange a swap by emailing CustomerFirst@lewes-eastbourne.gov.uk with the size of bin you want. You can also ask for your old bin to be collected to be repurposed or recycled.

The Council is aware that some residents might find the new bins hard to handle and offers assisted collections, where your bin will be put out and returned for you either permanently or temporarily, for example if you have had an operation. You can apply for this service online at www.lewes-eastbourne.gov.uk/assisted-collection or by calling 01273 471600.

Being the LDC representative on the South Downs National Park Authority and a member of the Park Planning Committee has given me the opportunity to learn about the good work the SDNP does and the ways that communities in and close to the park benefit from its existence. If you don't already, I would encourage you to sign up to the SDNP's monthly newsletter: <https://www.southdowns.gov.uk/join-the-newsletter/>

Email: daniel.stewart-roberts@lewes.gov.uk Telephone/text: 07966 338429

TREE WISE

Tree Surgery • Hedge Maintenance
Fire Wood
Stump Grinding • Strimming
Woodland Management Schemes
Experienced • Insured £5m
Free Quotation
BSc (Enviro Mgt) • LOLER Inspector
NPTC

Charlie Layfield

Office: **01825 724655**
Mobile: **07888 838423**
www.treewise.co.uk

 Checkatrade

Help You can Trust

Services Provided: Companionship, Dementia Support, Domestic Duties, Medication Assistance, Gardening (basic), Personal care, Transport services, Meal preparation, Post hospital care, Respite care, Secretarial and Administrative assistance, Shopping assistance, Social activities.

Contact: Anna Rummeli
Mobile: 07511 351 807
Email: aowellness1@gmail.com



Member of the National Association of Care and Support workers

Advertise Here !!

Contact
pecntreasurer@btinternet.com

Or

Phone
01273 891427

Heath Farm Holiday Cottages South Road, Plumpton Green

Three 4 star cottages sleeping
two, four and six.
Suitable disabled
Minimum 2 night stay
Regret no smoking or pets.
01273 890712
www.heath-farm.com

Plumpton Pilates

Morning and evening group classes
in Plumpton Village Hall.

1:1 Pilates at home also available.
Please contact Charis 07881 825007
charispilates@gmail.com



N.L.S

NICK LANAWAY SERVICES



Garden and Ground Care Machinery
Service and Repair
Quad Bikes

07503 891335
nicklanawayservices@yahoo.com

RAF Chailey Memorial Service

The RAF Chailey Memorial Service at the Plough Inn Plumpton will be held at 3:00 PM on Sunday 2nd June .

As well as remembering the three Polish spitfire squadrons which flew from Plumpton's own WW2 airfield, we will be commemorating the 80th anniversary of D-Day.

Please join us to make this a special event, all are welcome,

There will be a collection in aid of the Royal British Legion and St. Peter & St. James's Hospice after the service.



P. M BUILDERS

5 School Cottages,
East Chiltington

**For all your
building
needs**

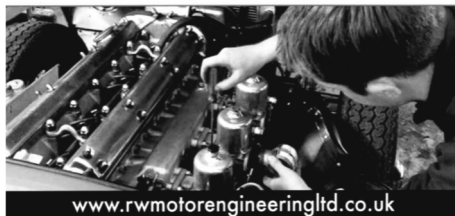
Tel: 01273- 890964
Mobile 07813 114470

YOUR LOCAL BUILDER



Your local friendly family run garage with over 40 years experience in all aspects of vehicle repairs, old, new, classic, sports & prestige.

**All Makes & Models • M.O.T's & Servicing • Repairs
Diagnostic Specialists • Wheel Alignment
Tyres & Exhausts • Clutches • Cambelts • ECU Remapping
Air Conditioning • Brakes • Brake Disc Skimming
Welding & Fabrication • Engine Tune-ups
Petrol Injector Testing & Servicing • Diesel Specialists
Carbon Cleaning • Courtesy Cars Available**



www.rwmotorengineeringltd.co.uk

Unit 1, The Old Brickworks,
Station Road, Plumpton Green
East Sussex BN7 3DF

Tel: 01273 891393
Email: rwengineering@live.co.uk



PHYSIOTHERAPIST

Amy Cooper BSc (hons), MSc, HCPC, MCSP

Physiotherapy assessment and treatment in the comfort of your own home.

All musculoskeletal, neurological and respiratory conditions treated.

Remedial massage/Sports massage
Manipulation Mobilisation
Exercise prescription Dry needling
Electrotherapy Work station assessments

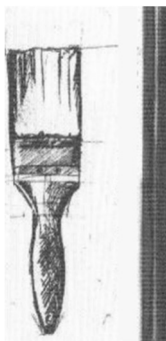
Telephone 07866 762999
accooper362@gmail.com

Painter

Decorative Paint Finishes,
Domestic, Business
& Building Trade
Michael Webber

michael.webber6@yahoo.co.uk
01273 890779
07880 558 556

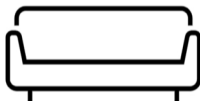
2 School Cottage
East Chiltington
Lewes BN7 3AY



SUZANNE'S UPHOLSTERY

(AMUSF Qualified)

- ❖ Bespoke Upholstery
- ❖ Chairs
- ❖ Headboards
- ❖ Footstools
- ❖ Soft Furnishings



Email - suzannes_upholstery@hotmail.com
Mobile - 07738 305342
Instagram - @suzannes_upholstery



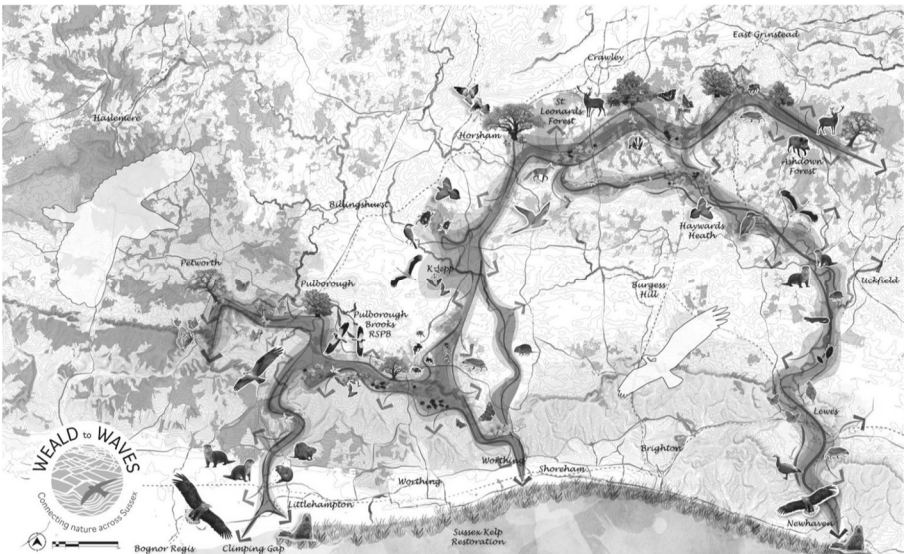
07702208475
ODINTUNE COTTAGE EAST CHILTINGTON
deadlyseriouspestcontrol@gmail.com

Weald to Waves: Connecting for nature

Are you a school, church, local business, community orchard or allotment group? Are you part of a community group managing green space such as a burial ground or community garden? Are you a gardener trying to support wildlife in your garden, balcony or window box?

Could you pledge your space to help our local nature survive and thrive?

The **Weald to Waves** project, coordinated through the Knepp Wildland Foundation, has created an ambitious 100-mile nature friendly corridor across Sussex. From the High Weald and Ashdown Forest, through the Low Weald and over the South Downs National Park, it follows the river catchments of the Arun to Climping, the Adur to Shoreham and the Ouse through Lewes and down to us here on the coast at Newhaven and Peacehaven. It also stretches out to the kelp forests of Sussex Bay (see map).



The **Weald to Waves** project is mapping and supporting efforts of all sizes to connect and engage all our farmers, landowners and communities to support nature recovery. It is a leading national example of how this work can coexist and support sustainable food production alongside our cultural and social lives.

The corridor will enhance habitats and support species and now everyone in Sussex can get involved!

To register your garden or greenspace and become part of **Weald to Waves** go to the '*Get Involved*' tab on the **Weald to Waves website** and sign up to the **Gardens & Greenspaces** network. Just pop in your postcode to find out if you are in the core corridor, radiant zone, or wider Sussex area, then fill in a few simple details. Signing up will offer ideas and practical guidance for nature recovery, as well as opportunities to connect with others, share knowledge and experience. You will learn about species and habitats and taking part in monitoring and recording our local wildlife. Your pledge can even appear on the project map. So, join the corridor now and join the dots for nature!

DR's Diary...

Art or Graffiti?

'Do you see this as art or graffiti?', we were asked by our lecturer. As each image was paused on the screen we had a show of hands. Tag art, the sort you see sprayed around towns and on train carriages was given a big 'thumbs down'. At this point I should say that our 'hands' all tended to be of a certain vintage and in no way representative of a cross section of British society, 'younger hands' may have voted in a much different way. In fact, I'd say they almost certainly would! Work by Banksy was viewed a bit more favourably. And there was much in between.

Banksy's ID is shrouded in mystery, which probably adds to his global profile. He is seen as a political activist and his work is often (but not entirely) provocative.

To protect his identity it is essential he executes his work in super quick time, this is achieved by spending weeks or even months, preparing stencils to make this possible. He frequently engages with the environmental location, windows, doorways, lampposts, etc are often included. 'Morning is broken' showed a young boy opening his curtains. The 'curtains' were 2 sheets of corrugated iron fixed on a wall and the artwork was stenciled in between. Shortly after, the building & artwork were demolished. In 2018, 'Girl with a balloon' was sold by Sotheby's, the hammer came down at £860K (over a £1m once buyers premium was added), before the auctioneer could proceed to the next lot there was a sudden noise and the painting started to pass through a shredder that Banksy had cleverly concealed within the frame, you can imagine the shock horror in the saleroom as a valuable artwork was actually being destroyed, LIVE! There are some priceless (sorry, couldn't resist that!) recordings on You Tube. Ironically, the shredder jammed halfway leaving the top half intact in the frame and the (still recognisable) shredded half dangling below. Auction rules state a purchaser may withdraw their bid if the lot is not in the original bid condition. In this instance, our lady collector decided she still wanted it, quite a wise choice as its estimated that this stunt and the ensuing global publicity has increased its

value by approximately 50% ! It was also the first time a work of art had been created in a saleroom. The painting was subsequently re-named,

' Love is in the bin'.

We were also introduced to Mr Brainwash , an American protégé of Banksy. He works in mixed media materials/collage and sometimes , with Banksy's blessing, uses some of Banksy's stencils. Less 'edgy' than Banksy, Mr Brainwash likes to occasionally throw in a world figure, The Queen, Charlie Chaplin, Albert Einstein, to name but a few. His slogans tend to be more positive , 'Never give up', 'Dream big dreams', ' Follow your heart', etc..

If they visited Plumpton, I feel Banksy would leave his mark along the lines ' don't urbanise the downs' or maybe on a pothole theme? Mr Brainwash would include scenes from the panto with a ' Keep smiling' slogan sprayed across it.

As for the images we gave a thumbs down to? Well, I must be getting old, at least in my day you could read the words. Also, graffiti could be funny. Back in the day there was a poster with a caption ' my mother made me a homosexual' (not sure who commissioned it), a wit had daubed beneath it ' if I gave her the wool, would she make me one?'

Meanwhile, I'm off to rummage through the garage for those old aerosol cans that have been collecting dust for ages.

Tag # DR's diary.

Newick Bowls Club Open Days

Sunday 5th May and Saturday 25th May

10 - 4

Come along and have a go!

All equipment will be provided and there will be refreshments and a bar.

Marbles Road, Newick, BN8 4LR

www.bowlsnewick.co.uk

contact Jan 01825 723883 or Carol 07821022287

Sean Mannion Carpentry 07958647918 seanmannion67@gmail.com

Skilled carpenter with 30+ years' experience.

Services include: Bespoke fitted furniture Heritage timber building restoration
Garden decking Raised garden beds
Door hanging Timber cladding
Understairs storage solutions First fix carpentry

Harrods trained, I pride myself on quality of workmanship and reliability. I can provide a portfolio of previous work on request. Fully insured.

www.seanmannioncarpentry.co.uk

SPEAK FRENCH . . .

... SPEAK ITALIAN

Small local classes (max 4)
Flexible times Beginners & Intermediate
Individual FaceTime lessons £25
NEW! Walk and talk Conversation small groups; "Promenade" & "Passeggiata"

Contact Sue Strong **07900 594375**
email: seegreenwaitrose@gmail.com



LEARN HOW TO SHOOT A BOW

Plumpton Bowmen hold **Beginners' Courses** twice a year in April and October on the Playing Field.

We hold **Have-A-Go** sessions the 3rd Sunday of the month from April to August from 2pm to 3.30pm.

For further information see:
www.plumpton-bowmen.org.uk

HOME CHARLES CARS

Plumpton Based

Private Hire Taxi Company

- AIRPORT TRANSFER SERVICE
- PRESTIGE VEHICLES
- COMPETITIVE TAXI PRICES
- CORPORATE ACCOUNTS
- CREDIT CARDS WELCOME
- SALOONS AND ESTATES
- PROFESSIONAL, RELIABLE DRIVERS

077 344 89222

homecharles@btinternet.com

Guy Sumners

Window Cleaning

J&B Services

- Conservatory and roof
- Fascia
- Gutters clearing
- Cladding
- Solar panels
- Patio Jet washing etc.

Betty: 07941 899324

Jerry: 07941 899754

email: info@jandbcleaning.co.uk

website: jandbcleaning.co.uk

Facebook: J&B Cleaning Services



Plumpton Strawberry Fair

SATURDAY 15 JUNE
NOON TIL 4PM

Stalls | Refreshments
Entertainment | Dog Show

plumptonvillagesociety@gmail.com

HOME • BAKING

jenny's

M: 07711562905
T: 01273890582

Traditional home baking: classic bakes, cupcakes & celebration cakes; or Afternoon Tea in the comfort of your own home.

Find me on Facebook

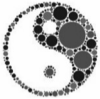
Andy Westgate

Local plumpton based gas safe registered plumbing & heating engineer



07415529656

awestgateheating@hotmail.com



Tai Chi with Jo

Tai Chi Classes in Plumpton Green & Lewes

Beginners welcome

No experience necessary

tel: 07986 713974

email: jo@taichewithjo.co.uk

web: www.taichewithjo.co.uk

Joe's Bees

Have you always wanted honey bees but always felt too inexperienced to keep them? How about a personal beekeeper then! Hiring Joe from Joe's bees to manage your hives is the perfect way to solve this issue!

What this entails...

- He will teach you how to look after your bees
- He will manage your bees for an hourly rate of £25 (4 hours a week max in summer)
- He will harvest and jar your honey (jars will come free!) you will be charged a 2 day rate
- He will help you set up and collect your bees at the beginning of the season for a fair price!

Joe's bees is all about working with nature and wildlife in an environmentally friendly way. Not only is Joe a beekeeper he also does extra work such as: creating wildflower meadows, soil management, gardening advice and environmental farming advice.

So you will be in good hands!



Instagram - @_in_the_hive_

joethebeeman@gmail.com

07842862709

Forest Friends

Woodland crafts, music, nature connection, wild-craft skills and outdoor play for children aged 1-4
£10 per session paid termly
or £12 drop in rate



Now on Fridays: 10-11.30am

By the Ferrings lake in East Chiltington

contact Sarah on 07980 006680 or sarah@littleseeddesign.com



THE JOLLY SPORTSMAN

The Jolly Sportsman

Idyllic, cosy, country pub with rooms

4th - 6th May: Jolly Spring Festival - Garden Bar opening, live jazz music, stalls showcasing local produce, special British menu, local sparkling wine
16th May - Wine Society 6pm - 7pm (£30 per person) Register interest at hello@thejollysportsman.com

Open every day for breakfast / brunch, lunch, dinner and rooms

hello@thejollysportsman.com 01273 890400
Chapel Lane, East Chiltington, Lewes, BN7 3BA

www.thejollysportsman.com

Mick finally does 'go off the rails'!

On 11 April the village came together at the station to say thank you to Mick Newman for his 17 years of service.



Over 50 people came (and one stray who wanted to buy a ticket of all things!) to wish him well in his retirement.

Those 17 years have included, since 2010, being part of the Station Partnership which he helped to establish.

Lots of snacks, delicious cakes and soft drinks were on offer – thanks to donations from Plumpton Parish Council, Southern, and amazing sandwiches made by Jenny Hones and cakes galore made by the Station Partnership volunteers.

It was a lovely send-off with gifts from the village being presented by Paul Nicholson, Leader of the Station Partnership.

Best wishes Mick – and happy fishing!



PLUMPTON & EAST CHILTINGTON BEE KEEPERS



Honey bees swarm on warm sunny days from now until the end of July.

If you see a swarm cluster, our local bee keepers who will find them a new hive.

Contact Jim Thompson
on 07597 067535

Plumpton & District
Footpath Society

PROGRAMME FOR April 2024



Wed. 1st May, meeting at 10.30 (starting point tbc) for a 7m circular walk, from Falmer, uphill on to part of the South Downs Way, along the ridge to Plumpton Plain, Streathill Farm, St Mary's Farm, University of Sussex, Falmer, Will have a picnic lunch

Walk Leaders: Judy and John Lawrenson 01273 472277 / 0781551068

Sunday 5th May, starting 2pm at Allington Road, Newick, for a 4.5m circular walk - the Newick Camel Walk.

Walk Leaders: Sue and Robin Akers 07775423361

Saturday 18th May, starting 10.30 in the c/p opposite the Griffin Inn (TN22 3SY), for a 4m circular walk around Fletching, following field paths a quiet stretches of country roads.

Walk Leader: June Denyer 07889610183

Rev. Anne Dunlop

Let's praise the man who goes to light
the church stove on an icy night.

Let's praise that hard worked he or she
the Treasurer of the P.C.C.

Let's praise the cleaner of the aisles,
the nave and candlesticks and tiles...

(John Betjeman 'Poems in the Porch' 1954)

This time of year, in the church is when we have our Annual Parochial Church Meeting. It's an opportunity for us to take stock of the past year. We wade back through our diaries and PCC minutes and bring together the 'Annual Report'. Which sounds rather grand, but these few pages of text contain memories of much good and much achieved. At the meeting we re-establish the PCC, saying thank you to those stepping down and welcoming others willing to help with the practical work of the church.

Pondering the world of Mr Betjeman, 1954 makes me aware of how times have changed. We no longer must light the basement fire. Indeed, the basement is permanently flooded, no one really knows why, so that could be an issue. But we can still applaud and be grateful, that we have a Treasurer and those who care and clean. Mr Betjeman does not credit Churchwardens, perhaps he does later in the work. Such people who take on this responsibility are rare and valued.

Seventy years on from 1954, it is increasingly hard to find people willing to 'get involved'. In all sectors the level of volunteering has dropped dramatically and within the church, it is no different. It is a challenging landscape for all areas seeking volunteers. A Theos report found that many charities, faith groups, and community projects reported the loss of significant numbers of their previous volunteers since the pandemic, due to a combination of changed working patterns, retirement, and economic pressures.

The Department for Culture, Media and Sport reports the proportion of the adult population volunteering in a formal setting at least once a month, fell from 27 to 16 per cent between 2013 and 2021. The most common reasons

given for not volunteering, were work commitments and childcare. Many women have their first child later in life and at the same time find themselves also caring for elderly parents, the so called 'sandwich generation', 1.3 million. Understandably this puts pressure on time for family and little or no time to 'volunteer' for anything.

Mental health research shows that all work and no play indeed damages Jack and Jill. We need to do something that nourishes us as a person. Our communities and our involvement within them, can broaden our horizons and help us break out of self-referential bubbles. It is good for us!

This last week two friends have both exemplified just what getting involved can mean. A certain person, with a friend, (both attired as insects!) did a sponsored walk. Another spent a week standing in a shopping mall during Parkinson's Awareness Week offering information and support.

Volunteering fosters hope. The Christian faith is BIG on hope. It is a hope that looks beyond the immediate to what God is doing - always in love - toward the creation; it is we who mess things up. But all is not lost. In a small way we can each be redemptive and foster hope. Doing something that is focussed on others helps us find ourselves and become encouraged often by the most unlikely 'others'. Two quotes to ponder...

'Don't ask what the world needs: ask what makes you come alive, and go do it, because what the world needs is people who have come alive.' (Howard Thurman, pastor civil rights activist adviser to Martin Luther King, Jr)

'What can I do today that will last into eternity? Learn to love, find out what makes you come alive, and ask God "What are you giving me hope for?"

Rev Anne Dunlop

revannedunlop@gmail.com

Church Services for April 2024

Sunday 5th May All Saints	Easter 6 11.00am	Fifth after Easter	Rogation Sunday Family Communion
Thursday 9th May All Saints	Ascension Day 10.00am		Family Communion
Sunday 12th May All Saints	Easter 7 11.00am	Sunday After Ascension Day	Family Communion
Sunday 19th May All Saints	Pentecost 11.00am	Whit Sunday	Family Communion
Sunday 26th May East Chiltington	Trinity Sunday 11.00am		Family Communion
Sunday 2nd June All Saints	Trinity 1 11.00am	Environment Sunday	Family Communion

Where there is a fifth Sunday in the month the service is at St Michael's Plumpton at 11.00am.

Please note that a short Communion Service and time of reflection precedes the Tuesday Lunch Club in All Saints Church at 11.30 am each week.

If you are unable to make your way to any of our church services then please contact one of our churchwardens who will arrange transport.

For general church matters please contact Rev Anne Dunlop 01273 890006 in the first instance or one of the Churchwardens.

East Chiltington - Vacancy x 2

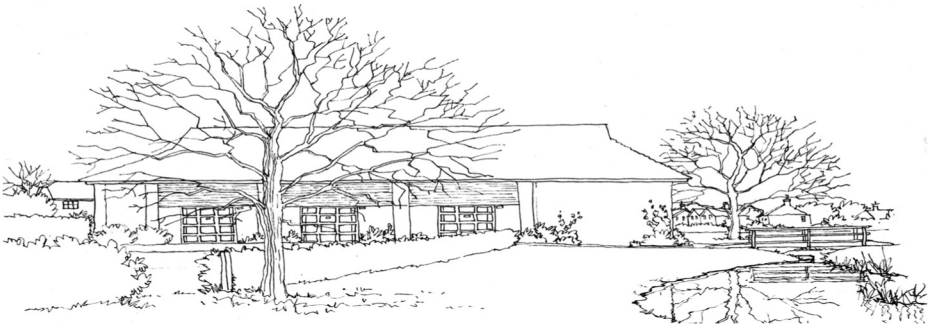
Plumpton Howard Wood 07794484373

Tuesday Lunch Club

This meets in the church annex at 12.15pm for 12.30pm and aims to offer food and friendship weekly. The lunch is open to **everyone** and you will receive a warm welcome and the chance to chat whilst partaking in a hearty meal. There is a choice of meat based, vegetarian and gluten free dishes, served with vegetables, French bread and green salad. A variety of puddings are complimented by tea, coffee, cheese and biscuits. If you feel that you have skills to join our team of volunteers or to contribute an occasional dish your offer would be gratefully received. Please contact The Rev Anne Dunlop in the first instance, or one of the Churchwardens.

Help Needed

We are looking for additional volunteers to transport members of our congregation to church to services, or , or by joining the All Saints Church cleaning rota or to offer hospitality by providing Sunday coffee after our service. Please contact a churchwarden if you can help or Bob Doran 07484 138203



VILLAGE EVENTS CALENDAR

VH = Village Hall

HQ = Scout HQ

TC = Tennis Club

StM = St Michael's

ANX = Church Annex

PAV = Pavilion

ECC = East Chiltington Church

Sch = Plumpton School

ALC = All Saints Church

BOOKINGS

Village Hall & Pavilion:
Church Annex

Jane Donovan 07747 050903 or 01273 891036
Bob Doran 01273 890211 or 07484 348341

- | | |
|----------------------------------------------------------------------------|-----|
| 9th May - Happy Circle with Jenny Honess 2pm | ANX |
| 15th May - Plumpton Flower Club - Ben Cross 7.30pm | VH |
| 25th May - Village Hall Funds Jumble Sale 2pm | VH |
| | |
| 2nd June - RAF Chailey Memorial Service 3pm | |
| 8th June - St. Peter & St. James Fabric Sale | VH |
| 15th June - Village Fair | VH |
| 23rd June - St. Peter & St. James Open Village Gardens | |
| | |
| 3rd July - Rude Mechanicals | VH |
| 6th July - Model Railway Show 10 - 4 | VH |
| 27th July - St. Peter & St. James Jumble Sale | VH |
| | |
| 3rd Aug - Hort. Soc. Summer Flower Show.. 2pm | VH |
| | |
| 21st Sept - Apple Pressing Day | VH |
| 21st Sept - Hort. Soc. Autumn Flower Show. with Apple Pressing. 2pm | VH |
| 28th Sept - Model Railway Show 10 - 4 | VH |
| | |
| 22nd Nov - Hort. Soc. AGM 7.30 | VH |
| | |
| 30th Nov - St. Peter & St. James Festive Fair | VH |

Happy Circle Celebrates 70 Years !!

Members of the Happy Circle celebrated the group's 70th Anniversary with afternoon tea, fizz and music.



Uckfield, Lewes & Newick Arts Society

The Civic Hall, Uckfield, May 8th 2.30

Rosamund Bartlett: The Culture of Ukraine

At any time, this would be a wonderful lecture, but in the present situation it must surely be very poignant. Rosamund will tell us how art and architecture have evolved in this now shattered country. The many multi cultures that have, over the centuries, influenced Ukrainian art even today. Secret codes in ancient embroidery, Cossack dancing even the national dish of Borsch, all have had their say!

Rosamund is a cultural historian, author and translator. She has written biographies of Tolstoy, Chekhov, Wagner and a translation of my favourite book, Anna Karenina. She has also contributed regularly to the BBC Proms and opera broadcasts.

We are in the Civic Hall Uckfield, parking is free and the lecture will start promptly at 2.30. The cost is £7 but if you are interested in joining, please contact me. We look forward to welcoming you to what I am know will be a most colourful and musical experience.

Annette Shelford
annette@shelford.net

Plumpton Flower Club

We are pleased to welcome

Ben Cross

Who will be giving us a demonstration
entitled

**"British Flowers Rock-
Alstroemerias & The British Flower
Industry"**

On

Wednesday, 15th May

Commencing at 7.30pm

At Plumpton Village Hall

Members £3, Visitors £8

Includes refreshments

There will be a raffle at the end of the
evening and Ben will be selling his
wonderful Alstroemerias!

Plumpton Primary School

Plumpton Primary School have now got a **Second Hand Clothes Recycling Bin** situated by the school gate (next to the bike shed).

By donating your old items, you will be helping raise much needed funds for the school.

The more you give, the more funds the school receives!

Thank you for your support.



CHAILEY REPAIR CAFÉ - MUSIC, MUSIC EVERYWHERE !!

With the revival of vinyl records and music cassettes, many of you are now bringing your old record players and cassette decks to us at Chailey Repair Café - usually, they've been up in your loft or gathering dust in your shed!! Here's a few tips before you bring them in to us....

If a power lead is required, please bring it! We can usually find something to fit in our spares box, but it saves time if you have it. Bring any speakers which plug in to the device too please....

Your record player may need a new stylus (the "needle" which plays the record). We don't carry stocks of those as there are so many different types, but an eBay search will help you track down a new one before you visit. With cassette decks, perished small rubber belts inside are the usual culprit - we have stocks of some of those. Oh - and if you don't bring a record or cassette, you'll have to listen to one of ours - ABBA mainly!!!!

Now is the time for us to look at your cycles which will need some attention, as well as mowers, trimmers and hedge cutters. Our amazing fabrics team will also be on hand to tackle clothing repairs, dolls and, of course, teddy bears!

Our 2024 dates are easy to remember - we are open every 2nd Saturday of each month between 10am - 1pm (13th April, 11th May, 8 June and so on).

Chailey Repair Café is part of a world-wide movement where volunteer experts repair things free of charge - although a donation towards running costs is invited. Anyone can bring along broken items or clothing needing repair from home, and have a cuppa and a cake while they wait.

Not sure if we can fix your stuff?
Contact us at chaileyrc@gmail.com and we'll see what we can do to help.

See you very soon!!

Bryan McAlley and the Chailey Repair Café team

Plumpton & East Chiltington Good Neighbours

**Telephone Contact 07478
524152**

Do you need help or someone to talk to? We are a group of local volunteers who offer a befriending service and help with everyday things such as shopping and simple household jobs, to anyone needing support. We can help on a regular or one off basis and, there are no charges associated with our help, with the exception of travel costs if we transport you somewhere such as to the doctors or another similar appointment. All our volunteers are DBS checked.

It doesn't matter what age group you are in or whether your family is local. If you feel you would like our help or, to talk about how we may help you, please phone Gina or Alison on the above number or, you can email us at:

pecgoodneighbours@gmail.com

New volunteers are always needed and very welcome. If you are interested in joining our team please get in touch on the contact details above.

We are having a pitch at the Village Fair on 15th June so come along and play one of our games or, just come and have a chat with one of our volunteers.

NEED AN ELECTRICIAN ?

KJB ELECTRICAL LTD

Your local electrician, based in Plumpton Green.

Part 'P' compliant & Fully Insured
For a free no obligation quote,
Call or Email Ken

T. **07766455378**

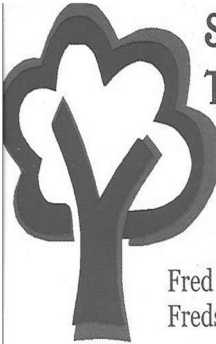
E. **kjbelectricaltd@gmail.com**

Love Your Clothes

**Get Ready For
That Special Occasion/Holiday
Just Revamp, Shorten, Mend**

I make curtains/cushions, kids stuff & lots more. **Give Me A Ring**

Fran: 01273890731, 07719539513



**SYMES
TREE SURGERY**

ALL ASPECTS OF TREE
SURGERY

HEDGE CUTTING

LOGS AND WOODCHIP

Fred Symes 07889420474
Fredsymestree@gmail.com



Experienced · Insured
Reliable

For a free friendly quote
phone Nigel Clough
on Newick 01825 723138
or **07504224335**

- Fencing
- Gate's
- Patio's
- Path's
- Hedge Cutting
- Rotovating
- Planting
- Shed
- Bases
- Lawn
- Mowing
- Turfing

Making
Mending
Altering



dodiesews.co.uk



Seamstress services
Dodie - **07934495628**

John Church electrician

Professional, Courteous

Local Electrician

For all your electrical needs

Fully Qualified - Part P Registered
All Work Guaranteed - Fully Insured

Call John
01273 900251

info@johnchurchelectrician.co.uk



OJH ROOFING

FOR ALL OF YOUR ROOFING REQUIREMENTS

07469944765

OJHROOFING@OUTLOOK.COM

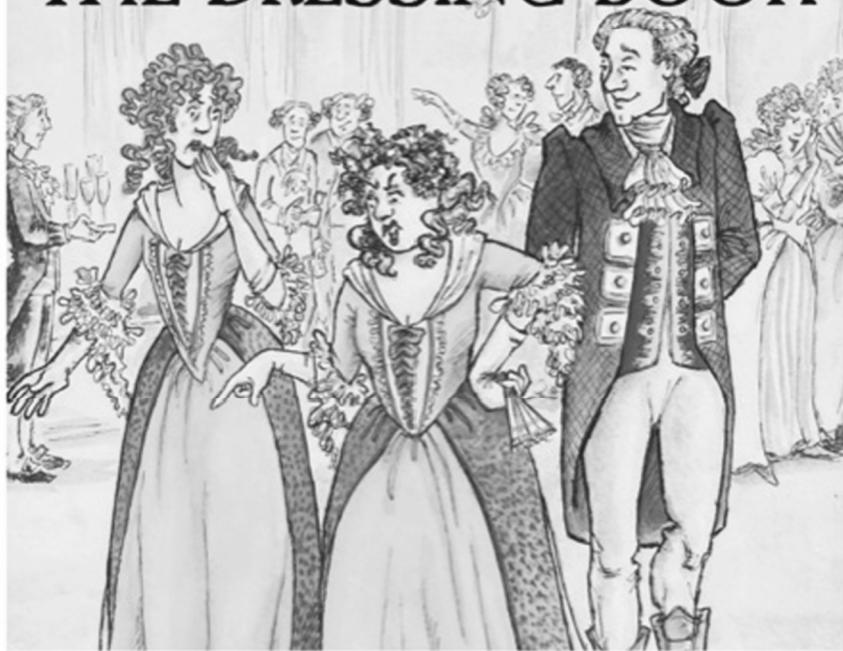
WWW.OJHROOFING.COM

3 HOLLYCROFT
EAST CHILTINGTON, LEWES
EAST SUSSEX BN73AZ

The Rude Mechanical Theatre Company

Present

THE DRESSING BOOK



The Village Green, Station Road, Plumpton Green,
East Sussex, BN7 3BQ Wednesday 3rd July - 7:30pm
Bring your own camping chair - picnics from 6.00pm

SUPERBLY DONE - THE STAGE 'A DELIGHT' - INDEPENDENT ON SUNDAY '
SUCH A GOOD NIGHT! - THE TIMES

National Press On The Rudes
www.therudes.co.uk



Please support a
local raffle on
the night to raise
funds for Rudes
in their 30th year

Contact Lee Stevens on 07887 562721, if you
cannot book online at www.therudes.co.uk

Shades Of Sussex

High Spec female Painter & Decorator

Competitive Quotes
References Provided
Fully Insured
07874 603503

YOGA CLASSES

with Andrew

Mixed and men-only classes for all levels in Plumpton Green



Contact 07932635778 for more details.

Keystroke Associates

Est. 1994

Specialists in
COMPUTER 'HOW TO' & SUPPORT - MID SUSSEX

07752 684733

jan@keystrokeassociates.co.uk
www.keystrokeassociates.co.uk

- Internet, WiFi & Email Issues
- Online Safety & Security
- NHS Online, Online Shopping & Bookings Safely
- Facebook, Instagram, WhatsApp

- Word Processing
- Spreadsheets
- Label Mail Merge for Xmas Cards
- Scanning & Printing
- File & Folder Management

- PC Healthcheck - Windows 11
- Purchasing/Installing New Devices
- Troubleshooting & Virus Removal
- Backup, Upgrades

PC • LAPTOPS • SMARTPHONES • TABLETS
DIGITAL CAMERAS • KINDLE

One to one
tutorials in
your own home,
on your own
devices



Be
prepared
don't let the
scammers,
scam
You.

Lucy Locksmith

24hr Callout
No Callout Charge



Rapid Response

No VAT

**Always
Checktrade**
Before you use them

Police checked

Locks Changed & Upgraded (To BS3621)

Free Estimates

Discount for Senior Citizens

Have you just moved?

Who else has a set of your keys?

For peace of mind do you need your locks changed?

Do your locks comply with your home insurance?

Friendly female staff

Lock outs, Break ins, all makes of locks

07780 840462

"Store this number on your phone,
you never know when you will need it"

PAINTER & DECORATOR

Interior/Exterior
Fully Insured - Reliable

for a free estimate please call

Steve Dartnell

07707806920
stevedartnell84@gmail.com



Woodstock Construction

Kitchens Bathrooms
General Building

We specialise in Kitchen & Bathroom
refurbishment.

Liaising closely with our Clients to
obtain the best possible results.

Over 35 years experience.

Call David for a free survey or further
information.

Mobile: 07961123054
Email: Woodstockcons@gmail.com



Plumpton & East Chiltington Wildlife

Year of the bird: May

The Dawn and Dusk Chorus is currently ramping up towards its crescendo around mid May. Birdsong is more noticeable at this time of the year as the birds are singing their heads off to attract a mate and defend their breeding territories. By the end of May the chorus gradually drops off. Apparently one bird singing will encourage other birds to sing even when they are of a different species. At 5am this morning the gauntlet was laid down by a wren and quickly picked up by a song thrush before all the others happily joined in. It definitely sounds like they are enjoying themselves. The first Sunday in May is International Dawn Chorus Day and the Wildlife Group will be holding a downland walk from Odintune Cottage on May 5th regardless of the weather, setting off at 5am with bacon sandwich rewards afterwards for the quietest attendees. Dogs also welcome. Just so we have an idea of numbers, please email jamesotway@hotmail.co.uk if you are intending to come.

At the time of writing this in mid April I can hear a skylark marking a territory over the newly established wild bird and insect conservation grassland that has been sown on some of the arable fields at Hackmans Farm. The skylark plot was established last spring and two further adjacent fields were established last Autumn. The mixture of flowers and herbal lays are planted as part of a Government scheme that pays farmers to protect and improve the land they manage. By providing insect life with a mixture of different flowering food sources throughout the year you provide a foundation for a healthy food

pyramid with benefits for the creatures up and down the food chain whilst improving soil quality/structure and natural fertility for future cropping. There has been a flock of 40 linnets on the new lays through the winter and with some bare ground that isn't a machinery tram line to nest on the skylarks may manage to hatch a clutch of eggs.

By the time you read this, swifts will have arrived back in the UK having returned from wintering over the Congo and Angola. By kind permission of the PCC, the Wildlife Group are extending the swift calling Project, which has been running for successive years during May/June in the All Saints Church tower, to include the tower at East Chiltington Church. By playing a digital recording of swift calls through a small speaker placed in both towers we hope to encourage these amazing birds back to nest. If you are interested in more information about swifts locally, visit the Lewes Swift Supporters website and join in with the Swift Watch 2024.

I would like to direct you towards some interesting new and old information that has been painstakingly collated by Chris Chapman on the group website plumptonwildlifegroup.weebly.com. Chris has taken the lists of species recorded in Plumpton and East Chiltington held by the Sussex Biological Records Centre and added them to the website on the "Species list" pages. From lichens and linnets to lizards it is a great resource of data that we can all continue to add to. Currently we are counting the rook nests in the parishes rookeries before the leaves on the trees fully emerge. We would be particularly interested to hear about nesting house martins, swallows and skylarks in the Parishes this summer. The Group will also be organising nightingale, nightjar and bat walks along with some more delicious moth breakfasts – watch this space.

James Otway

C. LEWRY GROUNDWORKS

- DRIVEWAYS, PATIOS & PATHS
- FENCING
- FOOTINGS & CONCRETE BASES
- DRAINAGE
- TURFING / LANDSCAPING
- DIGGERS + OPERATOR HIRE

Over 25 years experience + based in
Plumpton Green

FULLY INSURED

Contact Chris for a free quote

07854 787 545

chrislewry1980@yahoo.com

CHARLES WYCHERLEY

INDEPENDENT ESTATE AGENTS

56 High Street, Lewes
01273 069006 or 07912 935889
Email: office@charleswycherley.co.uk
Living locally in the East Chiltington/Plumpton
area.

Competitive rates for locals
Estate Agent and Chartered Surveyor



Ladybirds Playgroup



Come and join in the fun on Wednesdays!



Babies, toddlers and pre-school children all welcome at
this community run playgroup.
A lovely way to meet local people in a relaxed, friendly
atmosphere.

Plumpton Village Hall

Wednesdays (Term Time) 9.30 to 11.30am
£2.50 per family (first session is free)
ladybirdsplumpton@gmail.com

Angelo Spadaccini

Oil fired boiler and Aqa service engineer

01403 741600

Fully experienced and insured

Info : www.facebook.com/angeloilfired



LEE'S LOCKS

NO CALL OUT CHARGE!

All locks fitted to insurance BS3621

Window Locks • Supplied & Fitted
Fully Guaranteed • O.A.P. Discounts
Insurance Work • UPVC Specialist
Digital Locks • Break ins
Garage Door • UPVC/Patio
Police Checked • No VAT!!!



**LOCKED OUT? DOOR JAMMED?
LOST KEYS? NEED EXTRA SECURITY?**

*Store this number in your
phone NOW! You may need it*

Tel: 01273 803 084

Mob: 07921 068564

Email: lee@lees-locks.com

FREE
PHONE **0800 44 88 147** Always



Checktrade
Before you use them



ELECTRICIAN

DEAN FERGUSON
YOUR LOCAL CHAILEY BASED

OVER 30 YEARS EXPERIENCE

Registered with NAPIT to certify to part P

No job too big, no job too small (labour VAT Free)

Tel: 01825 723661

MOB: 07754000147

Email: deanfergusonelectrician@hotmail.co.uk



ATKINSON PLUMBING & HEATING Ltd



07973 550114 01825 791232



- Kitchens & bathrooms
- General refurbishment
- Carpentry service available
- Woodburners
- Boiler installation/ servicing
- Central Heating

We cover West Sussex & surrounding areas

Our customers have rated us 10 for Workmanship and Courtesy on

Checkatrade.com
Where reputation matters

PAY LESS TAX

Formerly with the world's largest accountancy firm for many years, I am now available freelance, to deal with all tax/accountancy matters, at a fraction of company rates. Ring for a free meeting.

LAWRENCE FLOWERS

School House
Plumpton Green, Lewes BN7 3DP
Tel: 01273 891505
Email lawrie8f@gmail.com

Advertise Here !!

Contact
pecntreasurer@btinternet.com

Or

Phone
01273 891427

REFLEXOLOGY

Auricular acupuncture

RESTORATIVE FACIALS

Natural non-toxic manicures

AROMATHERAPY

Hot stone neck, head massage

EYELASH TINT, BROW THREADING

Skin products, face enhancing

YOUTHFUL FACIAL ACUPUNCTURE

Ear seeds - Acupressure release

STEPHANIE SLADE

Stephanie

07835 927868

stephanieslade.co.uk

pomme@theFirs Beresford Lane, Plumpton, BN8 4EN



honeybees
PRESCHOOL

Community run Preschool in the heart of Plumpton Green

Ages from 2 to 5

Flexible hours available between
8.30 - 3.30 Monday to Friday

Now offering 30 hours funded childcare

OFSTED rated 'GOOD'

The Pavilion, King George V Playing Field,
Plumpton Green, Lewes, East Sussex BN7 3PD

Email hello@honeybeespreschool.co.uk
or phone 07786 615686

Find out more at www.honeybeespreschool.co.uk



simon cooper

scoopsweb
web solutions

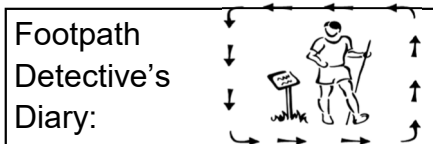
Plumpton-based web designer

tel: 07870 570050

email: simon@scoopsweb.co.uk

web: www.scoopsweb.co.uk

For all your website and
digital marketing needs



A Footpath Detectives Diary May 2024

The High Weald around Staplefield

I saw this walk in Sussex Life and thought I'd give it a try for a bit of variety. It is supposed to be 4.5 miles but I'd strongly recommend taking an O/S map of the area and concentrating. I did the walk with a friend and there was one bit where we took a wrong turn.

We set out from the village green and at a telephone box set back a little from the road (B2114) took a footpath / driveway to head north passing some dwellings on our right. This path is The Sussex Ouse Valley Way, although I don't recall it being very well signed as such. About 1km along the path we cross a bridge over a little stream and keep right at a path sign.

The track forks at the sign for Allen's Farm and there our route turned right. Only a little further on we turned right again up a few steps and through a gate. The path went along the short edge of a small field and through another gate to stay straight ahead on the north edge of a larger grazing field. Part way along we turned left through another gate with a footpath marker and continued along the edge of this field with the hedge on our left. At the corner of the field was another marker post and we turned right to head to a wood called Sole's Coppice.

At the edge of Sole's Coppice was another marker post and we turned left through a gate to walk along a path in the wood. This path curved right and descended a little to a footbridge that we used to cross a stream and continued north along the bank above the stream. As the path came out of the coppice we approached the timber framed Old Jarretts Farm House. The path passes to the north of the farmhouse and becomes a driveway.

Just after passing Old Jarretts Farm to our right was Ditton Place on our left. It is a large red brick house with a grey roof and central arch in the roof. It was built in 1904 for the

then owner of Prudential Insurance. The many white framed windows in the roof are of two dormitories that are said to have housed the owner's cricket team. Like many large homes of this type it was used in the second world war to as accommodation for Canadian soldiers. It now appears to be residential apartments.

Our path continued east along the driveway to the lodge house at Brantridge Lane. We crossed the lane to continue on a footpath (at this point it is part of the High Weald walk) heading NE. At a wooden marker post we followed the path to descend in a wood and down some steps to cross a bridge over a stream and then up some more steps. At the top of these a marker post directed us left to ascend a little way and then at the next marker the path veered right.

All was going well and of course we made the fateful mistake of saying how well we were following the route but from here its "several fields at the edge of a wood" territory. We crossed a stile into grazing land and walked on the edge with Bury Wood to our left, this is three fields worth. At a high point is a sign to go through a gate to head north on rising ground, don't take it unless you'd like a pleasant detour to Balcombe. Stay in the fields on a less clear path to head east and gradually SE. The views south towards the Downs are lovely at this point and perhaps that added to the distraction that caused us to head off course.

The path descends to a stile and it can be a little muddy at this point. A waymarker at the end of the copse that directed us diagonally across the middle of the field. There is a pond surrounded by trees that we stayed to the right of. We passed a sign and then through a gate. The path was then at the edge of a wood and soon we were at a white house. We took a left turn at the next gate and footpath post heading south onto a driveway and here were more lovely views over the Weald.

The path took a right turn to head WSW on an asphalt drive to lead us to Brantridge Lane. We turned left onto the lane to continue south passing Old Hall. The lane is narrow and usually quite quiet. In the dip it bends right to lead west to St Mark's Church that has wall paintings by Charles Eamer Kempe. Continuing on the lane we are soon back in Staplefield where there are a couple of popular pubs for refreshments.

EJH



Bird Watch

There has been a Long-tailed tit carrying nesting material into a hedge close to here. These busy little birds, weighing only about eight grams, take two or three weeks constructing one of the best nests you will ever see. When completed, often before the leaves come, it can appear as a lichen covered stump of wood in the bush, so well decorated and camouflaged it is. It is a tall nest with the entrance high on the side away from the prevailing wind. Studies of this species, when examining nests at the end of the season, have found that over a thousand feathers have been collected and used to line it. Being of the Tit family, it is only single brooded, therefore laying just one large clutch of eggs so that they all hatch together when the defoliating caterpillars are plentiful. A wonderful feature of the nest is, that they use spiders' webs to bind the nest. This gives it an elastic quality so when up to a dozen young are nearing full growth, the nest will not split.

Later in the year, they are found in flocks that keep together offering each other many eyes to seek out a food supply or spot an approaching predator. They are easily recognised, looking like flying lollipops and having a flat twittering call. Surprisingly, they are quite mobile and ringing has shown quite long movements within the country and three from Belgium. Last month one was controlled by a ringer in West Sussex that had been ringed last autumn in a reserve in West Dorset, just this side of the Devon border.

Other species will have two or three breeding attempts, spreading the

risk of failure and build nests into July. Over this period they require soft material on which to lay the eggs. Feathers, hair and sheep's wool are ideal and plentiful in the countryside. When cattle are outwintered, they grow a protective coat that in spring must be shed. This is just what birds need and it is common to see Jackdaws on the backs of cattle tugging out great beakfuls. When grooming your pet or even having a home haircut, put out the waste where the birds can find it. This not only assists them but gives you the opportunity to see where they fly and find the location of the nest.

I know I frequently write about ringing birds and for this make no apology. It is the way that the truth about individuals is found. Of course the most exciting times are when one of the birds you have ringing is found in another country or a migrating bird returning to breed here in subsequent years. There are other valuable statistics found. If a bird is found dead, the cause of death is reported. Some hit windows, others are killed by traffic or cats and some predated. All this information is analysed. Another fact found is how long an individual bird lives. We recently recaptured a female Chaffinch that had been ringed as an adult of at least two years old in April 2018 so the youngest it could be is eight years and not showing any sign of "bumblefoot", a scaly condition of the feet and legs that affects Chaffinches, making it difficult for them to walk and perch as they get older.

R.J.L.

A. C. TAX SERVICES

ACCOUNTANCY
& TAXATION SERVICES
Kelvin Speirs

Fyndings, Station Road
Plumpton Green
Lewes BN7 3BX Tel: 01273 890785
Email: kelvinspeirs60@gmail.com



GOAT GRID



AGROFORESTRY

**Food Forest and Agroforestry
Consultation, Design and Planting.
Wide range of trees, shrubs and herbs
available for winter.**

CASPARDICKINSON@ME.COM +447527305939

INSTAGRAM : GOATGRID

Therapeutic Yoga - 1:1 tuition

20+ years experience

Movement and Stillness for body and mind for people living with

Learning and Physical Differences

Neurological Conditions

Dementia

Frailty

*For more details contact Amber
07795 170803 / ambertheward@hotmail.com*



Traditional & Power Sweeping
Tel. 01273 858568 Mob. 07889 485832
Fully insured Friendly & Reliable

GUMTREE 4x4 Ltd

01444 241457

Unit 17
Ditchling Common
Industrial Estate



**Land Rover, Range Rover, Discovery
and 4x4 Specialists.**

*MOT testing, servicing and repairs.
Recovery, collection and delivery service available.*

**A.M
Appliances**

- Washing Machine Repairs
- Dishwasher Repairs
- Electric Cooker Repairs
- Tumble Dryer Repairs
- Spare Parts

Domestic Appliance Repairs 

Allan Mansfield

01273 890917  www.amappliances.co.uk

01444 391112  service@amappliances.co.uk

  Find us on facebook 

MPS Electrics

For all your electrical needs

Local Electrician
Fully qualified/insured

Contact Marcus on


Tel: 01273 525545
Mob: 07546505447
email: mpselectrics@gmail.com



Proud members of

Checkatrade.com
Where reputation matters

ROBERT BRADSHAW
CARPENTER / JOINER



25 YEARS EXPERIENCE

Newick

Purpose-made Wardrobes •
Doors / Architraves •
Cupboards / Shelving •
Kitchens •
Property Maintenance •

Mobile: 07811 224400
Email: robcbad@gmail.com

COME AND JOIN US
AT YOUR LOCAL, FAMILY FRIENDLY
TENNIS CLUB

- LTA QUALIFIED COACHES
- ADULT/JUNIOR COACHING
SATURDAY SESSIONS FOR JUNIORS OF ALL AGES
- CLUB NIGHTS/RUSTY RACQUETS/TEAM PLAY
- CHILDRENS' EASTER & SUMMER CAMPS
- JOIN IN WITH OUR COACH RUN CARDIO
SESSIONS A GREAT WAY TO KEEP FIT
- AWARD WINNING CLUBHOUSE
- FLOODLIGHTS





WANT TO KNOW MORE?
CALL LESLEY SATCHELL ON: 07590 354420
OR EMAIL: info@plumptontc.org.uk

A.CHRISTIE

Plumpton Property
Maintenance Services

a.christie@btinternet.com
07775 911409

12 Southdowns, Plumpton Green.
BN7 3EB

Garden maintenance



Phillip 07812 364395
Professional, Experienced, Reliable



Chailey Commons Society

www.chaileyccommons.org.uk

The commons are breaking out of the winter shadows with lovely fresh green growth in many shades across the vistas. The rain has continued to fall resulting in the paths remaining soggy and unsuitable in some areas but, with the longer days and warm sunshine, things should improve.

Wildlife refuges: we have set out some advisory refuge boundaries, with one again on Red House Common encompassing the east side of the north slope as before, and two on Memorial Common of which one is a new one taking in the large central area of this common. The area to the west side is set up again as this contains valuable and suitable habitat for the nesting birds. We always recognise that some of our heathland areas are known to be important for ground nesting birds such as Nightjar, and these can be disturbed by walkers and dogs off the main paths. Please look out for any wildlife refuge areas marked out between March and July. Public rights of way will not be affected, and fortunately, there are many established paths across the commons. Your help will be appreciated.

Over the Easter holidays we joined the St Peter's School PTA who set up an Easter Trail with clues displayed around Memorial Common and a crafts afternoon based in the Sports Pavilion. The Windmill was open for an hour as well thanks to the Friends of the Windmill.

The moon will be a full moon on Thursday 23rd May and is called the Flower Moon. The name is given because it coincides with the time of the year when spring flowers are in abundant bloom.

For gardeners sowing seeds the New Moon is on Wednesday 8th May. It's said that seeds will absorb more water during the new Moon phase when more moisture is pulled to the soil surface. This causes seeds to swell, resulting in greater germination and better-established plants.

Our meetings continue this month with an evening walk which we are calling a Night-time Safari. We will meet on Tuesday May 28th at Pound Common car park at 8.30.p.m. and explore this common as night falls and look and listen. As dusk falls hopefully we'll enjoy birdsong such as the Song Thrush, Blackbird and maybe the early arrivals of the Nightjar. We will also have our bat detector for checking the flight of these tiny creatures. Bookings in the usual way as numbers are limited.

For further information, visit our website – www.chaileyccommons.org.uk or our Facebook page www.facebook.com/chaileyccommons/ or friendsofmarkstakescommon.weebly.com

William Coleman
01444 831098



Lewes District Citizens Advice

15 – 19 Chapel Street
Newhaven
BN9 9PN
@Lewescab1

www.lewesdistrictca.org.uk

Contact : Sophie Hoffman 01273 007556

We've booked a summer holiday abroad. What can we do to protect ourselves and prepare for the unexpected?

Firstly, check if your passport is in date and bear in mind that renewal can take several weeks. Check the validity of your passport for your trip on GOV.UK by seeing the entry requirements of the country you're travelling to (1)

If your flight is delayed long enough, your airline has to give you access to food and drink vouchers and, if you're delayed overnight, accommodation. If your flight is cancelled, you have a legal right to a full refund or replacement flight to help you get to your destination (2)

You have a right to compensation if your airline delays, loses or damages your checked-in luggage. The Citizens Advice website shows you how to do this (3)

You might also get compensation for other issues, like a day trip getting cancelled, or if you paid for a deluxe room but only got a standard one. This will depend on whether you booked a package holiday, made 'linked travel arrangements' or organised the trip independently, so it's worth checking to see what compensation you can get (4)

Finally, travel insurance is important. Check to see if you're covered for what you need through an existing insurance policy or through your bank account.

Hopefully you won't face any problems but if something goes wrong and you need advice call us on 0808 278 7892

1 <https://www.gov.uk/foreign-travel-advice>

2 <https://www.citizensadvice.org.uk/consumer/holiday-cancellations-and-compensation/if-your-flights-delayed-or-cancelled/>

3 <https://www.citizensadvice.org.uk/consumer/holiday-cancellations-and-compensation/get-airline-compensation-for-lost-or-delayed-luggage/>

4 <https://www.citizensadvice.org.uk/consumer/holiday-cancellations-and-compensation/claim-compensation-for-a-holiday/>

EAST CHILTINGTON



Societies

Clubs

Groups

For changes or new entries:

phone:

01273 891427

Email:

pecncopy@gmail.com

Baby & Toddler Group	Charlotte	01273 891086
British Legion	Reg Lanaway	890070
Brownies	girlguiding.org.uk	
Chailey Commons Society	William Coleman	01444 831923
Cricket Club	Kelvin Speirs	890785
Flower Club	Sue Akers	891701
Football Club	Paul Manville	07813 114470
Footpath Society	Judy Lawrenson	01273 472277
Guides	girlguiding.org.uk	
Happy Circle	Cherie Winchester	891592
Honeybees Preschool		07786 615686
Horticultural Society	Lin Pilfold	01273 475594
Hospice Support Group	Sue Akers	891701
Junior Football	Darryl Bailey	07792 686673
Oil Buying Group	Diane Marks	07929 336065
Pantomime Society	Penny Acton	01273 891427
Plumpton Activity Scheme	Becca Baker	
	plumptonactivityscheme@gmail.com	
Plumpton Bowmen	Mark Piercy	07799 467997
Plumpton Camera Club	Tim Honess	01273 890582
Plumpton & East Chiltington		07478 524152
Good Neighbours	Gina Hawthorne	
Plumpton Rude Mechanical	Lee Stevens	07887 562721
Theatre Co. Friends		
Plumpton Short Mat Bowls	Malcolm Beard	890826
Plumpton Tennis Club	Lesley Satchell	07590 354420
Plumpton Village Society	Lee Stevens	07887 562721
PPTFA	Marie Leviston	891497
Plumpton Vol Driving	Gill Medhurst	01273 890055
	Bookings - Jackie	07855213947
Rainbows	girlguiding.org.uk	
Rugby Club	Mike Allen	890076
Scouts	Rodney Hills	890410
Southdown East Pony Club	Mike Nichols	01444 452295
Stoolball Club	Jo Taylor	890450
Turning Pointe Dance Classes	office.turningpointe@gmail.com	
Wildlife Group	Kate Gold	
	plumptonwildlife@gmail.com	

Plumpton & East Chiltington News

Advertising & Admin: Barry Luck

Email: pecntreasurer@btinternet.com 01273 891 427

Typesetting:

Penny Acton

Email: pecncopy@gmail.com 01273 891 427

Distributed by:

Christine Millum 01273 890854

Printed By;

Devon Print Ltd. 077955 66066

**citizens
advice**

**Lewes
District**

Freephone Adviceline

Tuesdays - Thursdays 10am-3pm

0808 278 7892

**Free, confidential, impartial
information and advice about:**

- **Cost of Living support**
- **Benefits**
- **Debt**
- **Housing**
- **Employment**
- **Consumer**

...and much more



www.lewesdistrictca.org.uk