

NOTES
 SURVEY IS BASED ON OS GRID SYSTEM
 ORIGINATING FROM STATION 1
 @ E 536476.196, N 116130.883, RL 33.567

Every effort has been made to survey the area as indicated. Where detail is inaccessible or obscured from view it has been deemed unable to survey.

LAYER INFORMATION

| | | | |
|----|----------------------------|------------------------------------|------------------------------------|
| 0 | Blank | EMPTY | Overhead cables |
| 1 | Top of bank | Downed bank arrow | Downed bank arrow |
| 2 | Building Lines | Building line | Building line |
| 3 | Rooflines | Roofline | Roofline |
| 4 | Edge of Concrete | Edge of concrete surface | Edge of concrete surface |
| 5 | Edge of Road | Edge of road surface | Edge of road surface |
| 6 | Footpath | Footpath | Footpath |
| 7 | Edge of Surface / Footpath | Edge of surface or surface changes | Edge of surface or surface changes |
| 8 | Edge of Road | Edge of road surface | Edge of road surface |
| 9 | Edge of Concrete | Edge of concrete surface | Edge of concrete surface |
| 10 | Top of bank | Top of bank | Top of bank |
| 11 | Bottom of bank | Bottom of bank | Bottom of bank |
| 12 | Fence / Handrail | Fence / Handrail | Fence / Handrail |
| 13 | Overhead Cables | Overhead cables | Overhead cables |

Line types and Symbols

| | | | |
|--------------------|--------|----------------------------|------------------|
| Building Lines | 100.40 | Garden Line | Scrub Line |
| Rooflines | 100.40 | Gullies / Waste Water | Man holes & Flow |
| Top & Back of Kerb | 100.40 | Edge of Surface / Footpath | Trees |
| Edge of Road | 100.40 | Edge of Road | Spot Levels |
| Edge of Concrete | 100.40 | Top of bank | |
| Bottom of bank | 100.40 | Bottom of bank | |
| Fence / Handrail | | Fence / Handrail | |
| Overhead Cables | | Overhead Cables | |

Control Stations

| Point Number | Easting | Northing | Elevation | Description |
|--------------|------------|------------|-----------|-------------|
| SW1 | 536476.196 | 116130.883 | 33.567 | HELVIA/L |
| SW2 | 536476.196 | 116130.883 | 33.567 | HELVIA/L |
| SW3 | 536476.196 | 116130.883 | 33.567 | HELVIA/L |

Orientation

North

Rev. Date Description

| Rev. | Date | Description |
|------|------|-------------|
| | | |

Client

Pottinger Design Engineering Ltd

Drawing Title

Topographical Survey Layout

Scale

Not to Scale

Date

16/07/24

Drawn

DH/CH

Checked

SE

Job No.

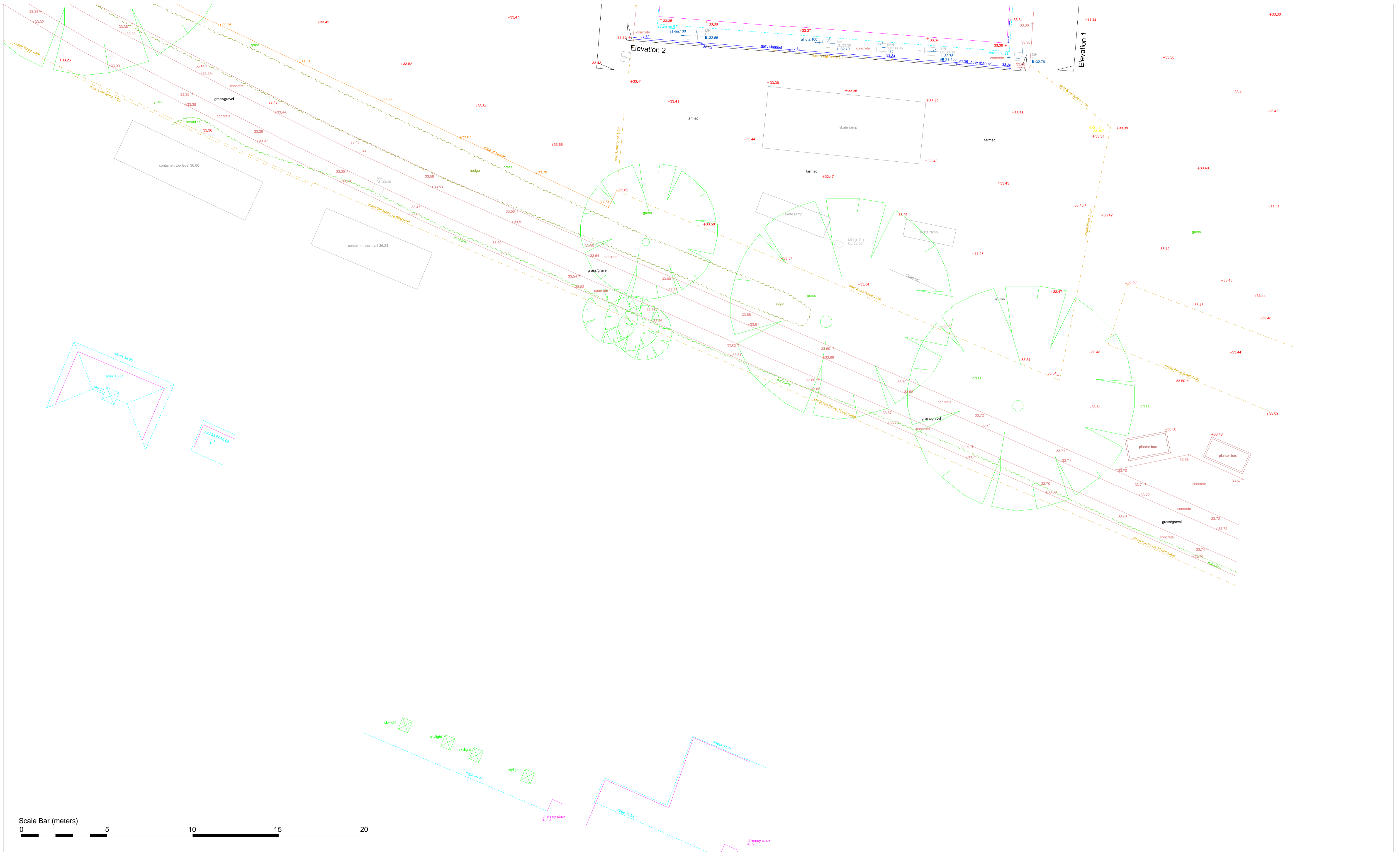
001 07 24

Drawing No.

Layout

Rev.

-



NOTES
 SURVEY IS BASED ON OS GRID SYSTEM
 ORIGINATING FROM STATION 1
 @ E 536476.196, N 116130.883, RL 33.567

Every effort has been made to survey the area as indicated. Where detail is inaccessible or obscured from view it has been deemed unable to survey.

LAYER INFORMATION

| | |
|-----------------------|--|
| Blank | EMPTTY |
| Blank of Bank | Downed items arrows |
| Boundary Lines | Boundary to kerb / edge |
| Edge of Concrete | Top surface and parapets |
| Edge of Road Surface | Bedding surface |
| Ground Level | Ground level |
| Footprint | Boundary, fence and boundary lines |
| Fence | Walls and kerb |
| Footing | Edge of footpath or surface changes |
| Footpath | Edge of kerb / gutter |
| Grass | Edge of grass / lawn |
| Gully | Gully |
| Hedge | Edge of hedge |
| Handrail | Point locations |
| Lane Light | Lane posts and lighting |
| Overhead Cables | Overhead cables and utility poles |
| Plant | Significant vegetation and natural plant |
| Road Markings | Significant road markings |
| Scrubline | Edge of scrub, bank and utility lines |
| Skylight | Edge of skylight or skylight frame |
| Sign Post | Sign posts and street signs |
| Skidwheels | Point elevations |
| Skidwheels text | Point elevations text |
| Survey Station | Control stations |
| Top and Back of Kerb | Top and back line of kerb |
| Tree | Tree |
| Tree | Tree |
| Underground Structure | Underground structures |
| Wall | Walls |

Line types and Symbols

| | | | | | |
|----------------------------|--------|-----------------------|--|---------------|----------------|
| Building Lines | 100.40 | Garden Line | | Road Markings | |
| Rooflines | 100.40 | Scrub Line | | Hedge Line | |
| Top & Back of Kerb | 100.40 | Gullies / Waste Water | | Walls | Pier ht 100.40 |
| Edge of Surface / Footpath | 100.40 | Man holes & Flow | | Steps | |
| Edge of Concrete | 100.40 | Trees | | Plant | Plant |
| Top of bank | 100.40 | Spot Levels | | Gates | |
| Bottom of bank | 100.40 | | | | |
| Fence / Handrail | | | | | |
| Overhead Cables | | | | | |

Control Stations

| Point Number | Easting | Northing | Elevation | Description |
|--------------|------------|------------|-----------|-------------|
| SM | 536476.196 | 116130.883 | 33.567 | HELVNAIL |
| SMP | 536496.119 | 116077.582 | 33.249 | HELVNAIL |
| SPC | 536572.204 | 116105.726 | 33.267 | HELVNAIL |

Orientation

| Rev. | Date | Description |
|------|------|-------------|
| | | |

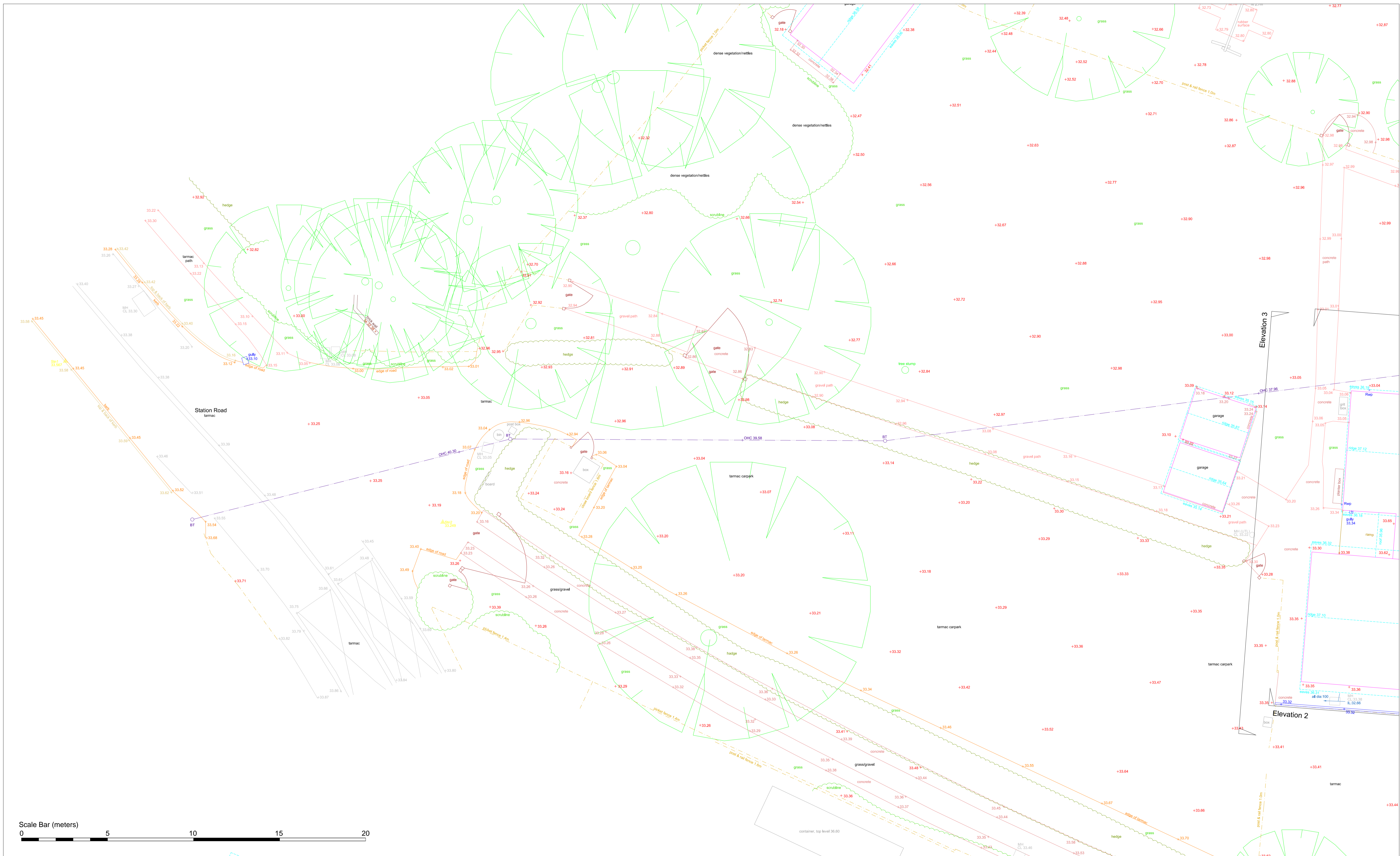
Client: Pottinger Design Engineering Ltd

Drawing Title: Topographical Survey P3/4

Scale: 1:100 @ A1 | Date: 16/07/24 | Drawn: DH/CH | Surveyed by: AR | Checked: SE

Job Title: Plumpton Pavilion, Plumpton Green, Lewes, BN7 3BW

Job No: 001 07 24 | Drawing No: 003 | Rev: -



NOTES
 SURVEY IS BASED ON OS GRID SYSTEM
 ORIGINATING FROM STATION 1
 @ E 536476.196, N 116130.883, RL 33.567

Every effort has been made to survey the area as indicated. Where detail is inaccessible or obscured from view it has been deemed unable to survey.

LAYER INFORMATION

| | |
|-----------------------|---|
| Bank | EMTRY |
| Bottom of Bank | Downed bank arrows |
| Boundary Lines | Boundary lines |
| Edge of Concrete | Edge of concrete surface |
| Edge of Road | Edge of road surface |
| Excavation | Excavation |
| Fence | Guaranteed, fence and boundary lines |
| Footpath | Water surface |
| Gully | Edge of footpath or surface change |
| Hedge | Edge of bank (Green Bank) and grass surface changes |
| Manhole | Manhole |
| Overhead Cables | Overhead cables and utility poles |
| Road Markings | Significant road markings |
| Scrubline | Scrubline |
| Sign Post | Sign posts and street signs |
| Spot Levels | Spot elevations |
| Top and Back of Kerb | Top and back line of kerb |
| Tree | Tree |
| Unexcavated Structure | Unexcavated structure |
| Wall | Wall |

Line types and Symbols

| | |
|----------------------------|--------|
| Building Lines | 100.40 |
| Rooflines | 100.40 |
| Top & Back of Kerb | 100.40 |
| Edge of Surface / Footpath | 100.40 |
| Edge of Road | 100.40 |
| Edge of Concrete | 100.40 |
| Top of bank | 100.40 |
| Bottom of bank | 100.40 |
| Fence / Handrail | 100.40 |
| Overhead Cables | 100.40 |

Garden Line

Scrub Line

Gullies / Waste Water

Man holes & Flow

Trees

Spot Levels

Road Markings

Hedge Line

Walls

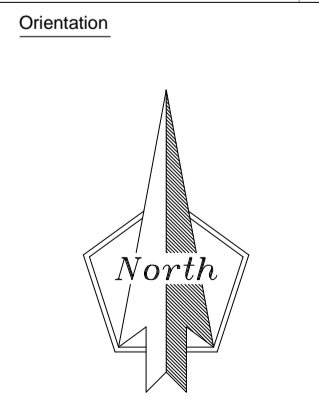
Steps

Plant

Gates

Control Stations

| Point Number | Easting | Northing | Reduced | Description |
|--------------|------------|------------|---------|-------------|
| SM | 536476.196 | 116130.883 | 33.567 | HELVIAIL |
| SP | 536476.196 | 116130.883 | 33.567 | HELVIAIL |
| SP3 | 536573.204 | 116105.726 | 33.367 | HELVIAIL |



| Rev. | Date | Description |
|------|------|-------------|
| | | |

Client
 Pottinger Design Engineering Ltd

Drawing Title
 Topographical Survey P4/4

Scale
 1:100 @ A1

Date
 16/07/24

Drawn
 DH/CH

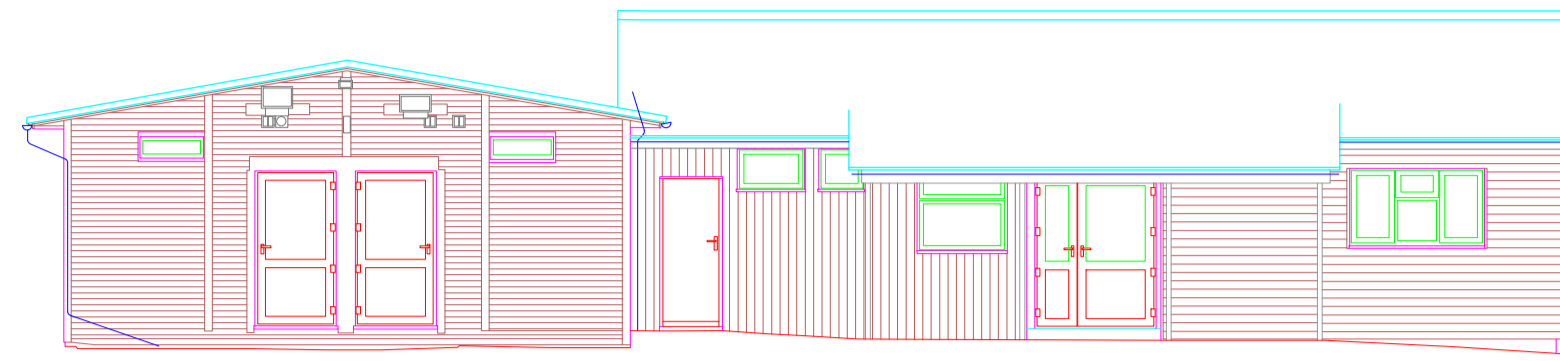
Checked
 SE

Job No.
 001 07 24

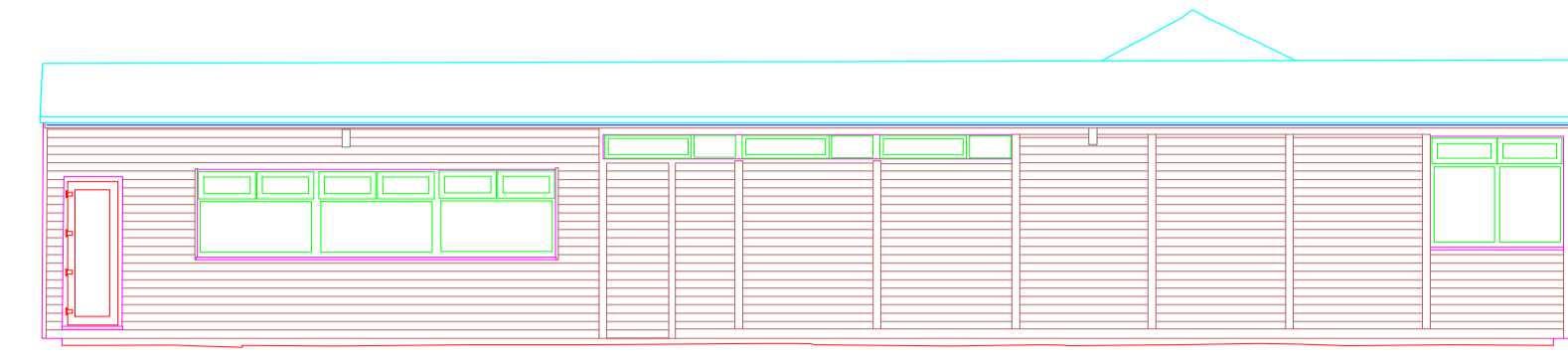
Drawing No.
 004

Rev.
 -

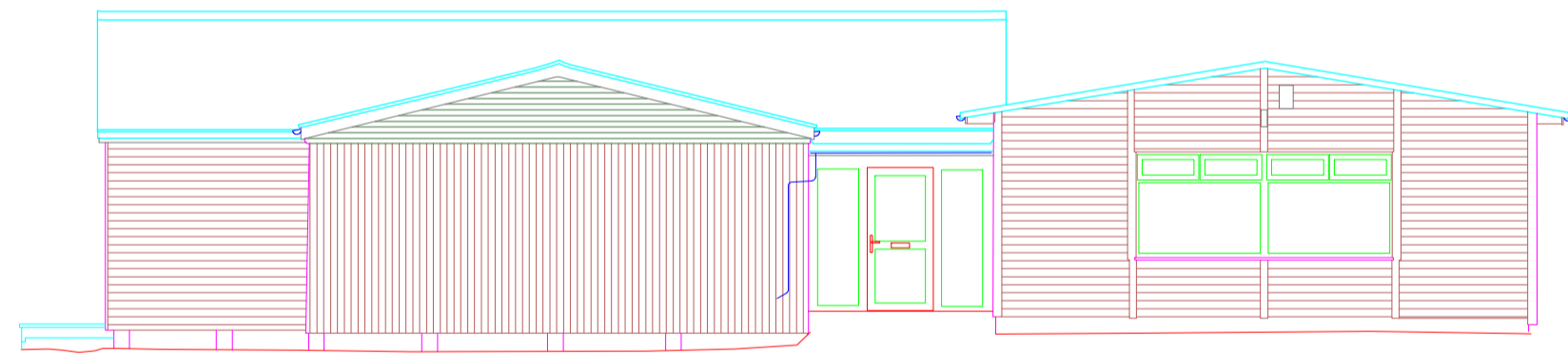
Job Title
 Plumpton Pavilion, Plumpton Green, Lewes, BN7 3BW



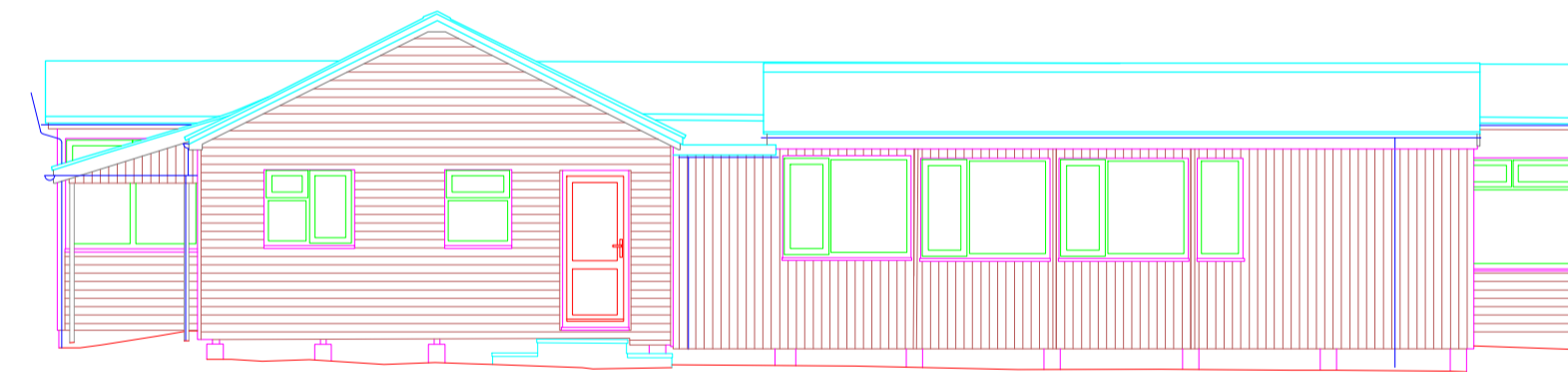
Elevation 1



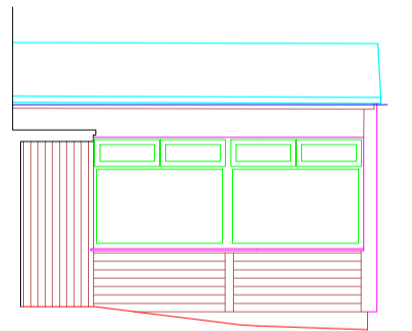
Elevation 2



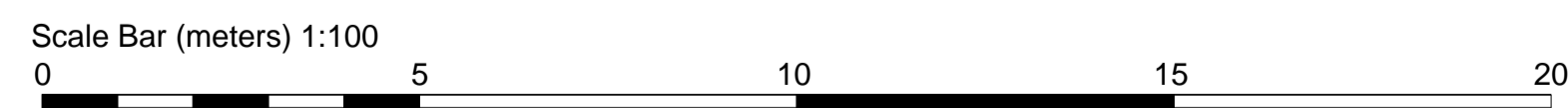
Elevation 3



Elevation 4



Elevation 5



NOTES
SURVEY IS BASED ON OS GRID SYSTEM
ORIGINATING FROM STATION 1
@ E 536476.196, N 116130.883, RL 33.567
Every effort has been made to survey the area as indicated. Where detail is inaccessible or obscured from view it has been deemed unable to survey.

LAYER INFORMATION

| | | |
|----|-----------|--|
| 0 | Beam | EMPTY |
| 1 | Rooflines | Overhead beams, posts, roof elements etc. |
| 2 | Roofing | Overhead lighting, gutters |
| 3 | Doors | Door and window frames |
| 4 | Furniture | Fence and fence lines |
| 5 | Gully | Plant furniture |
| 6 | Roofing | Change and water meter gullies |
| 7 | Roofing | Cable |
| 8 | Roofing | Change of roof materials |
| 9 | Roofing | Plant furniture |
| 10 | Roofing | Roof structures and frames |
| 11 | Roofing | Metal structures |
| 12 | Roofing | Roof structures |
| 13 | Roofing | Significance resolution and plant installation |
| 14 | Roofing | Plant structures |
| 15 | Roofing | Roofing, pipes, hips and valley lines |
| 16 | Roofing | Plant furniture |
| 17 | Roofing | Plant furniture |
| 18 | Roofing | Plant furniture |
| 19 | Roofing | Plant furniture |
| 20 | Roofing | Plant furniture |
| 21 | Roofing | Plant furniture |
| 22 | Roofing | Plant furniture |
| 23 | Roofing | Plant furniture |
| 24 | Roofing | Plant furniture |
| 25 | Roofing | Plant furniture |

Line types and Symbols

| | |
|------------------|--------|
| Building Lines | 100.40 |
| Wall Lines | |
| Wall Hatching | |
| Furniture | |
| Kitchen Fixtures | |
| Plant | |
| Gully | |
| Fence | |
| Steps | |

| | | | |
|-----------|-----------------------|---------------------|--------------------------|
| Metal | | Soffit | |
| Spotlevel | | Beams | |
| Windows | Ch: 1.20 Pit: 1.50 | Skylights | Skylight |
| Doors | Dr: 1.90 | Ceiling Slope | Up Slope: 1.90 - 2.10 |
| Radiator | Rad | Plinths / Platforms | Plinth: 0.50 |
| Sanitary | | Stairs | DN |

Control Stations

Orientation

| Rev. | Date | Description |
|------|------|-------------|
| | | |

Client: Pottinger Design Engineering Ltd

Drawing Title: Elevations

Scale: 1:100 @ A1

Date: 16/07/24
Surveyed by: AR

Drawn: DH/CH
Checked: SE

SeSurveying

Job Title: Plumpton Pavilion, Plumpton Green, Lewes, BN7 3BW

Job No: 001 07 24

Drawing No: 005

Rev: -