

# Plumpton & East Chiltington News

November 2024



# Z. R. LANDSCAPES

Landscaping  
Fencing  
Hedge Cutting and Treework  
Turf Laying  
Driveways  
Patis  
And More

**Zac Robins**

**07949 220721**

landscape@nsza.co.uk

**CONTACT FOR A FREE ESTIMATE**

# HILLS

OF PLUMPTON

## DRIVER TRAINING CAR, LGV, PCV, FLT, HIAB

40 East View Fields  
Plumpton Green BN7 3EF  
Tel: 01273 890410  
www.hillsofplumpton.co.uk

## Eastwood Heating & Plumbing

Keep your energy bills low by making sure your boiler is serviced regularly. A well serviced boiler keeps your energy consumption low and can Identify faults early, avoiding expensive breakdown cost.

Plumpton Green based Heating Engineer  
for all Oil and Gas appliances

please call James on 07876 294262 or 01273 890526



104339 528262

## **Plumpton Stores & Post Office**

Your local village store is now open:

6.00am to 7.30pm Monday to Friday

7.00am to 7.00pm Saturday

7.00am to 1.00pm Sunday

8.00am to 1.00pm Bank Holidays

**01273 890229**

## *P.A. Brooks* SON

INDEPENDENT FAMILY FUNERAL SERVICES

Ravenoak, 46 Allington Road, Newick  
East Sussex, BN8 4NB  
Tel (01825) 722895 (By Appointment)  
35 Wivelsfield Road, Haywards Heath,  
West Sussex, RH16 4EN  
Tel (01444) 454391



FUNERAL PLANS FROM  
Golden Charter



info@brooksfunerals.co.uk | www.brooksfunerals.co.uk



## **RICHARD SOAN ROOFING SERVICES**

Flat & Pitched Roofing

Award Winning • Domestic • Heritage • Commercial • Education • Industrial

All advice free and without obligation

**Tel: 01273 486110**

Email: [enquiries@richardsoan.co.uk](mailto:enquiries@richardsoan.co.uk)

[www.richardsoan.co.uk](http://www.richardsoan.co.uk)



# PLUMPTON & EAST CHILTINGTON NEWS

## November 2024

Page

Plumpton Parish Council	2		
East Chiltington Parish Council	4		
Plumpton Flower Club	4	Plumpton School	19
James MacCleary MP	5	Plumpton Village Handbook	19
Sarah Osborne	5	Plumpton & East Chiltington Good Neighbours	19
Daniel Stewart-Roberts	7	November Crossword	20
DR's Diary	9	Chailey Repair Café	22
Station Partnersnip	9	Plumpton & East Chiltington Wildlife	24
Apple Day	10	Footpath Detective	27
Plumpton Festive Fair	12	Birds	28
Rev. Anne Dunlop	14	Chailey Commons Society	31
Church news	15	Citizen's Advice	32
Church Services	16	Clubs & Societies	33
Events Calendar	17		
Footpath Society	17		
Flower Club	18		
Arts Society	18		

## Happy Circle

Thursday 14th November

### Christmas Shopping

For more details contact:  
Cherie 01273891592

### Plumpton & East Chiltington News

Would you like to contribute to village life of Plumpton & East Chiltington?

This magazine is an essential part of our village life and needs to continue to be produced.

The Magazine committee is looking for a new Editor/Typesetter

If you would like to know more please contact Penny at  
[PECNCOPY@gmail.com](mailto:PECNCOPY@gmail.com)

### ***COPY DEADLINES***

***17th November for December  
8th December for January 2025***



**Copy to The Poplars, Station Road  
or email: [pecncopy@gmail.com](mailto:pecncopy@gmail.com) or Telephone: 01273 891 427**



**Plumpton Parish Council**

**[www.plumptonpc.co.uk](http://www.plumptonpc.co.uk)**

### PARISH COUNCILS – What do they do?

The Parish Council would like to hear from anyone who would like to join the existing 6 friendly members of the Parish Council and help out with the running of the village. The Council currently have a few projects on the go whilst simultaneously managing routine tasks that need to be done to ensure the smooth running of our community. Over the next few editions of this magazine, we will be giving examples of the issues and events that the Parish Council either have to attend to or want to do for the benefit of all residents.

Parish Councils are the first tier of local government. They exist to ensure that local voices are heard on critical issues, from planning and development to health and safety. To help Plumpton with this the Parish Council are members of the Lewes District Association of local councils (LDALC) and the East Sussex Association of Local Councils (ESALC). These groups can be a very useful conduit used to provide a collective voice to local and central government on any issue that impact the village. A recent example of this was the guidance ESALC issued to all members to help respond to the recent national planning policy framework consultation.

LDALC hold regular meetings and invite key officers in local government providing a platform for them to present and get feedback from councillors across the Lewes district. In June a meeting was held in Newhaven attended by Rupert Clubb, who heads up East Sussex County Council Highways Department, Ian Fitzpatrick, Deputy CEO at Lewes District Council, the Director of Regeneration of planning, Neil Collins, Head of Development and Simon Russel, Monitoring Officer. Issues concerning local transport, potholes, traffic calming and of course planning in the district were discussed. In September the meeting was held at the Police Commissioners Office in Lewes focusing on issues around rural crime. The Police and Crime Commissioner for Sussex, Katy Bourne and the Police Inspector

responsible for community policing were both present and open to questions from councillors.

If you want to contribute and have a say in how your village runs and engage with the community then why not sit on the Parish Council? Please contact our Clerk Anita Emery if interested.

[anita.emery@plumptonpc.co.uk](mailto:anita.emery@plumptonpc.co.uk)

The date of the next Parish Council meeting is **November 12th, 19:45hrs** at the Village Hall. Members of the public are welcome to attend.

## **Plumpton Flower Club**

We are pleased to welcome

**Gill Homer**

Who will be giving a demonstration  
entitled

**'Christmas Sparkle'**

On

**Wednesday 20th November**

At Plumpton Village Hall  
Commencing at 7.30pm

Members £3, Visitors £8  
Including mulled wine and mince pies

There will be a raffle at the end of the evening with a chance to win one of Gill's lovely floral arrangements.

For any enquiries please call Jo Hale on 07719887590 or Sue Akers on 07799095234



**Floral Art  
by  
Nichola Massingale**

Weddings  
Funerals  
Hospitality  
Special Occasions

Tel. 07970 462337

Email: [nichola@massingale.co.uk](mailto:nichola@massingale.co.uk)  
[www.plumptonflowers.co.uk](http://www.plumptonflowers.co.uk)

**Rupert Thacker**  
***Furniture Restoration Services***

*Including Furniture repairs, Polishing etc. of  
Antique, Contemporary, and Reproduction  
Furniture*

*Fletching, E Sussex, TN22 3TQ*

Tel : 01825-713111 (Workshop)  
Mobile: 07950-035044  
Email: [sales@rupert-thacker.com](mailto:sales@rupert-thacker.com)  
Website: [www.rupert-thacker.com](http://www.rupert-thacker.com)



- All aspects of tree work
- Hedge maintenance
- Planting
- Fruit tree pruning
- Traditional hedge laying
- Woodchip supplies

**Contact Oliver Marlow**  
**07507 523748 / 01273 891702**  
**[oliver@newleaffreesurgery.co.uk](mailto:oliver@newleaffreesurgery.co.uk)**

**[newleaffreesurgery.co.uk](http://newleaffreesurgery.co.uk)**

**A clean carpet isn't all we  
ServiceMaster Clean guarantee.....**

- Carpet Cleaning & Repairs, re tufting & reweaving
- Upholstery Cleaning
- Rug Cleaning including Wool & Silk
- Curtain Dry Cleaning on-site-at-the-window
- Carpet Moth Treatment Service
- Fire & Flood Clean-Up Service

Now celebrating 24 years of providing 1<sup>st</sup> class service in Plumpton, Plumpton Green, East Chiltington, Lewes & Brighton.

Call Paul or Liz on 01273 733339

For a free no-obligation quotation  
Or email [paul@servicemasterbrighton.co.uk](mailto:paul@servicemasterbrighton.co.uk)

See our website for special offers  
[www.servicemasterclean.co.uk/plumpton-green](http://www.servicemasterclean.co.uk/plumpton-green)

Treats by Post - Brownies - Gift Boxes  
Hand Painted Cookies - Cupcakes  
Celebration Cakes  
Wedding Cakes

**The Crafty Cake Lady**  
We Bake with Love

[www.thecraftycakelady.co.uk](http://www.thecraftycakelady.co.uk)  
FREE LOCAL DELIVERY  
07725979297 / 01273 891067




**The Greenhouse**

B&B in the heart of Plumpton Green

Separate annex, sleeps 4

Previously known as 'Edgington Cottage'

To book please call Clare

07747 036049



### **Update on the Eton Town development**

At our last Parish Council meeting we had an update from our district councillor, Daniel Stewart-Roberts on the current position of the Eton Town potential development. This is a summary:

With the new government in place, there has understandably been some uncertainty as to whether their new planning policy means the Eton Town proposed development will be looked on more favourably. The government has proposed a target of 1.5 million new homes over the next 5 years, which if achieved, would mean building 300,000 new homes per year. To put this in context, in 2022/23 212,570 homes were built throughout the UK.

However, as far as the Eton Town development site at North Barnes Farm is concerned there are a number of reasons to be re-assured that despite higher housing targets nationally, it remains unlikely to be a candidate for construction. The first is the Lewes District Council area housing target has not increased significantly under the new government methodology. Second, it is our understanding Lewes will not be asked to restart their local housing plan, and in this North Barnes Farm remains 'red' meaning it is unsuitable for development, mainly due to its lack of transport links to support such a large scale development. We understand East Sussex County Council have commissioned a transport study which is likely to further support this point. The other general point to make is the government has discussed creating 'New Towns' to support its housing target. A new town in the government's definition is the building of 10,000 new homes in one area. The Eton Town proposal was for

3,500 homes and therefore would not qualify as a new town.

### **£1,000 Scholarships Available**

The Springett and Campion Educational Trust awards scholarships of up to £1,000 each year to residents of East Chiltington and Westmeston. It's for students proceeding to, or already taking, a course of further or higher education. The student must be between the ages of 16 and 25 at the commencement of the award. Applications need to be in by November 30<sup>th</sup> 2024 and for more information please contact Professor Phil Ashworth at [phil\\_ashworth@btinternet.com](mailto:phil_ashworth@btinternet.com). Good luck!

### **Storage Unit**

Finally the new storage unit has arrived! With some tricky manoeuvring past the trees at Hollycroft on the back of a large lorry, the container was lifted onto its new home in the field. This means the parish has a safe place to store its marquees, tables and chairs for future parish events. Thanks to all those that helped make this possible.

### **The Church**

Owing to some deterioration in parts of the fabric of the church in recent months, discussions are taking place with the church authorities about the work necessary to remedy matters. In the meantime for safety reasons it is understood that the church is currently closed.

### **Future meetings of the Parish**

**Council:** 12th November 2024  
**2025** – Tuesdays 7th Jan, 4th March, 6th May, 1st July, 2nd Sept., 4th Nov. All at Beechwood Hall, Cooksbridge 7.00pm





## James MacCleary MP

As your MP, I've had the pleasure of meeting many of you recently, including at the Apple Day and Horticultural Society Autumn Show in Plumpton. It was fantastic to see so many locally made and grown products, and to catch up with residents. A huge well done to everyone who made the event such a success!

During the conference recess, I've been busy meeting with local groups, nurseries, water quality campaigners, and bus services. I've also been holding surgeries across the constituency to hear your concerns.

I recently met with the Chief Executive of NHS Sussex to push for much-needed local investment in healthcare. It's clear that access to quality healthcare is a priority for many, and I'll continue to fight for the resources we need.

I also voted against the government's harmful cut to the Winter Fuel Payment, which affects over 23,000 local pensioners. During this cost-of-living crisis, these cuts are deeply unfair, and I'm calling for their reversal.

I've submitted a response to the National Planning Policy Framework consultation, stressing the need for more local input on planning and greater support for building social housing. I'll be eagerly watching to see if there are any impacts in the new rules for our villages, including of course the potential North Barnes Farm site, which I and fellow Lib Dems oppose.

If you'd like to discuss any issues or concerns, please get in touch to book a surgery appointment [james.maccleary.mp@parliament.uk](mailto:james.maccleary.mp@parliament.uk)

---

## Sarah Osborne - County Councillor

East Sussex County Council led by the Conservatives is poised to make £55 million worth of cuts, £4 million initially with further cuts expected later in the year as the budget process continues.

ESCC has launched a consultation on initial cuts to services including day centres for the elderly and disabled people, housing support for vulnerable people and services to those with learning disabilities. There are 11 consultations for Adult Social Care and Health. The consultations start on 3 October and close on 28 November 2024. Decisions are expected to be made on the proposals in February 2025.

The situation for our most vulnerable residents is frankly appalling and as a group of Liberal Democrat councillors, we will do all we can to oppose these cuts. We will look at every aspect of the budget to try to find alternatives.

How to give your views

There are 11 consultations about proposed changes to services to help us close the funding gap. Each consultation has its own webpage and survey:

Go to: <https://consultation.eastsussex.gov.uk/adult-social-care/community-support-service>

Community Support Services (learning disability service)

Hookstead and St Nicholas (learning disability day services)

East Sussex Floating Support Service (service for people aged 16+)

Linden Court and Beeching Park (learning disability day services)

Mental Health Community Outreach Service (service for older people)

Milton Grange (day service for older people)

Phoenix Centre (day service for older people)

Recovery services for drug and alcohol misuse (services for adults)

Steps to Work (learning disability service)

Supported accommodation provision for adults with additional needs

Supported accommodation provision for adults with mental health needs

# TREE WISE

Tree Surgery • Hedge Maintenance  
Fire Wood

Stump Grinding • Strimming  
Woodland Management Schemes

Experienced • Insured £5m  
Free Quotation

BSc (Enviro Mgt) • LOLER Inspector  
NPTC

## Charlie Layfield

Office: **01825 724655**

Mobile: **07888 838423**

[www.treewise.co.uk](http://www.treewise.co.uk)

 Checkatrade

## Heath Farm Holiday Cottages South Road, Plumpton Green

Three 4 star cottages sleeping  
two, four and six.

Suitable disabled

Minimum 2 night stay

Regret no smoking or pets.

**01273 890712**

[www.heath-farm.com](http://www.heath-farm.com)

## Help You can Trust

**Services Provided:** Companionship, Dementia Support, Domestic Duties, Medication Assistance, Gardening (basic), Personal care, Transport services, Meal preparation, Post hospital care, Respite care, Secretarial and Administrative assistance, Shopping assistance, Social activities.

**Contact:** Anna Rummeli

**Mobile:** 07511 351 807

**Email:** aowellness1@gmail.com



*Member of the National Association of Care and Support workers*



**GRANT DEJONGE  
PAINTER & DECORATOR**

**01273 891872**

**07495 099708**

[grantdejonge@yahoo.com](mailto:grantdejonge@yahoo.com)

**All jobs considered  
in Plumpton &  
surrounding areas**

## Plumpton Pilates

Morning and evening group classes  
in Plumpton Village Hall.

1:1 Pilates at home also available.

Please contact Charis 07881 825007

[charispilates@gmail.com](mailto:charispilates@gmail.com)

## WEDDING VIDEOGRAPHER

Capture the beauty of your special day with a film to last a lifetime

• Professional & friendly • Range of packages • Tailored to you

Contact me for examples of work and a chat

☎ 07484 602503

📧 [joshuaawhittington](mailto:joshuaawhittington)

✉ [whittingtonjoshua0@gmail.com](mailto:whittingtonjoshua0@gmail.com)





## Daniel Stewart-Roberts - District Councillor

Back in June the Parish Council and I met with officers from ESCC Highways on the site of the planned road narrowing at the entrance to the Nolands Farm development. They explained to us that the legislation governing visibility at junctions makes the road narrowing unavoidable given the Planning Inspector's approval of the development. We therefore focussed on ways to mitigate the impacts of the changes. I am pleased to say that ESCC Highways have just confirmed that the requests we made to them have been adopted – principally a change in the priorities to avoid congestion near the Village Shop and at the busy Riddens Lane junction and a widening of the pavement on the western side of the narrowed stretch of road to improve pedestrian safety.

Food waste collection has continued to be less reliable than it should be, and I have followed up with the Environment First team on several cases of unemptied caddies. Encouragingly the officers have taken this issue seriously and have made some changes that will make the service more dependable. The problem has been that the Plumpton round has been a single person, so that when the regular driver is off it has to be covered by other drivers who are less familiar with the round and can miss some collections. Food waste rounds are in the process of being combined, so that all rounds are operated by two people. This will ensure that there is always someone on the round who is familiar with it.

While on the subject of recycling, I recently learned that Lewes District is one of the only 18% of local authorities that are set up to recycle plastic bags. This means that you can actually put most of the soft plastic bags that are marked "Don't recycle at home" into your recycling. This does not include bags that are made of more than one material, like foil lined crisp packets. You can find a list of the permitted types in the very detailed A-Z of Reduce, Reuse, Recycle section of the LDC web site – just click on the "What can I put in my bin?" link on the home page to find it.

The Flexibus service has recently been simplified. In place of multiple zones there is now a single zone that covers 90% of East Sussex and some key destinations outside, such as the Princess Royal Hospital. You can book a journey up 14 miles from your pick up point. If you haven't used it yet, do give it a try.

Email: [daniel.stewart-roberts@lewes.gov.uk](mailto:daniel.stewart-roberts@lewes.gov.uk)  
Telephone/text: 07966 338429

### JUMBLE SALE

Raising Funds for  
Plumpton Flower Club

SATURDAY  
16 November

2.00 pm – 4.00 pm

Refreshments and Tombola

**PLEASE BRING JUMBLE TO THE HALL  
BEFORE 10.00**

**NO** large items of furniture, electrical items,  
duvets or hospital equipment will be  
accepted.

Tombola prizes always gratefully received  
(deliver to 30 West Gate)  
Help on the day is also appreciated.



The Plumpton Support Group  
for

St Peter & St James Hospice  
would very much appreciate  
donations of bottles of wine  
for the **"Wine and Water"**  
stall at the **Festive Fair**.

If you would like to donate a bottle, then  
please deliver to  
30 West Gate.

Your support is always very much appreciated



# P. M BUILDERS

5 School Cottages,  
East Chiltington

**For all your  
building  
needs**

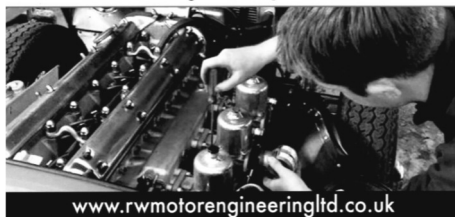
Tel: 01273- 890964  
Mobile 07813 114470

**YOUR LOCAL BUILDER**



Your local friendly family run garage with over 40 years experience in all aspects of vehicle repairs, old, new, classic, sports & prestige.

**All Makes & Models • M.O.T's & Servicing • Repairs  
Diagnostic Specialists • Wheel Alignment  
Tyres & Exhausts • Clutches • Cambelts • ECU Remapping  
Air Conditioning • Brakes • Brake Disc Skimming  
Welding & Fabrication • Engine Tune-ups  
Petrol Injector Testing & Servicing • Diesel Specialists  
Carbon Cleaning • Courtesy Cars Available**



[www.rwmotorengineeringltd.co.uk](http://www.rwmotorengineeringltd.co.uk)

Unit 1, The Old Brickworks,  
Station Road, Plumpton Green  
East Sussex BN7 3DF

Tel: 01273 891393  
Email: [rwengineering@live.co.uk](mailto:rwengineering@live.co.uk)



## PHYSIOTHERAPIST

Amy Cooper BSc (hons), MSc, HCPC, MCSP

Physiotherapy assessment and treatment in the comfort of your own home.

All musculoskeletal, neurological and respiratory conditions treated.

Remedial massage/Sports massage  
Manipulation Mobilisation  
Exercise prescription Dry needling  
Electrotherapy Work station assessments

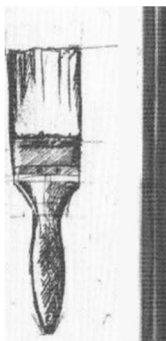
Telephone 07866 762999  
[accooper362@gmail.com](mailto:accooper362@gmail.com)

## Painter

Decorative Paint Finishes,  
Domestic, Business  
& Building Trade  
Michael Webber

[michael.webber6@yahoo.co.uk](mailto:michael.webber6@yahoo.co.uk)  
01273 890779  
07880 558 556

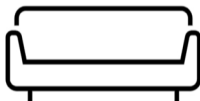
2 School Cottage  
East Chiltington  
Lewes BN7 3AY



## SUZANNE'S UPHOLSTERY

(AMUSF Qualified)

- ❖ Bespoke Upholstery
- ❖ Chairs
- ❖ Headboards
- ❖ Footstools
- ❖ Soft Furnishings



Email - [suzannes\\_upholstery@hotmail.com](mailto:suzannes_upholstery@hotmail.com)  
Mobile - 07738 305342  
Instagram - @suzannes\_upholstery



07702208475  
ODINTUNE COTTAGE EAST CHILTINGTON  
[deadlyseriouspestcontrol@gmail.com](mailto:deadlyseriouspestcontrol@gmail.com)

## ***DR's Diary***

### **Those Were The Days?**

We recently went to see a popular comedian at the O2 Arena. The tickets were a Christmas gift in 2022, amazingly, that's how long you have to wait to see him.

Our star walks onto the stage, he is only half the man he used to be, that's how much weight he's lost and from our seat in the gods, he is a speck, however, thanks to giant screens, that's not a problem. Our man spots a fudge bar someone has conveniently left on the stage and picks it up and starts singing 'a finger of fudge is just enough, etc,etc..' This man certainly knows his core audience, hair gone grey, or gone away and for the next 45 minutes he leads us on a medley of our favourite TV jingles from yesteryear about chocolate bars, soap powders, baked beans, etc.. Our silver surfers singalong was in full flow, apart from the odd millennial, Gen Z or Swiftie. They were the ones with glazed expressions that kept checking their watches. It amazes me how choc bars, baked beans and soap powder brought on such waves of affection. Eventually we moved on to old TV themes and renditions of 'Neighbours', 'Only Fools and Horses', etc,.. follow.

Without doubt, the nostalgia industry is booming. That's why there's a 2 year wait for tickets. We not only have dedicated channels on TV and radio stations, our silver surfers can find all sorts of stuff via YouTube and the www.

But were the 'Good ol' days' that good? Sure, we'll take steam trains, the music, e-type jags, winning the World Cup, Carnaby Street in the swinging sixties and such. But we also had valve radios, bri nylon sheets, drip dry shirts and newspapers that deposited ink on our fingers. As for black and white TV's, anyone remember walking around the room holding an aerial until the picture stopped going round? And then you changed to the other channel ( yes, there were ONLY 2! ) and went through it all

again. I remember 'going round my nan's' to watch the Miss World contests and the Eurovision Song contests. Sadly ( well, for me ) only one was banished to Room 101. Also, we were encouraged to purchase all sorts of chemicals to 'get rid of the bugs in our gardens'. My, how times have changed, eh?

Who gets nostalgic for their pre i-phone Nokia? Or the simple pleasure of buying a light bulb before it got complicated?

Does the nostalgia gene manifest itself gradually with us being unaware its happening or do we have a light bulb moment, like when we spot a favourite vinyl album from our youth at a flea market?

What will today's youngsters tell their grandchildren about the

Good ol' Days in 2024?

Now there's a thought.

### **THE STATION PARTNERSHIP TEAM**

We hope you have enjoyed seeing our floral displays on your visits to the station this summer, it's now the time when we think about planting for the winter. If you would like details about sponsoring a planter please contact  
David Richards: 01273 890267 or 07946 241319

Large planters are £45  
Small planters are £25

This includes the name of your business or a dedication on your planter.

## Plumpton Apple Pressing Day 21 September

Plumpton Village Society and Plumpton & District Horticultural Society came together to hold a community afternoon at the Village Hall. Villagers enjoyed the annual apple pressing with entertainment on the bandstand, plus a great selection of stalls. There was also children's apple games and a tractor. The Horticultural Society Autumn Show was held inside the large hall. The kitchen team were busy, with a range of refreshments including for the first time, delicious homemade take away apple crumbles. Yummy!

Villagers came out to support this community event and we were joined by our new MP, James MacCleary. Here are some memories of a great afternoon.



Plumpton Village Society:  
[plumptonvillagesociety@gmail.com](mailto:plumptonvillagesociety@gmail.com)

## Sean Mannion Carpentry 07958647918 seanmannion67@gmail.com

Skilled carpenter with 30+ years' experience.

Services include: Bespoke fitted furniture                      Heritage timber building restoration  
Garden decking    Raised garden beds  
Door hanging    Timber cladding  
Understairs storage solutions    First fix carpentry

Harrods trained, I pride myself on quality of workmanship and reliability. I can provide a portfolio of previous work on request. Fully insured.

[www.seanmannioncarpentry.co.uk](http://www.seanmannioncarpentry.co.uk)

## SPEAK FRENCH . . .

## ... SPEAK ITALIAN

Small local classes (max 4)  
Flexible times Beginners & Intermediate  
Individual FaceTime lessons £25  
NEW! Walk and talk Conversation small groups; "Promenade" & "Passeggiata"

Contact Sue Strong **07900 594375**  
email: [seegreenwaitrose@gmail.com](mailto:seegreenwaitrose@gmail.com)



## LEARN HOW TO SHOOT A BOW

**Plumpton Bowmen** hold **Beginners' Courses** twice a year in April and October on the Playing Field.

We hold **Have-A-Go** sessions the 3<sup>rd</sup> Sunday of the month from April to August from 2pm to 3.30pm.

For further information see:  
[www.plumpton-bowmen.org.uk](http://www.plumpton-bowmen.org.uk)

## HOME CHARLES CARS

Plumpton Based

Private Hire Taxi Company

- AIRPORT TRANSFER SERVICE
- PRESTIGE VEHICLES
- COMPETITIVE TAXI PRICES
- CORPORATE ACCOUNTS
- CREDIT CARDS WELCOME
- SALOONS AND ESTATES
- PROFESSIONAL, RELIABLE DRIVERS

**077 344 89222**

[homecharles@btinternet.com](mailto:homecharles@btinternet.com)

Guy Sumners

## Window Cleaning

J&B Services

- Conservatory and roof
- Fascia
- Gutters clearing
- Cladding
- Solar panels
- Patio Jet washing etc.

Betty: 07941 899324

Jerry: 07941 899754

email: [info@jandbcleaning.co.uk](mailto:info@jandbcleaning.co.uk)

website: [jandbcleaning.co.uk](http://jandbcleaning.co.uk)

Facebook: J&B Cleaning Services



St Peter & St James Hospice  
Hospice care in the heart of Sussex

## PLUMPTON FESTIVE FAIR

In support of St Peter and St James Hospice

**Saturday 30 November 2024**

At the Village Hall, West Gate, Plumpton Green BN7 3BQ

From 12 noon till 4.00 pm

£1 entry, children under 14 free

Many stalls with crafts and consumables  
Refreshments

**Raffle (1<sup>st</sup> prize £100)**

Performance during afternoon by The Rock Choir  
and of course, Father Christmas (from 2 pm)

Please remember to buy your raffle tickets.

Thank you for your support.



PLUMPTON & DISTRICT FOOTPATH SOCIETY

**RECENTLY MOVED TO THE**

**AREA OR RETIRED?**

WOULD YOU LIKE TO DISCOVER MORE

ABOUT THE AREA IN SOCIABLE

COMPANY AND GET SOME FRESH AIR

AND EXERCISE?



PLUMPTON AND DISTRICT FOOTPATH SOCIETY

ARRANGE THREE WALKS A MONTH ON A

SATURDAY, SUNDAY AND WEDNESDAY

For further information contact Judy Lawrenson on  
01273 472277 or Alan Greening on 07929 713739

## Chailey Heritage Foundation Christmas Market

**Sunday 1<sup>st</sup> December 11-3**

Chailey Heritage Foundation is hosting it's very first Christmas Market! Join us for a day of Christmas fun, packed with beautiful homemade gifts from local stallholders which make the perfect Christmas presents. There will also be festive entertainment for all the family as well as facepainting. Christmas refreshments and tasty treats will be served!

All funds raised will go towards changing the lives of the young people at Chailey Heritage Foundation.

Find us at : The Dream Centre, Chailey Heritage Foundation, North Chailey, Near Lewes, BN8 4EF.

We can't wait to see you there for a day of festive fun!

[Fundraising@chf.org.uk](mailto:Fundraising@chf.org.uk) / 01825 724752

HOME • BAKING

# jenny's

M: 07711562905  
T: 01273890582

Traditional home baking: classic bakes, cupcakes & celebration cakes; or Afternoon Tea in the comfort of your own home.

Find me on Facebook

## Andy Westgate

Local plumpton based gas safe registered plumbing & heating engineer



07415529656

awestgateheating@hotmail.com

## Joe's Bees

Have you always wanted honey bees but always felt too inexperienced to keep them? How about a personal beekeeper then! Hiring Joe from Joe's bees to manage your hives is the perfect way to solve this issue!

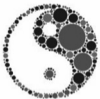
What this entails...

- He will teach you how to look after your bees
- He will manage your bees for an hourly rate of £25 (4 hours a week max in summer)
- He will harvest and jar your honey (jars will come free!) you will be charged a 2 day rate
- He will help you set up and collect your bees at the beginning of the season for a fair price!

Joe's bees is all about working with nature and wildlife in an environmentally friendly way. Not only is Joe a beekeeper he also does extra work such as: creating wildflower meadows, soil management, gardening advice and environmental farming advice. So you will be in good hands!



Instagram - @\_in\_the\_hive\_  
joethebeeman@gmail.com  
07842862709



## Tai Chi with Jo

Tai Chi Classes in Plumpton Green & Lewes

Beginners welcome

No experience necessary

tel: 07986 713974  
email: jo@taichithwithjo.co.uk  
web: www.taichithwithjo.co.uk

## Forest Friends

Woodland crafts, music, nature connection, wild-craft skills and outdoor play for children aged 1-4  
£10 per session paid termly  
or £12 drop in rate



**Now on Fridays: 10-11.30am**

**By the Ferrings lake in East Chiltington**

contact Sarah on 07980 006680 or sarah@littleseeddesign.com



## The Jolly Sportsman

Idyllic, cosy, country pub with rooms

Set menu now available both lunch 12-2pm and dinner 6pm - 7pm on Mondays, Wednesdays and Thursdays - 2 courses £22 & 3 courses £28

Every Saturday from 19th October - 25 mile menu 4 courses £45 per person

Christmas Parties from 1st - 23rd December 2 course £32.50 - 3 course £40. Pre order only 1st October 2024 - 31st March 2025 we will be closing for Sunday night dinner and all day on Tuesdays. Rooms will still be open 7 days a week.

To book a table please visit [www.thejollysportsman.com](http://www.thejollysportsman.com) or call 01273 890400.

We hope to see you!

Chapel Lane, East Chiltington, Lewes, BN7 3BA

## Rev. Anne Dunlop

I keep six honest serving-men  
(They taught me all I knew);  
Their names are What and Why and When  
And How and Where and Who.  
Rudyard Kipling

The subject of curiosity has come to my attention in recent weeks, mostly because I am meeting with a group who are interested in 'spiritual things' and exploring what the bible and the Christian faith has to say. They ask all sorts of interesting questions. They come from a 'different space' to my usual life; they see from a different perspective. They are younger than me so have a different history.

All of this has been both interesting and fascinating. Interesting because their questions remind me that I too wrestle with understanding some things and could benefit from working with them again, and fascinating because it has excited my imagination, rather than just informing my mind.

Humankind has always been curious, otherwise we would still be living in caves. Curiosity motivates us. However, we live at a time when so much information is available to us, it can overwhelm, as well as stimulate our curiosity. All of us struggle to keep pace with emerging technology. It can feel like there is a tsunami of knowledge and information breaking over us. People are reacting to this tectonic shift in order to navigate a way through. Like physical convergent tectonic shifts, the impact can result in some ideas rising up and others diving down. (This is beginning to sound like a lesson in physical geography – apologies!).

An article I read recently suggests here are two frames of mind people adopt to navigate this new world: the Pioneer and the Settler. The Pioneer embraces change seeing it both as a challenge and a frontier to explore. The Settler finds a place within change where they can establish a space to call their own where they feel safe and secure. They are different mindsets, and neither is better nor worse than the other, each has strength and weaknesses.

It is here that curiosity plays its part. We need curiosity, we need people to ask questions for we feel uncomfortable when faced with missing

information. The need to reduce ambiguity pushes us to find explanations or truth.

Being endlessly curious has a positive connotation, it is somehow good, but the downside is an avoidance of settling. Not settling anywhere means we flit from idea to idea and whatever is current. Whenever I engage with someone who describes themselves as 'spiritual but not religious' (SBNRs they have their own initialism!) it all seems ever so vague. Conversely curiosity which settles too soon, is curiosity seeking closure, shutting the door on so much that could enhance life.

In both mindsets we will never 'find the answer' to life, or to ourselves, and probably it is better to be mildly curious all the time. The former Archbishop of Canterbury, Rowan Williams, whose intellect is astounding, would quite often finish an erudite theological explanation with the words "But I may be wrong." A humility quite fitting when we attempt to address the concept of God.

So, what connection does all this have with my group experience. What intrigued me was the open curiosity of my attendees, their energy and involvement, the absence of closed argument or explanation. Nothing was accepted without discussion and some things put into the 'come back later' pile. It was curiosity that originally led them explore faith, to put their 'spirituality' which can mean anything and nothing, into articulated substance and prod it a bit to see if it moved. Pioneers they are, embarking with curiosity on a journey that tentatively involves God, to see what they may discover.

For my part I would say that they will not be disappointed neither will they end the exploration. They have a hesitant 'foot in the water' to see if they can walk on it! I applaud their open curiosity and brave questions. I am also inspired by them to be curious, not to settle too soon with neat answers and to challenge the ones I have. As we move through our lives, let us do so with open curiosity and engagement.

Rev Anne Dunlop  
revannedunlop@gmail.com



## Successful Churchyard Clear Ups

A big thank you to the enthusiastic collection of strimmer's, mowers, pruners, rakers, bag fillers, wheel barrowers and chain saw operatives, who braved the overcast and rainy conditions to give All Saints churchyard a "right" good tidy up recently. Thanks too to Robin Burberry who has strimmed the churchyards at both Plumpton All Saints and East Chiltington recently.

We all earned our bacon butties and the odd beer and coffee supplied by David Dawson and prepared by Rev Anne Dunlop. Running at the same time was a tidy up at East Chiltington churchyard kindly organised by James Otway. Many thanks to all of you.

Howard Wood churchwarden

You are invited to  
**Wine and Cheese evening**

At

Wootton Farm Estate

BN7 3AU

Hosted by Sharon and Laurie Vaisey

On Friday 29<sup>th</sup> November 2024

At 7pm

Secret auction for original painting

Storytelling and Music from local choristers

Tickets £15/head

Further details from the churchwardens, see Parish magazine

## Wonderful Village Harvest Festival lunch raises huge total for charity on Sunday 6<sup>th</sup> October 2024

Nearly eighty people enjoyed a wonderful lunch to celebrate locally grown fruit, vegetables, dairy products and cereals, transformed into salads, flans, crumbles, pies, cakes, biscuits, bread, cheese, butter, custard and cream. This was washed down by recently pressed apple juice and local beers and wines.

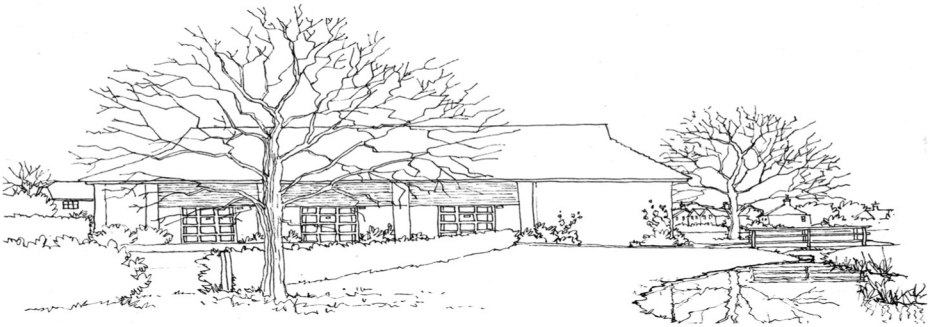
Visitors to the village expressed amazement at the atmosphere in a hall where all the food had been donated and everyone pitched in to prepare the hall and to wash and tidy up afterwards. Talking about generosity, Collette and Peter Haynes donated a wonderful wheelbarrow of produce which was later auctioned for our chosen charity by Rev Anne and master organizer Carole Nicholson. You may not be aware that Collette and Peter donate fresh produce each week to the Tuesday lunches held in the church annex for 30 + people, thank you. I must also mention Hairy dog brewery and Plumpton College for their generosity too.

And so to the amount raised to go directly to the Ripple Effect International charity which works in six African countries to provide a package of ongoing support and practical training in farming skills, gender equality and money management, alongside the provision of livestock and tools to ensure that some of the most marginalized people have the confidence, knowledge and skills to help themselves. The total raised with no expenses was .....

A magnificent £807.50 Well done every body, see you next year.

Howard Wood





## VILLAGE EVENTS CALENDAR

**VH** = Village Hall

**HQ** = Scout HQ

**TC** = Tennis Club

**StM** = St Michael's

**ANX** = Church Annex

**PAV** = Pavilion

**ECC** = East Chiltington Church

**Sch** = Plumpton School

**ALC** = All Saints Church

### BOOKINGS

Village Hall & Pavilion:  
Church Annex

Jane Donovan 07747 050903 or 01273 891036  
Bob Doran 01273 890211 or 07484 348341

- |   |    |
|---|----|
| <b>16th Nov</b> - Flower Club Jumble Sale 2 - 4pm     | VH |
| <b>16th Nov</b> - Plumpton Tennis Club Quiz Night 7pm | VH |
| <b>22nd Nov</b> - Hort. Soc. AGM 7.30                 | VH |
| <b>23rd Nov</b> - 'Journey of the Magi' 6.30pm        | VH |
| <b>30th Nov</b> - St. Peter & St. James Festive Fair  | VH |
| <b>7th Dec</b> - Cricket Club Jumble Sale 2pm         | VH |

Plumpton & District  
Footpath Society

### PROGRAMME FOR November 2024



**Saturday November 2nd** - A 4.5m circular walking starting at 10.30. The walk will take in the churches of East Chiltington, St. Michael's and Streat. Starting point near the racecourse but to be confirmed.

Walk Leaders: John and Judy Lawrenson 01273472277

**Wednesday 6th November** - A 6.5m circular route starting 10.30 at Roosthole carpark, Hammerpond Road RH13 6PG. It will cover ST Leonard's Forest and Colgate.

Walk Leaders: Alan and Jenny Greening 01273890414 / 07929713739

**Sunday 17th November** -

Meeting at 1.30 Lewes Station - £2.60 Car Parking

A short, tranquil and unknown walk through Iford Brooks taking in Lewes, Rise Farm and Iford. A bit of mud. Lovely views and a walk through the Cockshut new area of wetland.

Walk Leaders: Sue and Robin Akers 07775423361



## **PLUMPTON FLOWER CLUB**

If you love flowers and ever wondered how to arrange them, then why not become a member of our friendly group at Plumpton flower club.

Our talented and entertaining demonstrators come and showcase their skills while creating amazing floral designs!

We have a raffle at the end of the evening, with a chance to win one of the wonderful floral creations!

As well as demonstrations, we have talks on various subjects, an annual outing and social get togethers throughout the year, including an afternoon tea!

Membership is £35 per annum and £3 per meeting, visitors £8, which includes tea or coffee and biscuits!

So come along and join us on the 3rd Wednesday of the month (except December & January) at Plumpton Village Hall at 7.30pm.

### **COME AND HAVE YOUR 1ST MEETING FREE!**

Fun, Friendship & Flowers!

For enquiries contact Jo Hale on 07719887590 or Sue Akers on 07799095234

## **Uckfield, Lewes & Newick Arts Society**

**November 13th 2.30 in the Civic Hall Uckfield**

Shopping on the Rialto in Renaissance Venice: Antonia Garward-Cevizli

How about a little shopping? Come to Venice with us to visit the Rialto Bridge and the market beyond. We will be going back in time to the 16<sup>th</sup> Century but in fact little has changed. The first bridge was built of wood and, apart from burning down on various occasions it also totally collapsed during the celebrations for a wedding ceremony. Not surprisingly it was decided to build a stone bridge and in 1591 the present bridge was completed and built entirely of marble. It also continued to have shops on either side which now sell the famous Venetian glassware, masks and linen. The bridge is also called 'the Lovers Bridge' as legend promises eternal love if lovers kiss under the bridge at the exact time the sun sets!

Antonia spent a year at the University of Siena Statale and also lived in Venice. However, her interests are wide-ranging. She has lectured on 15th-century Italian art for the Victoria and Albert Museum and taught Modern Art from Impressionism to Pop at Sabancı University, Istanbul. She has worked as a gallery lecturer at Tate Modern and Tate Britain for a number of years

We look forward to welcoming you. If you want to become a member of our society, please contact me for further information. Visitors of course are always welcome, £8 on the door please.

Annette Shelford  
annette@shelford.net

## Plumpton Primary School

Plumpton Primary School have now got a **Second Hand Clothes Recycling Bin** situated by the school gate (next to the bike shed).

By donating your old items, you will be helping raise much needed funds for the school.

**The more you give, the more funds the school receives!** Thank you for your support



### *Plumpton & East Chiltington Good Neighbours*

**Telephone Contact 07478 524152**

Do you need help or someone to talk to? We are a group of local volunteers who offer a befriending service and help with everyday things such as shopping and simple household jobs, to anyone needing support. We can help on a regular or one off basis and, there are no charges associated with our help, with the exception of travel costs if we transport you somewhere such as to the doctors or another similar appointment. All our volunteers are DBS checked.

It doesn't matter what age group you are in or whether your family is local. If you feel you would like our help or, to talk about how we may help you, please phone Gina or Alison on the above number or, you can email us at: [peggoodneighbours@gmail.com](mailto:peggoodneighbours@gmail.com)

New volunteers are always needed and very welcome. If you are interested in joining our team please get in touch on the contact details above.

### **ENJOY THE COMMUNITY YOU LIVE IN**

Plumpton Village Society created last year a new Plumpton Village Handbook, so everyone can see what makes Plumpton so special.

The Handbook was delivered to every household throughout Plumpton and Plumpton Green.

Plumpton  
Information Handbook 2023



Produced with kind support from



[plumptonvillagesociety@gmail.com](mailto:plumptonvillagesociety@gmail.com)  
[www.villagesocietyplumpton.co.uk](http://www.villagesocietyplumpton.co.uk)

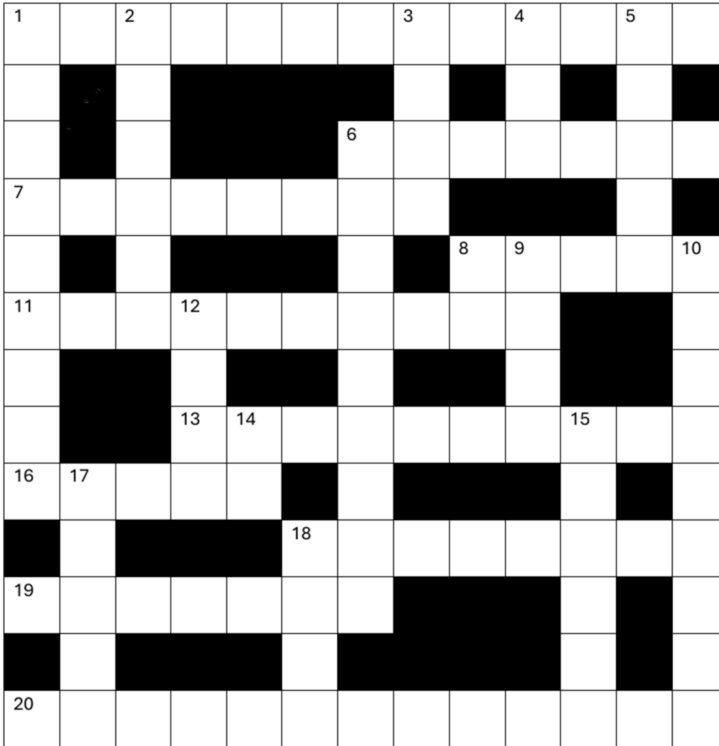
Plumpton Parish Council and sponsorship from Plumpton College, Plumpton Racecourse and Mid Sussex Golf Club. Many thanks also go to the local organisations for their input.

If you live in Plumpton or Plumpton Green and you would like a Handbook, please email us and we will get one to you.

[plumptonvillagesociety@gmail.com](mailto:plumptonvillagesociety@gmail.com)

**DO GET INVOLVED IN OUR LOCAL  
CLUBS & SOCIETIES**

## Crossword for November 2024



### Clues across

1. Attempt to blow up the Houses of Parliament in 1605 (9,4)
6. Two wheeled mode of transport (7)
7. Used when celebrating the events of 1605 (8)
8. County town of East Sussex (5)
11. Small village in Mid Sussex, 5 miles west of Haywards Heath (10)
13. There were 17 \_\_\_\_\_ Martyrs in 8 across, 1555-1557 (10)
16. There are \_\_\_\_\_ bonfire societies in 8 across (5)
18. One of the bonfire societies in 8 across (8)
19. A temporary stay (7)
20. Autumn date to remember 1 across (5,8)

### Clues down

1. Catholic conspirator who was caught in the act in 1605 (3,6)
2. Closer (6)
3. \_\_\_\_\_ the Viking, 1989 film (4)
4. Folded or laminated material (3)
5. \_\_\_\_\_ Pope, England cricket captain (5)
6. Sarah \_\_\_\_\_, former member of Hot Gossip (9)
8. Chinese mile (2)
9. Prepare for publication (4)
10. Another of the bonfire societies in 8 across (9)
12. The back of the neck (4)
14. Registered nurse, right now, royal navy (2)
15. With this, you are cool, calm and collected (6)
17. Pictogram, to help convey emotions (5)
18. Jenny is a small brown bird (4)

**NEED AN ELECTRICIAN ?**

**KJB ELECTRICAL LTD**

Your local electrician, based in Plumpton Green.

Part 'P' compliant & Fully Insured  
For a free no obligation quote,  
Call or Email Ken

T. **07766455378**

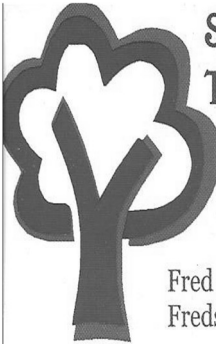
E. **kjbelectricaltd@gmail.com**

**Love Your Clothes**

**Get Ready For  
That Special Occasion/Holiday  
Just Revamp, Shorten, Mend**

I make curtains/cushions, kids stuff &  
lots more. **Give Me A Ring**

**Fran:** 01273890731, 07719539513



**SYMES  
TREE SURGERY**

ALL ASPECTS OF TREE  
SURGERY

HEDGE CUTTING

LOGS AND WOODCHIP

Fred Symes 07889420474  
Fredsymestree@gmail.com



Experienced · Insured  
Reliable

For a free friendly quote  
phone Nigel Clough  
on Newick 01825 723138  
or **07504224335**

- Fencing
- Gate's
- Patio's
- Path's
- Hedge Cutting
- Rotovating
- Planting
- Shed
- Bases
- Lawn
- Mowing
- Turfing

Making  
Mending  
Altering



dodiesews.co.uk



Seamstress services  
Dodie - **07934495628**

**John Church electrician**

Professional, Courteous

**Local Electrician**

For all your electrical needs

Fully Qualified - Part P Registered  
All Work Guaranteed - Fully Insured

Call John  
**01273 900251**

**info@johnchurchelectrician.co.uk**



**OJH ROOFING**

FOR ALL OF YOUR ROOFING REQUIREMENTS

**07469944765**

**OJHROOFING@OUTLOOK.COM**

**WWW.OJHROOFING.COM**

3 HOLLYCROFT  
EAST CHILTINGTON, LEWES  
EAST SUSSEX BN73AZ



## **CHAILEY REPAIR CAFÉ – NOW WHERE DID I PUT THOSE INSTRUCTIONS????**

We're forward to seeing you and your broken stuff as we head into the last 3 Repair Cafés of 2024. But may we make a special request please?

There is a tendency nowadays to when you unpack your new appliance to throw away the instruction manual! We know that nowadays many are online, but if you have kept the instructions, take the time to read them because it may well help you solve some of the faults yourself. This applies particularly to any form of vacuum cleaner, notably Dysons where you need to clean and wash the filters. Sadly, we see too many of these where the innards are all bunged up because the filters have never been cleaned since it was new!

If you no longer have the instruction manual, you'll find one online which you can print them out and keep close to hand. Stuff is getting more complicated nowadays and it really does pay to understand how it works – help us to help you and if do you have the instructions, please bring them with you when you visit!

Although you can bring as many items as you wish to be repaired, we only permit you to book in one at a time, in fairness to those who will be in the queue behind you. Once your first item has been looked at, you can of course book in the next and join the list – if you're there early enough, there's a good chance we

can also look at the next one.

Chailey Repair Café is part of a world-wide movement where volunteer experts repair things free of charge – although a donation towards running costs is invited. Anyone can bring along broken items or clothing needing repair from home, and have a cuppa and a cake and then watch while your repair is done in front of you.

You'll find us at St Peter's Church, Chailey on the A275 at Chailey Green on the second Saturday of each month (12<sup>th</sup> October, 9<sup>th</sup> November, 14<sup>th</sup> December and so on) between 1000hrs and 1300hrs where we have a full Café service including our legendary cakes!

Not sure if we can fix your broken item? Contact us at [chaileyrc@gmail.com](mailto:chaileyrc@gmail.com) and we'll see what we can do to help.

See you very soon!!

### **Pop in cafe**

Following the unfortunate departure of one of the team, we are in desperate need of a volunteer or two that can lend a hand weekly or occasionally at the cafe in the church annex on Thursdays between 10.30 - 13.00.

Please call Jo Hale on 07714 9887590 or pop in on a Thursday and speak to one of the team



## Shades Of Sussex

### High Spec female Painter & Decorator

Competitive Quotes  
References Provided  
Fully Insured  
**07874 603503**

**YOGA CLASSES**  
with Andrew  
Mixed classes for all levels in Plumpton Green



Contact 07932635778 for more details.

## Keystroke Associates

Est. 1994

Specialists in  
COMPUTER 'HOW TO' & SUPPORT - MID SUSSEX

**07752 684733**

jan@keystrokeassociates.co.uk  
www.keystrokeassociates.co.uk

- Internet, WiFi & Email Issues
- Online Safety & Security
- NHS Online, Online Shopping & Bookings Safely
- Facebook, Instagram, WhatsApp

- Word Processing
- Spreadsheets
- Label Mail Merge for Xmas Cards
- Scanning & Printing
- File & Folder Management

- PC Healthcheck - Windows 11
- Purchasing/Installing New Devices
- Troubleshooting & Virus Removal
- Backup, Upgrades

PC • LAPTOPS • SMARTPHONES • TABLETS  
DIGITAL CAMERAS • KINDLE

One to one  
tutorials in  
your own home,  
on your own  
devices



Be  
prepared  
don't let the  
scammers,  
scam  
You.

## Lucy Locksmith

**24hr Callout**  
No Callout Charge



Rapid Response

No VAT

**Checktrade**  
Always  
Before you use them

Police checked

190 Locks Changed & Upgraded (To BS3621)

Free Estimates

Discount for Senior Citizens

Have you just moved?

Who else has a set of your keys?

For peace of mind do you need your locks changed?

Do your locks comply with your home insurance?

Friendly female staff

Lock outs, Break ins, all makes of locks

**07780 840462**

"Store this number on your phone,  
you never know when you will need it"

## PAINTER & DECORATOR

Interior/Exterior  
Fully Insured - Reliable

for a free estimate please call

**Steve Dartnell**

**07707806920**

steddartnell84@gmail.com



## Woodstock Construction

Kitchens Bathrooms  
General Building

We specialise in Kitchen & Bathroom  
refurbishment.

Liaising closely with our Clients to  
obtain the best possible results.

Over 35 years experience.

Call David for a free survey or further  
information.

Mobile: 07961123054

Email: Woodstockcons@gmail.com



## Plumpton & East Chiltington Wildlife

I wouldn't mind betting that more people in Plumpton and East Chiltington have seen a real live elephant than have seen a real live mole. It is a rare privilege to see one above ground.

Moles are a fossorial creature meaning they have adapted to live primarily under ground. Moles are insectivores and specialise in hunting earth worms. Apart from worms they will eat beetles, cockchafers, slugs, small amphibians and even each other.

A mole may catch food during the construction of their tunnel network or simply by prey falling into the tunnel, which acts as a trap or by foraging on the surface beneath the leaf litter. This is when you are most likely to see one. Once a worm falls into the tunnel and is caught, the mole manipulates the worms head into its mouth and decapitates it, then tugs it through its forepaws cleaning soil and grit from the worms skin and gizzard. Unsurprisingly tooth wear from grit is the main cause of the moles death. In the wild moles live at least two years with some individuals as much as five years old.

Moles will hoard caches of beheaded earthworms that are rendered immobile and stored in a separate sealed chamber. During dry or very cold periods, soil invertebrates become less mobile and retreat more deeply into the soil column where they seek moisture or warmth. To compensate for temporary food shortages moles either follow their prey deeper into the soil creating new deeper tunnels sometimes up to a meter down in depth or foraging on the surface amongst the leaf litter.

Whenever active, moles are intent on locating prey, protecting their territory from potential competitors and maintaining or enlarging their existing tunnel system. Such activities account for almost 55% of each day. 49% of this time is spent moving, 41% digging and 10% dozing in the tunnel away from the nest.

Sunrise appears to be an environmental factor that stimulates mole activity. One reason for this may be that earth worms which will have fed at the surface during the night retreat into the soil before sunrise. In doing so a number of these may fall into the cunningly laid tunnel traps where they may be detected by the vigilant mole.

Moles are essentially solitary and aggressive animals and it is only during the very brief breeding season that the animals normal defensive barriers are lowered. During the breeding season, February to March, males will often forsake their own tunnel systems and wander over considerable distances looking for females. It is always the males that searches for a suitable female and this is the only time of the year when a female will tolerate another mole within her territory. Unfortunately, we find it difficult if not impossible to tolerate a mole in our territory despite the huge benefit of mole activity to soil health and drainage. Our sensibilities to a pile of top soil in the middle of the lawn when we draw the curtains in the morning is just too much for some of us to bare.

James Otway

# C. LEWRY GROUNDWORKS

- DRIVEWAYS, PATIOS & PATHS
- FENCING
- FOOTINGS & CONCRETE BASES
- DRAINAGE
- TURFING / LANDSCAPING
- DIGGERS + OPERATOR HIRE

Over 25 years experience + based in  
Plumpton Green

**FULLY INSURED**

Contact Chris for a free quote

**07854 787 545**

chrislewry1980@yahoo.com

# CHARLES WYCHERLEY

INDEPENDENT ESTATE AGENTS

56 High Street, Lewes  
01273 069006 or 07912 935889  
Email: office@charleswycherley.co.uk  
Living locally in the East Chiltington/Plumpton  
area.

**Competitive rates for locals**  
Estate Agent and Chartered Surveyor



## Ladybirds Playgroup



Come and join in the fun on Wednesdays!



Babies, toddlers and pre-school children all welcome at  
this community run playgroup.  
A lovely way to meet local people in a relaxed, friendly  
atmosphere.

Plumpton Village Hall

Wednesdays (Term Time) 9.30 to 11.30am  
£2.50 per family (first session is free)  
ladybirdsplumpton@gmail.com

## Angelo Spadaccini

Oil fired boiler and Aga service engineer

01403 741600

Fully experienced and insured

Info : [www.facebook.com/angeloilfired](http://www.facebook.com/angeloilfired)



# LEE'S LOCKS

**NO CALL OUT CHARGE!**

All locks fitted to insurance BS3621

Window Locks • Supplied & Fitted  
Fully Guaranteed • O.A.P. Discounts  
Insurance Work • UPVC Specialist  
Digital Locks • Break ins  
Garage Door • UPVC/Patio  
Police Checked • No VAT!!!



**LOCKED OUT? DOOR JAMMED?  
LOST KEYS? NEED EXTRA SECURITY?**

*Store this number in your  
phone NOW! You may need it*

Tel: 01273 803 084

Mob: 07921 068564

Email: [lee@lees-locks.com](mailto:lee@lees-locks.com)

FREE PHONE 0800 44 88 147



**Checkatrade**  
Always  
Before you use them



## ELECTRICIAN

**DEAN FERGUSON**  
YOUR LOCAL CHAILEY BASED

OVER 30 YEARS EXPERIENCE

Registered with NAPIT to certify to part P

No job too big, no job too small (labour VAT Free)

Tel: 01825 723661

MOB: 07754000147

Email: [deanfergusonelectrician@hotmail.co.uk](mailto:deanfergusonelectrician@hotmail.co.uk)



# ATKINSON PLUMBING & HEATING Ltd



07973 550114

01825 791232

- Kitchens & bathrooms
- General refurbishment
- Carpentry service available
- Woodburners
- Boiler installation / servicing
- Central Heating

We cover West Sussex & surrounding areas

**Our customers have rated us 10 for Workmanship and Courtesy on**

**Checkatrade.com**  
Where reputation matters

## PAY LESS TAX

Formerly with the world's largest accountancy firm for many years, I am now available freelance, to deal with all tax/accountancy matters, at a fraction of company rates. Ring for a free meeting.

### LAWRENCE FLOWERS

School House

Plumpton Green, Lewes BN7 3DP

**Tel: 01273 891505**

Email lawrie8f@gmail.com



## CLAPPTAPSPORT

Book Here

*Feeling Tired and Sluggish?*



**NEW FITNESS CLASSES**

*Experienced Trainers providing group exercises for all abilities*

*Only £5 a session*

*Monday Nights 8-9pm Plumpton Green Village Hall*

*Starting 08/07/24*

[www.clapptapsport.co.uk](http://www.clapptapsport.co.uk)

07510 159914



### Community-run preschool in the heart of Plumpton Green

Flexible hours available between  
8.30-5pm Monday-Wednesday  
8.30-3.30pm Thursday & Friday  
Ofsted rated **OUTSTANDING**.

The Pavilion, Plumpton Green  
[hello@honeybeespreschool.co.uk](mailto:hello@honeybeespreschool.co.uk)  
[www.honeybeespreschool.co.uk](http://www.honeybeespreschool.co.uk)  
07786615686

### REFLEXOLOGY

Auricular acupuncture

RESTORATIVE FACIALS

Natural non-toxic manicures

AROMATHERAPY

Hot stone neck, head massage

EYELASH TINT, BROW THREADING

Skin products, face enhancing

YOUTHFUL FACIAL ACUPUNCTURE

Ear seeds - Acupressure release

STEPHANIE SLADE

*Stephanie Slade*

07835 927868

[stephanieslade.co.uk](http://stephanieslade.co.uk)

[pomme@theFirs](mailto:pomme@theFirs) Beresford Lane, Plumpton, BN8 4EN



simon cooper

## scoopsweb

web solutions

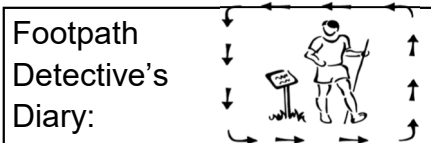
Plumpton-based web designer

tel: 07870 570050

email: [simon@scoopsweb.co.uk](mailto:simon@scoopsweb.co.uk)

web: [www.scoopsweb.co.uk](http://www.scoopsweb.co.uk)

**For all your website and digital marketing needs**



## **A Footpath Detectives Diary November 2024 Malling Hill revisited**

It was 17 years ago that I wrote about this route so I've decided its time to revisit (and hope that not too many readers have long memories). The starting point is the path near the lay-by on the B2192 between Earwig Corner and Ringmer we soon came to a gate, where we entered the Malling Down Nature Reserve on the site of extensive chalk quarries cut deep into the hill. Its early autumn.

Not wanting to take the obvious and heavily used path we quickly cut off left to climb steeply the side of Bridgewick Pit. A look over the edge revealed the benefit of the habitat to the birds. Steep cliffs of chalk surround each pit. Grass has grown on the thin soil but is cut short by the nibbling rabbits and grazing which preserves this habitat. Bushes had benefited from rain and warmth of the summer and were now laden with berries. The small birds were having a final feed before night fall. In a couple of minutes we saw blue, great, and long tail tits, along with a black cap fly right past just below us, a perfect view of these busy little chaps that make the most of nature's larder. High in the sky swallows stock up in preparation for their long flight.

We rounded the top of the pit and noted the small ridge above formed from the soil that had been dug off the chalk before quarrying commenced. Its a small ridge, again a sign of just how thin the soil layer is on the Downs in these parts. A stile led us out on to Malling Hill where it is possible to see the remains of the ancient field systems of Iron Age dwellers. The day had been warm but misty cloud had prevailed and now was in fact the clearest part of this day. From our vantage point we could view a large part of Sussex, picking out Barcombe Reservoir, The Broyle was very visible running its straight course to Shortgate, the meanders of the River Ouse as it flows

around Hamsey church before twisting round to Lewes. Beddingham Hill and Firle Beacon peaked out over the top of the intervening downs to the South, and to the west the old chalk pits of Offham with the silhouette of Black Cap beyond stood out in the evening light.

It was clam and the sun picked out the hay rolls in the fields below, whilst a few other fields were already brown from the action of the plough – summer was over but this evening was warm and one of the better of this year. We rounded the Adonis dew pond near the top of the hill, so named, I guess, because of the Adonis Blue butterflies which frequent the down. These butterflies like the short grass of the chalk downland and the warmth of our southern climate but are said to be quite rare. The caterpillars feed on Horseshoe Vetch before being taken underground into ants' nests. The ants protect the caterpillars, which in turn provide their hosts with a sugary liquid.

On top of the hill but out of reach (its in the middle of a fenced field) is a cairn of flint. Closer inspection revealed this was created by a wire cages into which the flints were placed.

We continued further round the top of a couple more pits, enjoying the view, as no doubt were the balloonists who were taking advantage of the calm evening. Then the descent, easy at first but becoming steeper. Rabbits' white tails bobbed about in the hollows as we wandered round the many paths within the quarried area, at times finding ourselves on a promontory with now where to go but back. Strangely this was not frustrating as each offered a different and rewarding view of the wildlife and manmade landscape of the disused pits.

This small but beautiful area is rich with life, and so easy to explore (so long as you can manage short steep ups and downs). As it faces north/north west, and because the butterflies and wild flowers are at their best in summer, this is a perfect area for a summer evening's stroll.

EJH



## Bird Watch

As we get deeper in to Autumn and the approaching winter, bird populations change. Many species are obvious visitors as we see them only during these months. Fieldfares, Redwings and Bramblings, that we may see locally, would fall into this group. To see others, like geese, ducks and waders, we may have to travel to reservoirs, salt marshes or the coast as they require specialist food found in these habitats and are often found in large gatherings.

Other birds, familiar to most of us all year round, are joined by others of the same species from Eastern European countries to escape the cold weather. The huge, spectacular flocks of Starlings seen in the evenings before roosting are mainly foreign birds seeking security in numbers and warmth at night. Adult resident Starlings will still use the cavities in rooves within their territories to roost, to retain their chosen patches. Blackbirds and Chaffinches, both very familiar birds as breeding here, are joined by many from Scandinavia or Europe. They appear the same but on approach, may be much more flighty, not just slipping into the garden hedge as a local bird would, but departing at speed and height as they have no regular territory.

Some quite surprising birds come to Britain for winter. Those it is difficult to imagine to be able cross large bodies of water such as the North Sea and the Channel. Coots are the black birds with a white forehead found breeding on lakes here. They appear

cumbersome with a heavy flight and reluctant to take to the air unless chasing a rival near the nest. Large numbers arrive from central Europe annually and can be seen on the grassy areas beside lakes and gravel pits. I know that they can swim but they would gain little alighting on the rough sea on their migration and could find no food as they feed on freshwater weed and grassy vegetation. I believe they travel at night as now there are devices that can recognise flight calls, theirs have been identified in that way.

Today I saw a large flock of several hundred Wood pigeons flying high south-east towards the Beacon. These would most likely be from Scandinavia, heading towards the Continent seeking a food supply of green vegetation and seeds. When I visited Portland Bill at this time of year, throughout the day, a continual stream of Wood pigeons headed south and out to sea. This is one of the most southerly points of the country so an obvious departure point.



# A. C. TAX SERVICES

ACCOUNTANCY  
& TAXATION SERVICES  
**Kelvin Speirs**

Fyndings, Station Road  
Plumpton Green  
Lewes BN7 3BX Tel: 01273 890785  
Email: kelvinspeirs60@gmail.com

Est. 1993  
**KINGS FRAMERS**

Unit 55, The Old Brickworks, Plumpton, BN7 3DF

- \* Bespoke Framing
- \* Interior Consultancy
- \* Picture Hanging
- \* Framed Artwork & Mirrors

Contact us to make your appointment

**01273 481020**

info@kingsframers.com

www.kingsframers.com



## Pet Photographer

**Bea Bowen - BA Photography**

Keep the memory of your little friends forever

Animal lover ● Friendly ● Professional

Contact me for more information

07856363603

Beabowenphotography

beabowen14@gmail.com



## Therapeutic Yoga - 1:1 tuition

*20+ years experience*

*Movement and Stillness for body and mind for people living with*

**Learning and Physical Differences**

**Neurological Conditions**

**Dementia**

**Frailty**

*For more details contact Amber*

*07795 170803 / ambertheward@hotmail.com*



Traditional & Power Sweeping  
Tel. 01273 858568 Mob.07889 485832  
*Fully insured Friendly & Reliable*



Beautifully made curtains, Roman blinds, cushions & soft furnishings. Alterations & repairs to existing curtains & soft furnishings.

All carried out by a fully trained professional curtain maker.

Call/WhatsApp  
07711995385 or email  
[judith@sewjudith.co.uk](mailto:judith@sewjudith.co.uk)

# A.M Appliances

- Washing Machine Repairs
- Dishwasher Repairs
- Electric Cooker Repairs
- Tumble Dryer Repairs
- Spare Parts



Domestic Appliance Repairs

Allan Mansfield

01273 890917

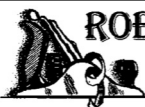
[www.amappliances.co.uk](http://www.amappliances.co.uk)

01444 391112

[service@amappliances.co.uk](mailto:service@amappliances.co.uk)

[www.checkatrade.com](http://www.checkatrade.com)

Find us on facebook



## ROBERT BRADSHAW

CARPENTER / JOINER

25 YEARS EXPERIENCE

Newick

- Purpose-made Wardrobes
- Doors / Architraves
- Cupboards / Shelving
- Kitchens
- Property Maintenance

Mobile: 07811 224400

Email: [robcbad@gmail.com](mailto:robcbad@gmail.com)

## MPS Electrics

For all your electrical needs

Local Electrician  
Fully qualified/insured

Contact Marcus on

Tel: 01273 525545

Mob: 07546505447

email: [mpselectrics@gmail.com](mailto:mpselectrics@gmail.com)



Proud members of

**Checkatrade.com**  
Where reputation matters

COME AND JOIN US  
AT YOUR LOCAL, FAMILY FRIENDLY  
TENNIS CLUB

- LTA QUALIFIED COACHES
- ADULT/JUNIOR COACHING  
SATURDAY SESSIONS FOR JUNIORS OF ALL AGES
- CLUB NIGHTS/RUSTY RACQUETS/TEAM PLAY
- CHILDRENS' EASTER & SUMMER CAMPS
- JOIN IN WITH OUR COACH RUN CARDIO  
SESSIONS A GREAT WAY TO KEEP FIT
- AWARD WINNING CLUBHOUSE
- FLOODLIGHTS



WANT TO KNOW MORE?  
CALL LESLEY SATCHELL ON: 07590 354420  
OR EMAIL: [info@plumptonc.org.uk](mailto:info@plumptonc.org.uk)

### Advertise Here !!

Contact  
[pecntreasurer@btinternet.com](mailto:pecntreasurer@btinternet.com)

Or

Phone  
**01273 891427**

## Garden maintenance



Phillip 07812 364395

Professional, Experienced, Reliable





## Chailey Commons Society

[www.chaileyccommons.org.uk](http://www.chaileyccommons.org.uk)

As autumn turns to winter the commons have lost the heavy mantle of bracken and the paths have opened, and everything is shutting down. From November the days and weeks descend into deep winter, and our attention reveals the trees. This is possibly the best season to enjoy them. The leaves have left their branches and no longer disguise the trees' natural beauty. The rough, rugged bark and silky-silver skins are revealed, with their seemingly sculptural arms reaching out to the sky. We have been enjoying the season on the commons with walks and the seasonal fungus exploration never disappoints. Thanks to Martin Allison once again for his knowledge and enthusiasm. We also learnt about sustainable cut flowers and went home with lovely bunches.

The Exmoor ponies on Red House continue to provide the lookers with fun and games on their daily searches – sometimes the herd is together but other times nowhere to be seen. Thank you to all the helpers for their tenacity and teamwork.

Down at Markstakes Common the volunteers continue with their detailed and sensitive conservation and lately working on the northern bracken field teasing out the bramble roots and bracken. It is rewarding in its own way as looking at a completed patch brings satisfaction. There is always room for more volunteers, meeting regularly on Monday mornings at 9.30.a.m. for a good couple of hours spent in this special place. Tools and gloves, easy parking and biscuits provided. If you think you would like to join in for exercise and a

sense of achievement, come along to the gate in the flint wall in Markstakes Lane South Chailey any Monday at 9.30.a.m. A welcome is assured. November brings Remembrance and this year will be on Sunday 10<sup>th</sup>. with Poppy Day poppies for sale from October 26<sup>th</sup> door to door or street collections. Guy Fawkes is celebrated around the district centered on the 5th, and Chailey Bonfire Night is on 9th November with the torchlight procession and bonfire between 6 – 9 pm.

We have been making and selling our traditionally made Besom brooms and there are still some available – let me know if you would like to buy one – excellent value and locally sourced with birch from the commons.

We look forward this month to our next meeting – November 21<sup>st</sup> Chailey Village Hall 7.30.p.m. for a talk on Barn Owls by Terry Hallahan of the Sussex Barn Owl Study Group

For further information, visit our website –

[www.chaileyccommons.org.uk](http://www.chaileyccommons.org.uk) or our Facebook page [www.facebook.com/chaileyccommons/](https://www.facebook.com/chaileyccommons/) or [friendsofmarkstakescommon.weebly.com](http://friendsofmarkstakescommon.weebly.com)

William Coleman  
01444 831098



## Lewes District Citizens Advice

15 – 19 Chapel Street  
Newhaven  
BN9 9PN  
@Lewescab1

[www.lewesdistrictca.org.uk](http://www.lewesdistrictca.org.uk)

Contact : Sophie Hoffman 01273 007556

**I don't have a will, but I wonder if I should make one. The problem is, I don't know where to start or how to make it official.**

Making a will can feel daunting, but it's important, even if you don't think you have many possessions or much money. Without a will, rules dictate what happens to your money, property, and belongings, and they may not go where you want.

Solicitors charge for their services, but they should tell you the cost upfront, which varies based on the will's complexity. It's wise to compare several solicitors before choosing one. Before contacting a solicitor, think about key details like your assets, who should receive specific possessions, and if you want to leave gifts to charities.

You should also decide who will care for any children under 18 if applicable.

You must choose executors to handle your estate and ensure your wishes are followed. It's common to appoint two executors, in case one is unable to act. Executors are often relatives, friends, solicitors, accountants, or banks.

For a will to be valid, the person making it must be 18 or older and of sound mind, meaning capable of rational thought and decision-making. The will must be made voluntarily, in writing, and signed in the presence of two witnesses, who must also sign. It should be dated, and once signed and witnessed, the will is complete. Store your will safely at home, with a solicitor, a bank, or at HM Courts and Tribunals Service (HMCTS). Avoid attaching other documents to the will to prevent confusion.

For more information, visit the Citizens Advice website and you can speak to a local adviser on freephone 0808 278 7892 - lines are open Tuesday - Thursday 10am-3pm.



**EAST CHILTINGTON**



## ***Societies***

## ***Clubs***

## ***Groups***

*For changes or new entries:*

*phone:*

*01273 891427*

*Email:*

*pecncopy@gmail.com*

<b>Baby &amp; Toddler Group</b>	<b>Charlotte</b>	<b>01273 891086</b>
<b>Beekeeping Group</b>	<b>Jim Thompson</b>	<b>07597 067535</b>
<b>British Legion</b>	<b>Reg Lanaway</b>	<b>890070</b>
<b>Brownies</b>	<b>girlguiding.org.uk</b>	
<b>Chailey Commons Society</b>	<b>William Coleman</b>	<b>01444 831923</b>
<b>Cricket Club</b>	<b>Kelvin Speirs</b>	<b>890785</b>
<b>Flower Club</b>	<b>Sue Akers</b>	<b>891701</b>
<b>Football Club</b>	<b>Paul Manville</b>	<b>07813 114470</b>
<b>Footpath Society</b>	<b>Judy Lawrenson</b>	<b>01273 472277</b>
<b>Guides</b>	<b>girlguiding.org.uk</b>	
<b>Happy Circle</b>	<b>Cherie Winchester</b>	<b>891592</b>
<b>Honeybees Preschool</b>		<b>07786 615686</b>
<b>Horticultural Society</b>	<b>Lin Pilfold</b>	<b>01273 475594</b>
<b>Hospice Support Group</b>	<b>Sue Akers</b>	<b>891701</b>
<b>Junior Football</b>	<b>Darryl Bailey</b>	<b>07792 686673</b>
<b>Oil Buying Group</b>	<b>Diane Marks</b>	<b>07929 336065</b>
<b>Pantomime Society</b>	<b>Penny Acton</b>	<b>01273 891427</b>
<b>Plumpton Activity Scheme</b>	<b>Becca Baker</b>	
	<b>plumptonactivityscheme@gmail.com</b>	
<b>Plumpton Bowmen</b>	<b>Mark Piercy</b>	<b>07799 467997</b>
<b>Plumpton Camera Club</b>	<b>Tim Honess</b>	<b>01273 890582</b>
<b>Plumpton &amp; East Chiltington</b>		<b>07478 524152</b>
<b>Good Neighbours</b>	<b>Gina Hawthorne</b>	
<b>Plumpton Rude Mechanical</b>	<b>Lee Stevens</b>	<b>07887 562721</b>
<b>Theatre Co. Friends</b>		
<b>Plumpton Short Mat Bowls</b>	<b>Malcolm Beard</b>	<b>890826</b>
<b>Plumpton Tennis Club</b>	<b>Lesley Satchell</b>	<b>07590 354420</b>
<b>Plumpton Village Society</b>	<b>Lee Stevens</b>	<b>07887 562721</b>
<b>PPTFA</b>	<b>Marie Leviston</b>	<b>891497</b>
<b>Plumpton Vol Driving</b>	<b>Gill Medhurst</b>	<b>01273 890055</b>
	<b>Bookings - Jackie</b>	<b>07855213947</b>
<b>Rainbows</b>	<b>girlguiding.org.uk</b>	
<b>Rugby Club</b>	<b>Mike Allen</b>	<b>890076</b>
<b>Scouts</b>	<b>Rodney Hills</b>	<b>890410</b>
<b>Southdown East Pony Club</b>	<b>Mike Nichols</b>	<b>01444 452295</b>
<b>Stoolball Club</b>	<b>Jo Taylor</b>	<b>890450</b>
<b>Turning Pointe Dance Classes</b>	<b>office.turningpointe@gmail.com</b>	
<b>Wildlife Group</b>	<b>Jean Stewart</b>	

## ***Plumpton & East Chiltington News***

Advertising & Admin: Barry Luck

Email: pecntreasurer@gmail.com 01273 891 427

Typesetting:

Penny Acton

Email: pecncopy@gmail.com 01273 891 427

Distributed by:

Christine Millum 01273 890854

Printed By;

Devon Print Ltd. 077955 66066

# **Plumpton & East Chiltington News**

**If you have a business providing services  
in the Plumpton and East Chiltington  
area and would like to advertise in this  
magazine please email:**

**[pecntreasurer@btinternet.com](mailto:pecntreasurer@btinternet.com)**



**EAST CHILTINGTON**

