

Plumpton & East Chiltington News

January 2025



Z. R. LANDSCAPES

Landscaping
Fencing
Hedge Cutting and Treework
Turf Laying
Driveways
Patis
And More

Zac Robins

07949 220721

landscape@nsza.co.uk

CONTACT FOR A FREE ESTIMATE

HILLS

OF PLUMPTON

DRIVER TRAINING CAR, LGV, PCV, FLT, HIAB

40 East View Fields
Plumpton Green BN7 3EF
Tel: 01273 890410
www.hillsofplumpton.co.uk

Eastwood Heating & Plumbing

Keep your energy bills low by making sure your boiler is serviced regularly. A well serviced boiler keeps your energy consumption low and can Identify faults early, avoiding expensive breakdown cost.

Plumpton Green based Heating Engineer
for all Oil and Gas appliances

please call James on 07876 294262 or 01273 890526



104339 528262

Plumpton Stores & Post Office

Your local village store is now open:

6.00am to 7.30pm Monday to Friday

7.00am to 7.00pm Saturday

7.00am to 1.00pm Sunday

8.00am to 1.00pm Bank Holidays

01273 890229

P.A. Brooks & SON

INDEPENDENT FAMILY FUNERAL SERVICES

Ravenoak, 46 Allington Road, Newick
East Sussex, BN8 4NB
Tel (01825) 722895 (By Appointment)
35 Wivelsfield Road, Haywards Heath,
West Sussex, RH16 4EN
Tel (01444) 454391



FUNERAL PLANS FROM
Golden Charter



info@brooksfunerals.co.uk | www.brooksfunerals.co.uk



RICHARD SOAN ROOFING SERVICES

Flat & Pitched Roofing

Award Winning • Domestic • Heritage • Commercial • Education • Industrial

All advice free and without obligation

Tel: 01273 486110

Email: enquiries@richardsoan.co.uk

www.richardsoan.co.uk



PLUMPTON & EAST CHILTINGTON NEWS

January 2025

Page

Plumpton Parish Council	2	Pantomime Poem & Wordsearch	18
East Chiltington Parish Council	4	Arts Society	19
TECT News	4	Plumpton & East Chiltington Good Neighbours	19
Daniel Stewart-Roberts	5	Journey of the Magi	19
Royal British Legion	5	Plumpton Society	20
Singing Mamas	7	Chailey & Newick Arts	20
St Peter & St. James	7	Chailey Repair Cafe	22
DR's Diary	9	Plumpton & East Chiltington Wildlife	24
Macmillan Coffee Morning	10	Footpath Detective	27
New Years Day Walk	12	Birds	28
Once Upon a Time in Pantoland	14	Chailey Commons Society	31
Rev. Anne Dunlop	15	Citizen's Advice	32
Church Services	16	Clubs & Societies	33
Events Calendar	17		
Footpath Society	17		

Happy Circle

Will be back in February

For more details contact:
Cherie 01273891592



COPY DEADLINES

***17th January for February
15th February for March***



**Copy to The Poplars, Station Road
or email: pecncopy@gmail.com or Telephone: 01273 891 427**



Plumpton Parish Council

www.plumptonpc.co.uk

PARISH COUNCILS – What do they do?

The Parish Council wishes all residents a Happy New Year. At the time of writing it is early December and the Parish Council have again erected a Christmas Tree on the Village Green to add to the festive light displays going up around the village. The council December meeting falls after the magazine copy deadline but here are a few activities we have been engaged with this month.

Lewes District Plan

Early in the new year a draft local plan will be released, and a first phase of consultation will run from week commencing January 6 to February 28. Phase one of the consultation will consider sites targeted for development within towns and a limited number of villages. To find out how to respond and get more information please look out for details on the Parish Web site, Facebook page and notice boards.

Nature Recovery

Plumpton Parish Council together with the Plumpton and East Chiltington Wildlife Group are developing a nature recovery strategy for the Plumpton Parish to help tackle the biodiversity crisis and support the South Downs National Park ReNature initiative. We have contracted with 'Wild Business' to carry out the work and produce a report which the Parish Council, with the community's help, will be guided by. The South Downs National Park will fund 50% of the cost of this project which will map and assess the current network of green and blue spaces in the Parish and identify nature recovery opportunities.

Speed Indicator Sign

The Vehicle Activated Sign has been operating on Station Road for nearly 2 years now. The sign was bought by the Parish Council and is managed with the help of volunteers. Each location of the sign is licensed as an approved location by East Sussex Highways. The sign not only gives drivers a visual indication of their speed but also records every vehicle movement in both directions. There is no

identification of vehicle number plates, but the device gives us useful statistics on the speed and number of vehicles on Station Road both northbound and southbound. We can now see a trend of increased vehicle movements – up around 2% over the last six months when compared to the same period in 2023. The speed of vehicles remains stable with 85% of drivers respecting the speed limit. The overall average speed is below 30mph despite a few irresponsible drivers sometimes exceeding 60mph in both directions.

New Pavilion Project

The planning application for the new Pavilion was unanimously approved by Lewes District Council at the district planning meeting held on 4th December. The hard work of fund raising can now begin and the Pavilion working group will have to make hard decisions to make the plans a reality. If you feel you have any skills that would benefit the project then the working group would be delighted to hear from you.

Web Site renewal

The council has been working towards creating a new Parish Council Website which we hope will launch in January. The website is an official platform for distributing Parish Council agendas minutes, committee agendas and minutes plus of course news on council activities and any relevant information the council feels the residents should be made aware of - such as the Lewes Local Plan mentioned above for example. We expect the new site to be easier to manage and more importantly easier for residents to use and find the information they need.

- If you want to help and have a say in how your village runs and engage with the community then why not sit on the Parish Council? Please contact our Clerk Anita Emery if interested.
anita.emery@plumptonpc.co.uk

The date of the next Parish Council meeting is **January 14th, 19:45hrs** at the Village Hall. Members of the public are welcome to attend.



**Floral Art
by
Nichola Massingale**

Weddings
Funerals
Hospitality
Special Occasions

Tel. 07970 462337

Email: nichola@massingale.co.uk
www.plumptonflowers.co.uk

Rupert Thacker
Furniture Restoration Services

*Including Furniture repairs, Polishing etc. of
Antique, Contemporary, and Reproduction
Furniture*

Fletching, E Sussex, TN22 3TQ

Tel : 01825-713111 (Workshop)
Mobile: 07950-035044
Email: sales@rupert-thacker.com
Website: www.rupert-thacker.com



- All aspects of tree work
- Hedge maintenance
- Planting
- Fruit tree pruning
- Traditional hedge laying
- Woodchip supplies

Contact Oliver Marlow
07507 523748 / 01273 891702
oliver@newleaffreesurgery.co.uk

newleaffreesurgery.co.uk

**A clean carpet isn't all we
ServiceMaster Clean guarantee.....**

- Carpet Cleaning & Repairs, retuffing & reweaving
- Upholstery Cleaning
- Rug Cleaning including Wool & Silk
- Curtain Dry Cleaning on-site-at-the-window
- Carpet Moth Treatment Service
- Fire & Flood Clean-Up Service

Now celebrating 24 years of providing 1st class service in Plumpton, Plumpton Green, East Chiltonton, Lewes & Brighton.

Call Paul or Liz on 01273 733339

For a free no-obligation quotation
Or email paul@servicemasterbrighton.co.uk

See our website for special offers
www.servicemasterclean.co.uk/plumpton-green

Treats by Post - Brownies - Gift Boxes
Hand Painted Cookies - Cupcakes
Celebration Cakes
Wedding Cakes

The Crafty Cake Lady
We Bake with Love

www.thecraftycakelady.co.uk

FREE LOCAL DELIVERY
07725979297 / 01273 891067




The Greenhouse

B&B in the heart of Plumpton Green

Separate annex, sleeps 4

Previously known as 'Edgington Cottage'

To book please call Clare

07747 036049



Planning and Development Updates

The Parish Council continues to work closely with residents to address concerns about local planning and development. Recent discussions have focused on maintaining the balance between preserving our rural character and supporting sustainable growth.

One key area of focus has been the ongoing review of proposed changes to local footpaths and rights of way. Your feedback has been invaluable, and we encourage you to share further thoughts during our next public meeting on 8th January. Together, we can ensure that any changes reflect the needs and wishes of our community.

Highways and Transport

Addressing road safety and transport issues remains a core focus. Following several reports of speeding through the village, we have submitted a request for additional traffic-calming measures to East Sussex County Council. We will keep you updated on progress.

Meanwhile, the flexibus community bus service continues to provide an essential lifeline for many residents covering about 90% of East Sussex and some key destinations outside such as the Princess Royal Hospital. You can book up to 14 miles from your pick up point so do give it a try. It operates Monday to Saturday 7.00am to 7.00pm and you can contact the service on 01273 078203.

Bin Collection

Some people have mentioned the bin collection day keeps changing. If you need to check when the collection is for your road you can look it up following this link: <https://www.lewes-eastbourne.gov.uk/article/1158/When-is-my>

-bin-collection-day. Over the Christmas holidays, bin collection days often change so it is worth checking the site or the updated calendar which every house should have received.

Tree Planting

Thanks to all of those that came to help plant saplings around the new container in East Chiltington. These will grow up and create a living screen around the container.

Merry Christmas and Happy 2025!

Finally, a heartfelt thank-you to everyone who has contributed to parish life this year. Whether you've attended meetings, shared ideas, or volunteered your time, your involvement is what makes East Chiltington such a special place to live.

If you're interested in playing a more active role, why not consider joining the Parish Council? We are always keen to hear fresh perspectives and ideas.

Wishing you all a peaceful winter and a joyous holiday season. As ever, we're here to listen and support you. Feel free to contact the council at parishclerk@eastchiltingtonpc.gov.uk.

TECT Update East Chiltington

Thank you so much to you all for your cooperation and mindfulness regarding the sheep in the TECT field these past couple of months. The sheep will be off the field in December and some ewes will be returning to graze in the New Year. We will keep you all informed of when they will be returning.

Dates for your diary

- Wassail - Sunday 12th January 2025. Meet 4.30pm @ Hollycroft
 - Community Dog Walk - Saturday 18th January 2025. Meet 11am @ The Jolly car park
 - TECT Tidy volunteer group - Sunday 2nd February from 10am
 - Date TBC - TECT Tree Planting Session
 - Monday 18th February - TECT Fundraising quiz @ The Jolly Sportsman 7pm.
- Please visit <http://theeastchiltingtontrust.org> for more information and to get in touch

Daniel Stewart-Roberts District Councillor

The next stage of consultation for the new Lewes District Local Plan starts on Monday 6 January and will run until Friday 28 February. This is the first phase of a two-phase process, with the second phase happening later in 2025. This may sound like overkill, but it is driven by the need to meet the key deadlines while the goalposts are moving – Central Government is planning major changes to the National Planning Policy Framework but has not announced them yet. Phase one will focus mainly on the detailed policies and urban sites. Rural sites will be consulted on in phase two.

I know that there are some people who say: "What's the point in responding to these consultations, they don't listen to us anyway". I have worked with the council officers over the last few months as a member of the Local Plan Steering Group to finalise the latest iteration of the policies and I know that is definitely not the case. If you are interested in finding out more, you may want to attend a webinar and Q&A that is being held at 5pm on Tuesday 14 January. The best way to receive details of this and other events is to sign up to LDC's Keep me posted service and tick the Lewes District Local Plan box (<https://www.lewes-eastbourne.gov.uk/keep-me-posted>).

If you haven't already discovered it, I would heartily recommend the South Downs National Park's YouTube channel, which is full of videos about the great work that the Park does to protect and improve access to this special landscape. As the District's representative on the Park Authority I am regularly amazed by how much is done with relatively limited resources. The 2024 End of Year Review film, which will be available on the YouTube channel from 31 December, should give you the same impression.

Email: daniel.stewart-roberts@lewes.gov.uk
Telephone/text: 07966 338429

Plumpton & East Chiltington Branch of the British Legion



WE NEED YOU

Our branch has been in existence for many years (nearly 100 years) and over time our membership numbers have fallen to such a degree that we have received an ultimatum, unless we increase our numbers the branch will close and we will lose our identity and our named banner which has been proudly borne over the years honouring our villagers who died in the two world wars. This will be reclaimed and destroyed.

We feel that many villagers would not wish this to happen, so we are asking you to help raise the numbers to continue our existence.

Membership is open to all, ex service people, family members and others who wish to join. Annual membership fee is just £20, with branch affiliation fee of £2 (just 42p per week). Not a large sum of money but it will help us maintain our existence and retain our distinctive banner which otherwise would be sorely missed at our remembrance services.

Membership forms are available from Jo Taylor MBE 01273 890450 or David Stone 01273 890005

Or online to British Legion stating affiliation to Plumpton & East Chiltington branch.

Thank You

TREE WISE

Tree Surgery • Hedge Maintenance
Fire Wood

Stump Grinding • Strimming
Woodland Management Schemes

Experienced • Insured £5m
Free Quotation

BSc (Enviro Mgt) • LOLER Inspector
NPTC

Charlie Layfield

Office: **01825 724655**

Mobile: **07888 838423**

www.treewise.co.uk

 Checkatrade

Heath Farm Holiday Cottages

South Road, Plumpton Green

Three 4 star cottages sleeping
two, four and six.

Suitable disabled

Minimum 2 night stay

Regret no smoking or pets.

01273 890712

www.heath-farm.com

Help You can Trust

Services Provided: Companionship, Dementia Support, Domestic Duties, Medication Assistance, Gardening (basic), Personal care, Transport services, Meal preparation, Post hospital care, Respite care, Secretarial and Administrative assistance, Shopping assistance, Social activities.

Contact: Anna Rummeli

Mobile: 07511 351 807

Email: aowellness1@gmail.com



Member of the National Association of Care and Support workers



**GRANT DEJONGE
PAINTER & DECORATOR**

01273 891872

07495 099708

grantdejonge@yahoo.com

**All jobs considered
in Plumpton &
surrounding areas**

Plumpton Pilates

Morning and evening group classes
in Plumpton Village Hall.

1:1 Pilates at home also available.

Please contact Charis 07881 825007

charispilates@gmail.com

WEDDING VIDEOGRAPHER

Capture the beauty of your special day with a film to last a lifetime

• Professional & friendly • Range of packages • Tailored to you

Contact me for examples of work and a chat

☎ 07484 602503

📧 joshuaawhittington

✉ whittingtonjoshua0@gmail.com



Singing Mamas is coming to Plumpton!

Hello! My name is Josie Peach and I have just completed my training to run Singing Mamas groups.

Singing Mamas is a relaxed, nourishing and nurturing singing group for all women, where songs are taught by ear and no singing experience is necessary.

All are welcome – bumps, babes, toddlers, grandmothers, women without children, LGBTQIA+.



Singing Mamas is for non-singers, shy singers, confident singers... and everyone in between! As children, we sing freely and joyfully, but sometimes voices get shushed or told they're not good enough. Singing can become scary or overwhelming and we forget how. This is your invitation to find your voice again.

Singing together is clinically proven to improve wellbeing and treat (postnatal) depression and anxiety. Be nourished, find joy and company in Singing Mamas!

Please get in touch if you would like to join the waiting list or would like more information. A group will be starting in Plumpton in the New Year....

josiepeachy@yahoo.co.uk

07842 356581



St Peter & St James Hospice
Hospice care in the heart of Sussex

Plumpton Support Group

for St Peter & St James Hospice Update

Another very successful year for the Support Group. The outstanding event of this year was the Jumble Sale which raised £1,357.84 which is a record for any Jumble Sale held in the Village.

The total raised from all the events in 2024 is a staggering £16,940.29.

None of the events that are organised could go ahead without the help and support of those who volunteer to help, make cakes, donate bottles of wine, raffle prizes or tombola prizes. A huge "thank you" to all of you, too many to mention by name.

After applying Match Funding and Gift Aid the Festive Fair raised £7,178. This is the first event of our fund-raising year, so a very good start.

Events for 2025

Sausage and Mash Quiz Night – 22 March

Doughty's Fabric Sale – 7 June

Open Garden – The Old Mill House – 29 June

Jumble Sale – 19 July

Festive Fair – 29 November

If you would like to help at any of the events, then please get in touch. Sue Akers – 01273 891701 or email sueakers@hotmail.com

Thank you for your continued support.

P. M BUILDERS

5 School Cottages,
East Chiltington

**For all your
building
needs**

Tel: 01273- 890964
Mobile 07813 114470

YOUR LOCAL BUILDER



Your local friendly family run garage with over 40 years experience in all aspects of vehicle repairs, old, new, classic, sports & prestige.

**All Makes & Models • M.O.T's & Servicing • Repairs
Diagnostic Specialists • Wheel Alignment
Tyres & Exhausts • Clutches • Cambelts • ECU Remapping
Air Conditioning • Brakes • Brake Disc Skimming
Welding & Fabrication • Engine Tune-ups
Petrol Injector Testing & Servicing • Diesel Specialists
Carbon Cleaning • Courtesy Cars Available**



www.rwmotorengineeringltd.co.uk

Unit 1, The Old Brickworks,
Station Road, Plumpton Green
East Sussex BN7 3DF

Tel: 01273 891393
Email: rwengineering@live.co.uk



PHYSIOTHERAPIST

Amy Cooper BSc (hons), MSc, HCPC, MCSP

Physiotherapy assessment and treatment in the comfort of your own home.

All musculoskeletal, neurological and respiratory conditions treated.

Remedial massage/Sports massage
Manipulation Mobilisation
Exercise prescription Dry needling
Electrotherapy Work station assessments

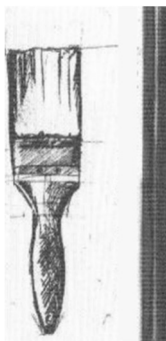
Telephone 07866 762999
accooper362@gmail.com

Painter

Decorative Paint Finishes,
Domestic, Business
& Building Trade
Michael Webber

michael.webber6@yahoo.co.uk
01273 890779
07880 558 556

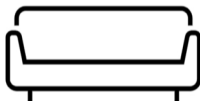
2 School Cottage
East Chiltington
Lewes BN7 3AY



SUZANNE'S UPHOLSTERY

(AMUSF Qualified)

- ❖ Bespoke Upholstery
- ❖ Chairs
- ❖ Headboards
- ❖ Footstools
- ❖ Soft Furnishings



Email - suzannes_upholstery@hotmail.com
Mobile - 07738 305342
Instagram - @suzannes_upholstery



07702208475
ODINTUNE COTTAGE EAST CHILTINGTON
deadlyseriouspestcontrol@gmail.com

DR's Diary

A Step Back (in doing) Time!

When we put our laptop away and opt for some reality Christmas shopping, Horsham is our preferred destination. There's a diverse selection of independent shops and a modern shopping centre. There is also the medieval part of town, surely one of the best of its type in England, never mind Sussex. And that's why I'm here, to visit Horsham museum, itself housed in a listed oak framed building, parts of which are 13th century.

But first things first, the overindulgences of the festive period have worn off and I'm in need of some substance. A short walk from the museum is the old Town Hall, built in 1812, replacing several earlier ones, now part of the Bills restaurant chain. Other restaurants/pubs are available, many with equally historic pedigrees, but they're for another day.

Upon finishing my brunch, I get chatting to my waitress, a font of local knowledge who had written a thesis on the history of Horsham for her graduation. I said what a lovely building to work in and it was good that it had been sympathetically adapted as a restaurant. Business was a bit quiet... 'we've got cells in the basement' she said, 'would you like to see them?' This was not a chance to miss. There are 2 rows of 6 wooden cells. On the inside of the doors a flap drops down and doubles as a table to eat off. These were installed circa 1900 when it was used as a courthouse to house prisoners awaiting trial. The most famous being John Haigh, the acid bath murderer, before being transferred to the court at Lewes.

I ask my guide if they have porridge on the menu. She smiles, but inwardly I'm thinking jokes like that get you banged up and thrown away the key!

I escape with my freedom and head to the museum. As you enter, there is a room on the left with an exhibition by contemporary local artists. Moving on, it's apparent that this is a warren of small rooms and that the building is as interesting as the

exhibits. Outside is a large courtyard garden, a large wooden building houses vintage bicycles and Horsham fire brigade memorabilia. Opposite this is an old Sussex barn that once stood on Hills farm before being dismantled, bit by bit and being reconstructed here. Inside are all things agricultural and the walls being adorned with old trade signs, many discovered when modern ones were removed.

The museum houses more subjects than space will allow me to go into here, we go back to prehistoric times and the geology that led to the formation of the Weald, Downs and greensand regions. There are bones belonging to a type of Iguanodon discovered locally and named Horshamasaurus because it's the only one. All this makes Stonehenge seem like a new build from Elvian homes. Pause to think... did the druids ever find a buyer for it?

There are contributions from the Celts, Romans, Saxons, etc., to more recent times.

Locals : Raymond Cusick gets a mention for designing the ultimate baddie, The Dalek. Julia Donaldson of Gruffalo fame, Hilary Bell and of course, Percy Bysshe Shelley.

There are also some nice 18th century longcase clocks made by local makers.

There is just too much to take in on one visit so I will return...after I've had my porridge.

BIG GARDEN BIRDWATCH

Let's Have A Community Birdwatch
Saturday 25TH January 2024
at 9.30AM

at
The Old Mill House, Plumpton Lane
Coffee and Refreshments will be served
(after you've done the bird count!)

**All Welcome, especially CHILDREN,
Spaced will be limited**

BOOK YOUR PLACE BY EMAILING
carolenicholson3@outlook.com or
plumptonwildlife@gmail.com

It's time for a Macmillan Coffee Morning and you're invited

Let's do whatever it takes
to support people living with cancer.

Place: Plumpton Village Hall

Date: Saturday 1st February 2025

Time: 10am - 12pm

Contact: Angela Spinks angelajanespinks@gmail.com
Liz Platt-Wood lizplatt2011@gmail.com

Any donations of cakes or help on the day would be great! Thank you!

Skip breakfast and fill up on cakes - there will be take-aways too!

Never a better reason to enjoy a coffee (or tea, hot chocolate, squash...)



MACMILLAN
CANCER SUPPORT

 Registered with
FUNDRAISING
REGULATOR

Macmillan Cancer Support, registered charity in England and Wales (261017), Scotland (SC039907) and the Isle of Man (604). Also operating in Northern Ireland. MAC19933_InvitePoster

Sean Mannion Carpentry 07958647918 seanmannion67@gmail.com

Skilled carpenter with 30+ years' experience.

Services include: Bespoke fitted furniture Heritage timber building restoration
Garden decking Raised garden beds
Door hanging Timber cladding
Understairs storage solutions First fix carpentry

Harrods trained, I pride myself on quality of workmanship and reliability. I can provide a portfolio of previous work on request. Fully insured.

Proud Sponsor of Plumpton Green Bowls Club

www.seanmannioncarpentry.co.uk

SPEAK FRENCH . . .

SPEAK ITALIAN

Small local classes (max 4)
Flexible times Beginners & Intermediate
Individual FaceTime lessons £25
NEW! Walk and talk Conversation small groups; "Promenade" & "Passeggiata"

Contact Sue Strong **07900 594375**
email: seegreenwaitrose@gmail.com



LEARN HOW TO SHOOT A BOW

Plumpton Bowmen hold **Beginners' Courses** twice a year in April and October on the Playing Field.

We hold **Have-A-Go** sessions the 3rd Sunday of the month from April to August from 2pm to 3.30pm.

For further information see:
www.plumpton-bowmen.org.uk

HOME CHARLES CARS

Plumpton Based

Private Hire Taxi Company

- AIRPORT TRANSFER SERVICE
- PRESTIGE VEHICLES
- COMPETITIVE TAXI PRICES
- CORPORATE ACCOUNTS
- CREDIT CARDS WELCOME
- SALOONS AND ESTATES
- PROFESSIONAL, RELIABLE DRIVERS

077 344 89222

homecharles@btinternet.com

Guy Sumners

Window Cleaning

J&B Services

- Conservatory and roof
- Fascia
- Gutters clearing
- Cladding
- Solar panels
- Patio Jet washing etc.

Betty: 07941 899324

Jerry: 07941 899754

email: info@jandbcleaning.co.uk

website: jandbcleaning.co.uk

Facebook: J&B Cleaning Services

Plumpton's New Year's Day Walk

Meet at Plumpton Station at 10.30am

The route will start at Plumpton Station, go out to East Chiltington and back to Plumpton.

All on tracks and small roads with no stiles this year.

Mulled wine and blackcurrant squash at the half way point.

For any queries, contact:
plumptonvillagesociety@gmail.com



HOME • BAKING

jenny's



Celebration Cakes, Cupcakes, Traybakes.
Catering for any occasion: Afternoon Tea or
Finger Buffet - Birthday, Anniversary, Funeral.

Jenny's Home Baking
 07711 562905
 jennythebakerhonest@gmail.com

Andy Westgate

Local plumpton based
gas safe registered
plumbing & heating
engineer



07415529656

awestgateheating@hotmail.com

Joe's Bees

Have you always wanted honey bees but always felt too inexperienced to keep them? How about a personal beekeeper then!

Hiring Joe from Joe's bees to manage your hives is the perfect way to solve this issue!

What this entails...

- He will teach you how to look after your bees
- He will manage your bees for an hourly rate of £25 (4 hours a week max in summer)
- He will harvest and jar your honey (jars will come free!) you will be charged a 2 day rate
- He will help you set up and collect your bees at the beginning of the season for a fair price!

Joe's bees is all about working with nature and wildlife in an environmentally friendly way. Not only is Joe a beekeeper he also does extra work such as: creating wildflower meadows, soil management, gardening advice and environmental farming advice.

So you will be in good hands!



Instagram - @_in_the_hive_
joethebeeman@gmail.com
07842862709



Tai Chi with Jo

Tai Chi Classes in Plumpton Green & Lewes

Beginners welcome

No experience necessary

tel: 07986 713974
email: jo@taichithwithjo.co.uk
web: www.taichithwithjo.co.uk

Forest Friends

Woodland crafts, music, nature
connection, wild-craft skills and
outdoor play for children aged 1-4
£10 per session paid termly
or £12 drop in rate



Now on Fridays: 10-11.30am

By the Ferrings Lake in East Chiltington

contact Sarah on 07980 006680 or sarah@littleseeddesign.com



The Jolly Sportsman

Idyllic, cosy, country pub with rooms

- * The pub will be closed on Monday 13th and Tuesday 14th January for our Christmas staff celebration
- * Set Menu (lunch 12-2pm & dinner 6pm-7pm) on Mondays, Wednesdays and Thursdays. 2 courses for £22, 3 courses for £28.
- * 25 mile Chef Menu - Every Saturday night - £45 per head for four courses - Booking essential

To book a table please visit www.thejollysportsman.com or call 01273 890400.

We hope to see you!

Chapel Lane, East Chiltington, Lewes, BN7 3BA



PLUMPTON PANTOMIME SOCIETY proudly presents its
50TH ANNIVERSARY PRODUCTION

Once Upon a Time *in* **PANTOLAND**

AN ORIGINAL FAMILY PANTOMIME

Written by
ALEX JACKSON

JANUARY 2025

SUNDAY 19TH

at 2.00pm and 6.00pm

WEDNESDAY 22ND

THURSDAY 23RD

FRIDAY 24TH

SATURDAY 25TH

at 2.30pm and 7.30pm

Weekday performances start at 7.30pm

This pantomime mash-up has all your favourite pantomime traditions and much loved characters all wrapped up in a completely original fairytale.

The perfect way to celebrate a significant milestone!

PERFORMED AT

**Plumpton Green
VILLAGE HALL**



TO CHECK AVAILABILITY AND TO PURCHASE TICKETS PLEASE GO TO
www.ticketsource.co.uk/plumptonpanto
OR CALL OUR BOX OFFICE ON 01273 890 450

BOOKING FEES: Tickets purchased via TicketSource incur a small booking fee. There is no booking fee on tickets bought via our box office.

Script kindly presented in agreement with alexjacksonpantomimes.com

Rev. Anne Dunlop

I always order my next year's diary in good time. I like to have a paper diary. It feels substantial as if the year ahead has the weight of time and purpose. You cannot annotate Google diary with little notes to self; 'take borrowed book' or 'avoid Burgess hill traffic', or a note to remind yourself of something you need to do before that appointment booked long in advance. There is something comforting about having it with me, a sense of control over my life, albeit subject to sudden change.

Clergy who still use paper diaries fall into two groups. There is the large, thick, heavy 'Desk Diary' which, of course, does not remain on the desk but is carried with purpose and importance indicating you need at least a whole page to write down your many commitments. I tried these for a couple of years and looking back at them (why do we keep them?) I find the pages littered with many a thoughtful doodle, shopping list and just the odd commitment. They were also a pain to get into one's handbag but worked very well if you carried a briefcase, which added to the overall appearance of efficiency (although not in my case). Others of us opt for the slim-line version usually with an attractive William Morris cover design. Easy on the handbag, just enough for the notes and has the advantage of a week at a time.

When my new one arrives, I open the package with mixed feelings. Analysing this as I write, I can hear a psychologist friend, well trained in Cognitive Behaviour Therapy, talking about apples and oranges. Allow me to explain. The idea is to change how we think about something. My diary is a good example. Here are the weeks ahead, what might they bring? Will I still be here by next Christmas (not necessarily removed by death but...well who knows)? What are the challenges and difficulties I might encounter and so on? It is not an altogether a pleasant experience. Making the first entry is stepping into the unknown.

This, my friend would tell me, is my 'apple' approach (nothing against apples, this is just and illustration, keep with it). What I should do is to rethink my approach, give it a different

name 'oranges'. To greet my diary with zest for life, see its empty pages waiting to be filled with good things, new encounters, new things to learn and do. Perhaps you get the picture; it is really just a change in approach, a deliberate choice to look at something from a different perspective. Of course it will not all be oranges, but neither will it all be apples. Doing this encourages positivity so I begin. I opt for the least challenging, next dental appointment, hairdresser, car MOT. By now I am feeling more comfortable and braver; I enter the forthcoming weddings and note the date of Easter. I enter birthdays and my planned holiday in May. It's beginning to fill up now and along with that comes a sense of control that somewhat allays my previous apprehension. The same psychologist told me that our happiness is directly correlated to our sense of control, there is some truth in that. 'Boldly going where we have never been before', is something we cannot avoid. Here is this New Year and we step into it together. For me already it is a more settled year as I have been licenced in post by the Bishop for a further two years until November 2027. This gives me a good reason to plant some daffodil bulbs in the new Rectory garden. I'll just make a note to do so again next year.

And I said to the man who stood at the gate of the year:

"Give me a light that I may tread safely into the unknown".

And he replied: "Go out into the darkness and put your hand into the Hand of God. That shall be to you better than light and safer than a known way".

So I went forth, and finding the Hand of God, trod gladly into the night. Minnie Haskins

Rev Anne Dunlop



Church Services for January 2025

Sunday 5th January All Saints	Christmas 2 11.00am.	Family Communion
Sunday 12th January All Saints	Epiphany 1 11.00am.	The Baptism of Christ Plough Sunday Family Communion
Sunday 19th January All Saints	Epiphany 2 11.00am.	World Religion Day Family Communion
Sunday 26th January All Saints Church	Epiphany 3 11.00am	Family Communion
Sunday 2nd February All Saints	The Presentation of Christ in the Temple Candlemas 11.00am	Family Communion

Every Tuesday- A weekly time of reflection and a short said Communion Service is held at All Saints Church at 11.30am

If you are unable to make your way to any of the church services, then please contact one of the churchwardens who will arrange transport.

For general church matters please contact Rev Anne Dunlop 01273 890006 revannedunlop@gmail.com in the first instance or one of the Churchwardens.

East Chiltonton - Janice Doran 07484 348341 jncdoran@gmail.com

Plumpton Howard Wood 07794484373 hawood167@hotmail.com

Want to hire the Church Annex? Please speak to Bob Doran on 07484138203

Help Needed

Would you like to volunteer? We are looking for additional helpers :-

To transport members of our congregation to church services

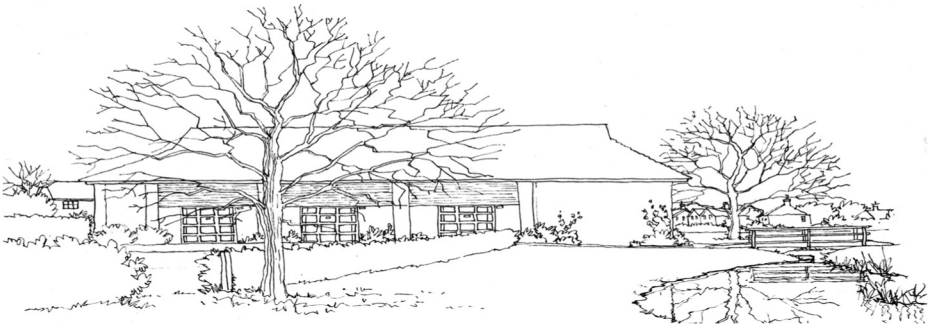
To become part of a team which cleans the church or annex

To help with hospitality providing teas and coffee after church services

To provide a dish for our Tuesday lunches in the church annex approximately once every five weeks

To provide certain handy person duties

To help with mowing around the church during the summer months



VILLAGE EVENTS CALENDAR

VH = Village Hall

HQ = Scout HQ

TC = Tennis Club

StM = St Michael's

ANX = Church Annex

PAV = Pavilion

ECC = East Chiltington Church

Sch = Plumpton School

ALC = All Saints Church

BOOKINGS

Village Hall & Pavilion:
Church Annex

Jane Donovan 07747 050903 or 01273 891036
Bob Doran 01273 890211 or 07484 348341

1st Jan - New Years Day Walk 10.30 am Plumpton Station

19th - 25th Jan - Plumpton Pantomime Society 'Once Upon a Time in
Pantoland'

VH

25th Jan - Community Birdwatch 9.30am Old Mill House

1st Feb - Macmillan Coffee Morning 10 - 12

VH

22 March - St Peter & St James - Sausage and Mash Quiz Night

VH

7th June - St Peter & St James - Doughty's Fabric Sale

VH

29th June - St Peter & St James - Open Garden - The Old Mill House

19th July - St Peter & St James - Jumble Sale

VH

29th Nov - St Peter & St James - Festive Fair

VH

Plumpton & District
Footpath Society

PROGRAMME FOR December 2024



Sunday January 12th - A Lewes Town walk 3 miles approx. starting at 10.30.

Walk Leaders - Alan and Jenny Greening (01273 890414 or 07929713739)

Saturday 25th January - A 5 mile circular Lewes and Kingston walk starting 10.30 at 11
Montacute Road, Lewes

Walk Leaders - John and Judy Lawrenson (01273472277)

Wednesday 29th January - Talk at Plumpton Village Hall by Chris Horlock "Sussex
Scrapbook" - 1.45 for 2pm start



PLUMPTON PANTOMIME SOCIETY proudly presents its 50TH ANNIVERSARY PRODUCTION

50 Years of Pantomime in Plumpton

What makes the perfect **pantomime**
For all the **family**?
Well, **songs** and **dance** and corny **jokes**
And **slapstick** comedy.

You need a **wicked witch** to boo,
A **heroine** to cheer.
A **clown** for all to laugh at,
Some scary **ghosts** to fear.

A **dame** who's quite ridiculous,
A dreary sad old **king**.
All in a **crazy** storyline.
Now, is that everything?

Why no, the **chorus** line is key,
Their practised moves such **fun**.
So great the **choreography**
They *almost* move as one!

With bright and showy costumes,
An arty, crafty **set**.
With props like **custard pies** to throw,
A spectacle you'll get!

And when the **band** begins to play
It's tuneful **melodies**
Let your anticipation rise:
It's *you* we aim to please.

For finally, the **audience** –
It's *you* who make the show.
 Participation is a must.
"Oh, yes it is!" we go!

Pantomime Word Search

Now, take the **bold type** words from the poem and see if you can find them in the grid below?

C	R	A	Z	Y	O	S	E	K	O	J	E	R
O	H	Y	E	S	I	T	I	S	B	A	N	D
N	W	O	L	C	E	N	T	R	I	M	I	S
S	P	O	R	S	G	H	O	S	T	S	O	U
W	I	C	K	E	D	W	I	T	C	H	R	R
A	E	M	I	M	O	T	N	A	P	P	E	O
U	C	H	I	T	S	G	N	O	S	I	H	H
Q	N	S	E	I	P	D	R	A	T	S	U	C
P	A	R	T	I	C	I	P	A	T	I	O	N
E	D	P	M	K	C	I	T	S	P	A	L	S
W	M	E	L	O	D	I	E	S	C	H	A	M
Z	O	A	P	N	U	F	A	M	I	L	Y	L
D	A	U	D	I	E	N	C	E	I	D	U	A

Andy Starling, Nov 2024



Plumpton & East Chiltington Good Neighbours

Telephone Contact 07478 524152

Do you need help or someone to talk to? We are a group of local volunteers who offer a befriending service and help with everyday things such as shopping and simple household jobs, to anyone needing support. We can help on a regular or one off basis and, there are no charges associated with our help, with the exception of travel costs if we transport you somewhere such as to the doctors or another similar appointment. All our volunteers are DBS checked.

It doesn't matter what age group you are in or whether your family is local. If you feel you would like our help or, to talk about how we may help you, please phone Gina or Alison on the above number or, you can email us at: peccgoodneighbours@gmail.com

New volunteers are always needed and very welcome. If you are interested in joining our team please get in touch on the contact details above.

JOURNEY OF THE MAGI

On a blustery November evening we enjoyed a modern experience of dance and drama from the Springs Dance Company. Thank you all who braved the weather and made this a special occasion. Thanks also to those who hosted the dancers overnight and the many others who made this all happen. Hopefully something we can do another year.

Rev Anne

Uckfield, Lewes & Newick Arts Society

**January 8th 2025 2.30 in the
Civic Hall Uckfield**

From Coalbrookdale to the Crystal Palace

This lecture will be taking us back a few years to the 1700s and the Industrial Revolution. Here in his factory at Coalbrookdale the Quaker, Abraham Derby, pioneered a new technique of iron-ore smelting enabling iron to be mass produced. His Grandson went on to build the beautiful single span Iron Bridge across the Severn.

Others were quick to take advantage of this new technology, Wedgwood, Telford and the Stephensons all benefited. The prize must however go to the Crystal Palace built originally in Hyde Park in 1851. Full sized elm trees were enclosed within its shining glass and metal walls. It was three times larger than St Paul's Cathedral and the showcase of all that was modern at the time.

Jo Walton at the age of five decided she wanted to become an archaeologist but changed her mind when she found out how cold and wet it can be digging in the rain! Instead her love of history led her to working at Christies and being a guide at Tate Britain and Tate Modern. Combining teaching and lecturing she has also run a specialist Art bookshop in London.

We look forward to welcoming you. If you want to become a member of our society, please contact me for further information. Visitors of course are always welcome, £8 on the door please.

Annette Shelford annette@shelford.net

Plumpton Village Society

held a tea party in the Church Annex on Saturday, November 16th for all the volunteers who have helped the Society, with the village events it has organised, since it started in April 2020. Without such help, there would have been no Strawberry Fairs, Apple Days, Village Handbook, Jubilee and Coronation Celebrations, as well as the promotion of local activities and businesses.

Thanks must go to everyone who has contributed to village life in this way, whether regularly or occasionally and, with your continuing support, we look forward to more events in Plumpton.

Anyone not on the volunteers list who would be willing to give just one hour of their time to the Society's events, please contact plumptonvillagesociety@gmail.com



Pop in cafe

First of all ,a very happy new year to all, especially our regulars. With immediate effect we will be amending our opening hours to the new times of 10.30 - 12.30. Despite this small change we still are pleased to see any new face that wants to "pop in" on a Thursday morning.

Chailey & Newick Painting Group



Huge thanks to all the visitors who came to our art exhibition in November – around 400 of you, something of a record. We hope you all enjoyed it as much as we enjoyed welcoming you and sharing with you some of our year's endeavours. We really appreciated the many comments about the increasingly high standard of the work on display - but still aim to do even better next year!

The winner, this year, of the Graham Barber Memorial Trophy was Hagop Kasparian, his wonderful painting, 'Reflections at Low Tide, Pin Mill', gaining the most votes for favourite painting. Congratulations, Hagop, very well deserved.

Our original art tombola was a sell-out which, together with your very generous donations both at the exhibition and on the Just Giving page of our website, means over £1,000 has been raised for St Peter & St James Hospice – another very big thank you, we know how grateful the Hospice always is for much-needed funds.

For those who were unable to come to the exhibition – or wish to take another look - the majority of the work on display can be viewed on our website www.chaileyandnewickpaintinggroup.com . The Just Giving page in favour of the Hospice is always open for donations there too, you can see what we get up to on Monday mornings, get in touch with us or perhaps download an application form for our waiting list if you would like to join us.

We look forward to seeing you all again next year, November 22nd & 23rd.

NEED AN ELECTRICIAN ?

KJB ELECTRICAL LTD

Your local electrician, based in Plumpton Green.

Part 'P' compliant & Fully Insured
For a free no obligation quote,
Call or Email Ken

T. **07766455378**

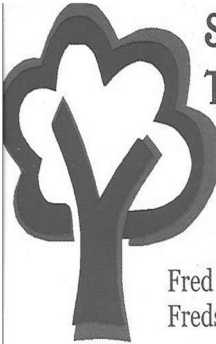
E. **kjbelectricaltd@gmail.com**

Love Your Clothes

**Get Ready For
That Special Occasion/Holiday
Just Revamp, Shorten, Mend**

I make curtains/cushions, kids stuff &
lots more. **Give Me A Ring**

Fran: 01273890731, 07719539513



**SYMES
TREE SURGERY**

ALL ASPECTS OF TREE
SURGERY

HEDGE CUTTING

LOGS AND WOODCHIP

Fred Symes 07889420474
Fredsymestree@gmail.com



Experienced · Insured
Reliable

For a free friendly quote
phone Nigel Clough
on Newick 01825 723138
or **07504224335**

- Fencing
- Gate's
- Patio's
- Path's
- Hedge Cutting
- Rotovating
- Planting
- Shed
- Bases
- Lawn
- Mowing
- Turfing

Making
Mending
Altering



dodiesews.co.uk



Seamstress services
Dodie - **07934495628**

John Church electrician

Professional, Courteous

Local Electrician

For all your electrical needs

Fully Qualified - Part P Registered
All Work Guaranteed - Fully Insured

Call John
01273 900251

info@johnchurchelectrician.co.uk



OJH ROOFING

FOR ALL OF YOUR ROOFING REQUIREMENTS

07469944765

OJHROOFING@OUTLOOK.COM

WWW.OJHROOFING.COM

3 HOLLYCROFT
EAST CHILTINGTON, LEWES
EAST SUSSEX BN73AZ



CHAILEY REPAIR CAFÉ - MORE THAN 1000 REPAIRS THIS YEAR!!

As we get ready for our final Repair Café of 2024 on 14th December, we are looking forward to our 7th year of repairing your broken stuff. Incredibly, we attempted well over 1000 repairs this year and over 6000 items since we first opened our doors in 2018, when we were one of the very first Repair Cafés in Sussex.

We always get a lot of Christmas tree lights coming in at this time of year - if you have the old-style lights with push in bulbs, we may be able to help with spares, but there are many different types, so at worst we can tell you what to look for and where to find them... And of course, our sharpening team will be busy, as always, at Christmas. We now have two state-of-the-art sharpening machines to sort out those knives ready for the turkey!

Our new posters and flyers with all our 2025 dates are now available at the Café; pick some up and spread the word wherever you live!

The success of Chailey Repair Café has been due in great measure to the support we have received from all of you in the local community - if you didn't have broken stuff, we'd have nothing to do! We have saved a lot of things from finding their way

into landfill as well as providing an opportunity for folks to understand more about what makes their household items work!

You'll find us at St Peter's Church, Chailey on the A275 at Chailey Green on the second Saturday of each month (i.e. 14th Dec, 11th Jan, 8th Feb and so on) between 1000hrs and 1300hrs where we'll have a full Café service including our legendary cakes.

If you'd like to contact us, please email us at chaileyrc@gmail.com and we'll see what we can do to help.

We look forward to seeing you and your broken stuff very soon and wish you all a happy and successful New Year!

Bryan McAlley and the Chailey Repair Café team

Chailey Repair Café
2025

**FIXING
YOUR STUFF
SINCE 2018...**

Bring your clothing/textiles, electrical appliances, computers, bicycles, sharpening & household items

14 Dec 2024, 11 Jan, 8 Feb, 8 Mar, 12 April, 10 May, 14 June, 12 July, 9 Aug, 13 Sept, 11 Oct, 8 Nov, 13 Dec
10am-1pm St Peter's Church, Chailey Green, BN8 4DA

Enjoy a cuppa and some cake!!!

chaileyrc@gmail.com

Find us on: **facebook.**

Shades Of Sussex

High Spec female Painter & Decorator

Competitive Quotes
References Provided
Fully Insured
07874 603503

Keystroke Associates

Est. 1994

Specialists in
COMPUTER 'HOW TO' & SUPPORT - MID SUSSEX

07752 684733

jan@keystrokeassociates.co.uk
www.keystrokeassociates.co.uk

- Internet, WiFi & Email Issues
- Online Safety & Security
- NHS Online, Online Shopping & Bookings Safely
- Facebook, Instagram, WhatsApp

- Word Processing
- Spreadsheets
- Label Mail Merge for Xmas Cards
- Scanning & Printing
- File & Folder Management

- PC Healthcheck - Windows 11
- Purchasing/Installing New Devices
- Troubleshooting & Virus Removal
- Backup, Upgrades

PC • LAPTOPS • SMARTPHONES • TABLETS
DIGITAL CAMERAS • KINDLE



One to one
tutorials In
your own home,
on your own
devices

Be prepared
don't let the
scammers,
scam
You.



YOGA CLASSES with Andrew

Mixed classes for all levels in Plumpton Green



Contact 07932635778 for more details.

Lucy Locksmith

24hr Callout
No Callout Charge



199 Leader

Rapid Response
No VAT

Police checked

Free Estimates

Discount for Senior Citizens

Have you just moved?

Who else has a set of your keys?

For peace of mind do you need your locks changed?

Do your locks comply with your home insurance?

Friendly female staff

Lock outs, Break ins, all makes of locks

07780 840462

"Store this number on your phone,
you never know when you will need it"



PAINTER & DECORATOR

Interior/Exterior
Fully Insured - Reliable

for a free estimate please call

Steve Dartnell

07707806920
stevedartnell84@gmail.com



Woodstock Construction

Kitchens Bathrooms
General Building

We specialise in Kitchen & Bathroom
refurbishment.

Liaising closely with our Clients to
obtain the best possible results.

Over 35 years experience.

Call David for a free survey or further
information.

Mobile: 07961123054
Email: Woodstockcons@gmail.com



Plumpton & East Chiltington Wildlife

WHERE HAVE ALL THE BUTTERFLIES GONE?

We are a nation of people who like to talk about the weather. And we had plenty to talk about in 2024, didn't we? We endured a cool, overcast and wet Spring that seemed to go on forever; then when we blinked we realised Summer had been and gone. We had high hopes of perhaps an Indian Summer – but we were disappointed with that as well – I had to get my gloves out in September, and October and November were dull, dull, dull. And when it did rain in the South East it was very heavy – fortunately not as bad as many areas in Europe experienced in 2024.

And have you noticed that when the sun does come out it seems to be hotter and more intense than a few years ago and when it rains it is often torrential. This could be a consequence of our changing climate which we are told has increased the frequency of extreme weather events – scientists report that for every 1C increase in global temperatures, there will be 7% more moisture in the atmosphere – hence more rain.

What has this got to do with butterflies you ask? Well in 2024, they were affected by the weather too. The few warm days in March encouraged the hibernating butterflies out but the sunshine was short-lived. The usual early species like Orange Tips and Holly Blues emerged late and in low numbers. And then we got to the Big Butterfly Count 2024, which is the biggest citizen science survey of its kind in the world. Participants in the Count spotted an average of just seven butterflies per 15-minute count, a reduction of almost 50% on the average for 2023 of twelve – and it was the lowest count in the 14-year history of the Big Butterfly Count. It was the worst summer in the count's history for Common Blue, Holly Blue, Green-veined White, Small White, Small Tortoiseshell and Painted Lady.

Butterfly Conservation has declared a nationwide Butterfly Emergency. They say *"Butterflies are a key indicator species, when they are in trouble, we know the wider environment is in trouble too. Nature is sounding an alarm bell"*.

But surely, those of us living in Plumpton & East Chiltington are not going to accept this as a fait accompli. There is some helpful and hopeful news out there. The same organisation, **Butterfly Conservation, suggests that by making some simple changes to our gardening practices we can boost butterfly numbers by 93%.** Now that's surely worth thinking about, surely?

Some suggestions of plants to look out for when you go to the garden centre or nursery next Spring and Summer – try Verbena Bonariensis, Ox-eye Daisies, Marjoram (a very useful herb for cooking too!), Yarrow (or Achillea) and Buddleia. There are many different varieties and colours of Yarrow and Buddleia – you will be spoilt for choice.

And if you have room for a small wild area (can be as small as 2sq ft) these plants have flowers that attract butterflies: Field Scabious, Hemp Agrimony, Bird's Foot Trefoil, Greater Knapweed, Betony, Dame's Violet, Common Fleabane, Meadow Vetchling and Red Campion.

Plumpton & East Chiltington Wildlife Group has declared 2025 THE YEAR OF THE BUTTERFLY – would you like to help improve the landscape for butterflies?

If you want to learn more about garden planting or wildflower planting for butterflies do ask – we are here to help – contact us on plumptonwildlife@gmail.com.

Carole Nicholson PECWG

C. LEWRY GROUNDWORKS

- DRIVEWAYS, PATIOS & PATHS
- FENCING
- FOOTINGS & CONCRETE BASES
- DRAINAGE
- TURFING / LANDSCAPING
- DIGGERS + OPERATOR HIRE

Over 25 years experience + based in
Plumpton Green

FULLY INSURED

Contact Chris for a free quote

07854 787 545

chrislewry1980@yahoo.com

CHARLES WYCHERLEY

INDEPENDENT ESTATE AGENTS

56 High Street, Lewes
01273 069006 or 07912 935889
Email: office@charleswycherley.co.uk
Living locally in the East Chiltington/Plumpton
area.

Competitive rates for locals
Estate Agent and Chartered Surveyor



Ladybirds Playgroup



Come and join in the fun on Wednesdays!



Babies, toddlers and pre-school children all welcome at
this community run playgroup.
A lovely way to meet local people in a relaxed, friendly
atmosphere.

Plumpton Village Hall

Wednesdays (Term Time) 9.30 to 11.30am
£2.50 per family (first session is free)
ladybirdsplumpton@gmail.com

Angelo Spadaccini

Oil fired boiler and Aga service engineer

01403 741600

Fully experienced and insured

Info : www.facebook.com/angeloilfired



LEE'S LOCKS

NO CALL OUT CHARGE!

All locks fitted to insurance BS3621

Window Locks • Supplied & Fitted
Fully Guaranteed • O.A.P. Discounts
Insurance Work • UPVC Specialist
Digital Locks • Break ins
Garage Door • UPVC/Patio
Police Checked • No VAT!!!



**LOCKED OUT? DOOR JAMMED?
LOST KEYS? NEED EXTRA SECURITY?**

*Store this number in your
phone NOW! You may need it*

Tel: 01273 803 084

Mob: 07921 068564

Email: lee@lees-locks.com

FREE
PHONE **0800 44 88 147** Always



Checktrade
Before you use them



ELECTRICIAN

DEAN FERGUSON
YOUR LOCAL CHAILEY BASED

OVER 30 YEARS EXPERIENCE

Registered with NAPIT to certify to part P

No job too big, no job too small (labour VAT Free)

Tel: 01825 723661

MOB: 07754000147

Email: deanfergusonelectrician@hotmail.co.uk



ATKINSON PLUMBING & HEATING Ltd



07973 550114

01825 791232

- Kitchens & bathrooms
- General refurbishment
- Carpentry service available
- Woodburners
- Boiler installation / servicing
- Central Heating

We cover West Sussex & surrounding areas

Our customers have rated us 10 for Workmanship and Courtesy on

Checkatrade.com
Where reputation matters

PAY LESS TAX

Formerly with the world's largest accountancy firm for many years, I am now available freelance, to deal with all tax/accountancy matters, at a fraction of company rates. Ring for a free meeting.

LAWRENCE FLOWERS

School House
Plumpton Green, Lewes BN7 3DP
Tel: 01273 891505
Email lawrie8f@gmail.com



CLAPTAPSPORT

Book Here

Feeling Tired and Sluggish?



NEW FITNESS CLASSES

Experienced Trainers providing group exercises for all abilities

Only £5 a session

Monday Nights 8-9pm Plumpton Green Village Hall

Starting 08/07/24

www.clapptapsport.co.uk

07510 159914



Community-run preschool in the heart of Plumpton Green

Flexible hours available between
8.30-5pm Monday-Wednesday
8.30-3.30pm Thursday & Friday
Ofsted rated **OUTSTANDING**.

The Pavilion, Plumpton Green
hello@honeybeespreschool.co.uk
www.honeybeespreschool.co.uk

07786615686

Advertise Here !!

Contact
pecntreasurer@gmail.com

Or

Phone
01273 891427



simon cooper

scoopsweb

web solutions

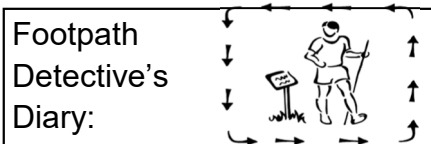
Plumpton-based web designer

tel: 07870 570050

email: simon@scoopsweb.co.uk

web: www.scoopsweb.co.uk

For all your website and digital marketing needs



A Footpath Detective's Diary **January 2025** **Southeast and the South Downs**

A new year, 2025, let us hope it's a good one. At the time of writing in early December we have just had another wet and very windy weekend making a lot of our local paths very muddy so I look to downland options. A starting point I often use is Southeast station, and hopefully this will suit those that choose to use public transport. A look at the O/S map shows that there are many great options, some circular and many linear and on this occasion I chose a circular route to incorporate some flat riverside path and some fine downland.

I had parked near the YHA just to the east of the station so to start I went west and over the railway to the River Ouse turning south to follow the east bank path, this can be a little muddy in a few patches. The path is on the raised bank beside the river and was quite walkable. As I progressed downstream I was afforded a lovely view of the village of Piddinghoe. The church is dedicated to St John and it is one of three churches along the Sussex Ouse to have a round tower on top of which its weather vane is shaped as a large fish, possibly a river trout.

Continuing south and shortly before North Quay (Newhaven) the path heads east across a field to the railway line. This was the tricky bit and I'm never sure if I got this bit quite right. Somewhere the path crosses the railway. I thought I'd found the right place, the signs indicated it was a crossing but the gate takes a little looking to find. Some smart navigation of the industrial units led me quickly to the footpath signs and onward up through Denton to join the bridleway that heads eventually to Bo Peep Bostal, and that is one option but not the one I had chosen as after crossing a couple of other bridleways I found another bridleway that heads north in a little valley called Stump Bottom then climbs

to Blackcap Hill (not our own Blackcap of course) and upward to the top of Firle Bostal. From here spectacular views can be appreciated in all directions.

The east / west route at this point is the South Downs Way (SDW) and for those who like refreshment on their journeys I suggest its worth a picnic from one of the vantage points if the weather is suitable. I headed west to Beddingham Hill and return over Itford Hill and descend to Itford Farm via the footbridge that crosses the A26. It was constructed nearly 20 years ago to provide easy crossing of the busy road for horses, bikes and those on foot.

As is typical on the South Downs along the SDW on the stretch between Beddingham Hill and Itford Hill I spotted two dewponds, these are small clay lined ponds in which rainwater collects to provide water for livestock. What puzzled me was that, by reference to the map, I saw that one is called White Lion Pond and the other Red Lion Pond - now why would that be? My old mentor Edgar's inspired guess was that the presence of red and white lions suggests some heraldic significance, and in this part of Sussex this might point to the mediaeval owners of Firle Place, the Gage family. The White Lion is supposed to refer to Edward IV but the Red Lion is more usually associated with Henry VIII. If this explanation is correct it suggests that the Gages changed sides in the wars between York and Lancaster. Sir John Gage was in charge of The Tower of London when Jane Grey and the young Princess Elizabeth were prisoners there. So this is a suggestion rather than a solution.

Refreshments are often available in the YHA tea room which welcomes walkers and cyclists.

I know that some readers like to have an idea of how long this route is, well I didn't measure it but would estimate about 6.5 miles with a hill.

EJH



Bird Watch

At the start of a new year, we all make resolutions that we know we won't keep. One however, that is not difficult, is to make a list of birds or indeed any wildlife we see. The lists that it is possible to make are numerous. The obvious one is to keep a list of all species seen – "a Life List". The longer that list becomes, the more difficult it is to add to it, as those not yet recorded become fewer. I am not attempting to turn us all into "twitchers" but this will surely improve identifying skills.

A "Year List" is a good one and comparisons from year to year give a good indication of how various species are faring or how many interesting places you may have visited annually. Probably, the easiest one to make is a "Garden List", logging any birds you see in your garden or overflying the airspace. I can assure you of one thing, that something you never expected to see will turn up. This obviously depends upon where your garden is situated, its size, the vegetation there and how often and the variety of food offered. There is a valued survey of garden birds with observers sending monthly totals to the BTO from which population trends can be assessed. There is of course, the annual Big Garden Bird Watch held in January in which all are welcome to partake.

For those unable to get out, the television offers a great opportunity for armchair birdwatching. Of course, the Natural History programmes are fantastic and show us close-ups of birds and other animals we would otherwise not see, but I know of people who

recognise birds during all sort of different programmes. Outside sports give a good opportunity. When golf is shown, played over vast areas with varying habitats and often near the sea, incidental wildlife is there. Various different lengths of grass and often Gorse bushes, provide for a wide selection. There are the inevitable gull flocks. Even these can appear interesting on the box when sorting the different species! Sometimes, the camera operator has a similar interest, and from on high, shows a Hare in the long grass, butterflies, wading birds on the shore or a Kestrel hovering. At such times, the pause button is useful.

Horse racing is another very good chance to log interesting birds. With so much grass, many species are attracted there. I have quite often seen a Pheasant strolling across the track. Particularly when racing comes from the North or from Scotland, I have identified Oystercatchers and Curlews probing the turf. As the horses came around the bend the other day, they disturbed a flock of several dozen Starlings that flew up and after the field had passed, settled back down to resume feeding. Programmes from abroad are also good for this. While watching the cricket from India, Black Kites are always in attendance. When the lights came on for the evening session, large numbers of moths were attracted to the brightness and some large bats turned up to prey upon them.

R.J.L.

A. C. TAX SERVICES

ACCOUNTANCY
& TAXATION SERVICES
Kelvin Speirs

Fyndings, Station Road
Plumpton Green
Lewes BN7 3BX Tel: 01273 890785
Email: kelvinspeirs60@gmail.com

Est. 1993
KINGS FRAMERS

Unit 55, The Old Brickworks, Plumpton, BN7 3DF

- * Bespoke Framing
- * Interior Consultancy
- * Picture Hanging
- * Framed Artwork & Mirrors

Contact us to make your appointment

01273 481020

info@kingsframers.com

www.kingsframers.com



Pet Photographer

Bea Bowen - BA Photography

Keep the memory of your little friends forever

Animal lover ● Friendly ● Professional

Contact me for more information

07856363603

Beabowenphotography

beabowen14@gmail.com



Therapeutic Yoga - 1:1 tuition

20+ years experience

Movement and Stillness for body and mind for people living with

Learning and Physical Differences

Neurological Conditions

Dementia

Frailty

For more details contact Amber

07795 170803 / ambertheward@hotmail.com



Traditional & Power Sweeping
Tel. 01273 858568 Mob.07889 485832
Fully insured Friendly & Reliable



Beautifully made curtains, Roman blinds, cushions & soft furnishings. Alterations & repairs to existing curtains & soft furnishings.

All carried out by a fully trained professional curtain maker.

Call/WhatsApp
07711995385 or email
judith@sewjudith.co.uk

A.M Appliances

- Washing Machine Repairs
- Dishwasher Repairs
- Electric Cooker Repairs
- Tumble Dryer Repairs
- Spare Parts



Domestic Appliance Repairs

Allan Mansfield

01273 890917

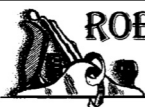
www.amappliances.co.uk

01444 391112

service@amappliances.co.uk

www.checkatrade.com

Find us on facebook



ROBERT BRADSHAW

CARPENTER / JOINER

25 YEARS EXPERIENCE

Newick

- Purpose-made Wardrobes
- Doors / Architraves
- Cupboards / Shelving
- Kitchens
- Property Maintenance

Mobile: 07811 224400

Email: robcbad@gmail.com

MPS Electrics

For all your electrical needs

Local Electrician
Fully qualified/insured

Contact Marcus on

Tel: 01273 525545

Mob: 07546505447

email: mpselectrics@gmail.com



Proud members of

Checkatrade.com
Where reputation matters

COME AND JOIN US
AT YOUR LOCAL, FAMILY FRIENDLY
TENNIS CLUB

- LTA QUALIFIED COACHES
- ADULT/JUNIOR COACHING
SATURDAY SESSIONS FOR JUNIORS OF ALL AGES
- CLUB NIGHTS/RUSTY RACQUETS/TEAM PLAY
- CHILDRENS' EASTER & SUMMER CAMPS
- JOIN IN WITH OUR COACH RUN CARDIO
SESSIONS A GREAT WAY TO KEEP FIT
- AWARD WINNING CLUBHOUSE
- FLOODLIGHTS



WANT TO KNOW MORE?
CALL LESLEY SATCHELL ON: 07590 354420
OR EMAIL: info@plumptonc.org.uk

Advertise Here !!

Contact
pecntreasurer@btinternet.com

Or

Phone
01273 891427

Garden maintenance



Phillip 07812 364395

Professional, Experienced, Reliable



Chailey Commons Society

www.chaileycommons.org.uk

Winter has taken over and everything is now resting. The ponies on Red House Common continue to graze widely and as a result the lookers, on their daily visits, have various stories of how they are walking around and not seeing them, or only able to find a few.

Even though the January days are short, and it isn't very inspiring to get out and about, I'm reminded of a saying from years ago - "There is a low mist in the woods - It is a good day to study lichens." The great thing about lichen spotting is that it is open to all, and you need not venture far at all. Lichens can be found growing on bark, rocks, and walls and in woodlands. Such names as Starburst *Xanthoria* are easily seen as its bright orangey yellow and in a round shape. Greenshield lichen *Flavoparmelia* is a mass of grey green on trees. The Oak Moss *Evernia* is not a moss but a lichen and is frilly and shrubby often on twigs and branches. Next time you are out walking stop and look as they are amazing. Contrast as you look for the three groups – Crustose, Foliose and Fruticose.

Forthcoming Events in 2025

- **Thursday January 9th, 2025. Talk by Laura Vaughan-Hirsch the 'Stork Officer' at Knepp Castle on the - 'Storks at Knepp'. Chailey Village Hall 7.30pm. Parking and refreshments; visitors welcome.**

- **Sunday January 12th and Saturday January 25th Birch Harvesting on Red House Common for besom brooms: 9.30 am - 1pm with snack break. Further details to follow.**

If you would like to take part in the birch cutting, please contact us using the email (mail@chaileycommons.org.uk) in advance so that we can get you registered as a volunteer.

If you are interested in the local nature and wildlife and our activities, we always welcome new members so please come and join us. It's now easy to join online through our website.

I wish you a happy and peaceful New Year

For further information, visit our website – www.chaileycommons.org.uk or our Facebook page www.facebook.com/chaileycommons/ or friendsofmarkstakescommon.weebly.com

William Coleman

01444 831098



Lewes District Citizens Advice

15 – 19 Chapel Street
Newhaven
BN9 9PN
@Lewescab1

www.lewesdistrictca.org.uk

Contact : Sophie Hoffman 01273 007556

My kids love Christmas, picking extra treats and naming gift ideas. I want to make it special, but money is tight, and I'm worried about overspending and debt. How can I manage holiday finances responsibly, and where can I get support if I'm struggling to make ends meet?

Christmas can be a financially stressful time, and the temptation to borrow or use credit is high. However, there are steps you can take to manage spending and avoid debt.

First, create a budget. List who you're buying for, other seasonal expenses, and what you can truly afford. Keep receipts in case you overspend. Remember that bills may also be higher in winter due to heating and spending more time indoors.

If you're already in debt, don't ignore bills. Contact those you owe; they may accept lower payments. Focus on priority debts first, like rent, mortgage, council tax, and energy bills. For other debts like credit cards, gather your information, set a budget, and speak to creditors about affordable repayment options.

If your budget doesn't cover essentials, check the Citizens Advice website for cost of living support.

You may also qualify for the Winter Fuel Payment if you receive Pension Credit or other benefits; apply for Pension Credit by December 21 to be eligible.

Remember, support is available. Citizens Advice can help you understand your options and find a way forward.

Speak to a local adviser in Lewes District at 0808 278 7892, available Tuesday - Thursday, 10am-3pm.



EAST CHILTINGTON



Societies

Clubs

Groups

For changes or new entries:

phone:

01273 891427

Email:

pecncopy@gmail.com

Baby & Toddler Group	Charlotte	01273 891086
Beekeeping Group	Jim Thompson	07597 067535
British Legion	Reg Lanaway	890070
Brownies	girlguiding.org.uk	
Chailey Commons Society	William Coleman	01444 831923
Cricket Club	Kelvin Speirs	890785
Flower Club	Sue Akers	891701
Football Club	Paul Manville	07813 114470
Footpath Society	Judy Lawrenson	01273 472277
Guides	girlguiding.org.uk	
Happy Circle	Cherie Winchester	891592
Honeybees Preschool		07786 615686
Horticultural Society	Lin Pilfold	01273 475594
Hospice Support Group	Sue Akers	891701
Junior Football	Darryl Bailey	07792 686673
Oil Buying Group	Diane Marks	07929 336065
Pantomime Society	Penny Acton	01273 891427
Plumpton Activity Scheme	Becca Baker	
	plumptonactivityscheme@gmail.com	
Plumpton Bowmen	Mark Piercy	07799 467997
Plumpton Camera Club	Tim Honess	01273 890582
Plumpton & East Chiltington		07478 524152
Good Neighbours	Gina Hawthorne	
Plumpton Rude Mechanical	Lee Stevens	07887 562721
Theatre Co. Friends		
Plumpton Short Mat Bowls	Malcolm Beard	890826
Plumpton Tennis Club	Lesley Satchell	07590 354420
Plumpton Village Society	Lee Stevens	07887 562721
PPTFA	Marie Leviston	891497
Plumpton Vol Driving	Gill Medhurst	01273 890055
	Bookings - Jackie	07855213947
Rainbows	girlguiding.org.uk	
Rugby Club	Mike Allen	890076
Scouts	Rodney Hills	890410
Southdown East Pony Club	Mike Nichols	01444 452295
Stoolball Club	Jo Taylor	890450
Turning Pointe Dance Classes	office.turningpointe@gmail.com	
Wildlife Group	Jean Stewart	

Plumpton & East Chiltington News

Advertising & Admin: Mac Gardiner 01273 891383

Email: pecntreasurer@gmail.com

Typesetting:

Penny Acton

Email: pecncopy@gmail.com 01273 891 427

Distributed by:

Christine Millum 01273 890854

Printed By;

Devon Print Ltd. 077955 66066

Plumpton & East Chiltington News

**If you have a business providing services
in the Plumpton and East Chiltington
area and would like to advertise in this
magazine please email:**

pecntreasurer@gmail.com



EAST CHILTINGTON

